

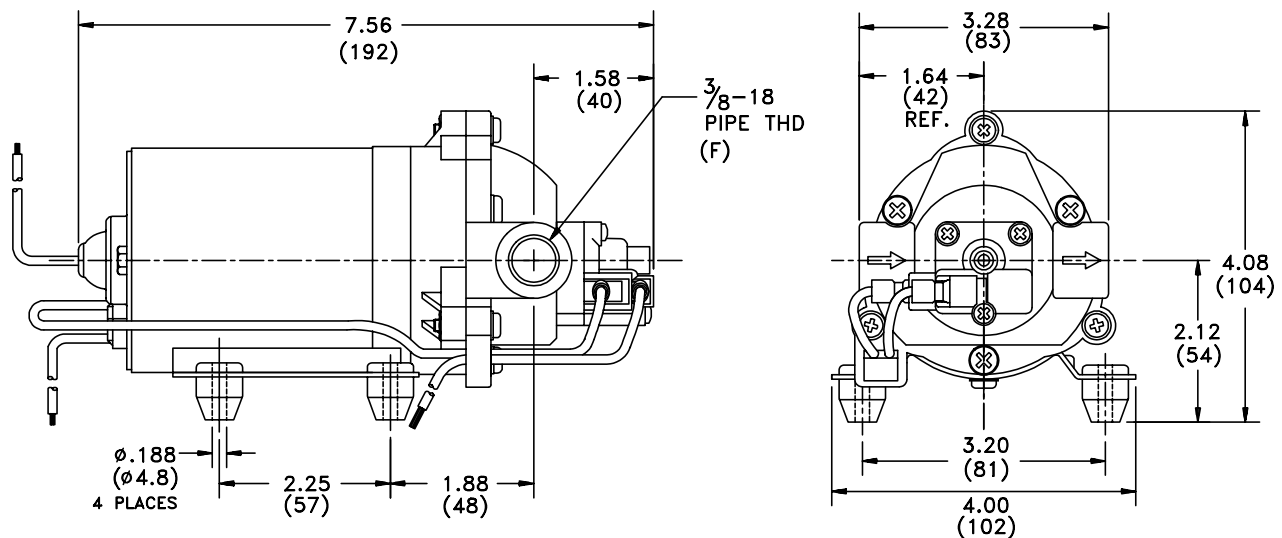
SPECIFICATIONS:**MODEL NUMBER:** 8010-252-236**PUMP DESIGN:** Positive Displacement 3 Chamber Diaphragm Pump**CHECK VALVE:** (1-Way Operation) Prevents Reverse Flow**CAM:** 2.5 Degree**MOTOR:** Permanent Magnet, P/N 11-142-20, Thermally Protected**VOLTAGE:** 24 VAC Nominal**PRESSURE SWITCH:** Adjustable Shut-Off (Range 40-60 PSI)Factory Set @ 60 PSI, Turn On 45 PSI \pm 5 PSI**LIQUID TEMPERATURE:** 170 Degrees Fahrenheit (77 Degrees Centigrade) Max.**PRIME:** Self-Priming Up To 7.0 Ft. Vertical,
Max. Inlet Pressure 30 PSI (2.1 Bar)**PORTS:** 3/8"-18 NPT Female**MATERIAL OF CONSTRUCTION:**

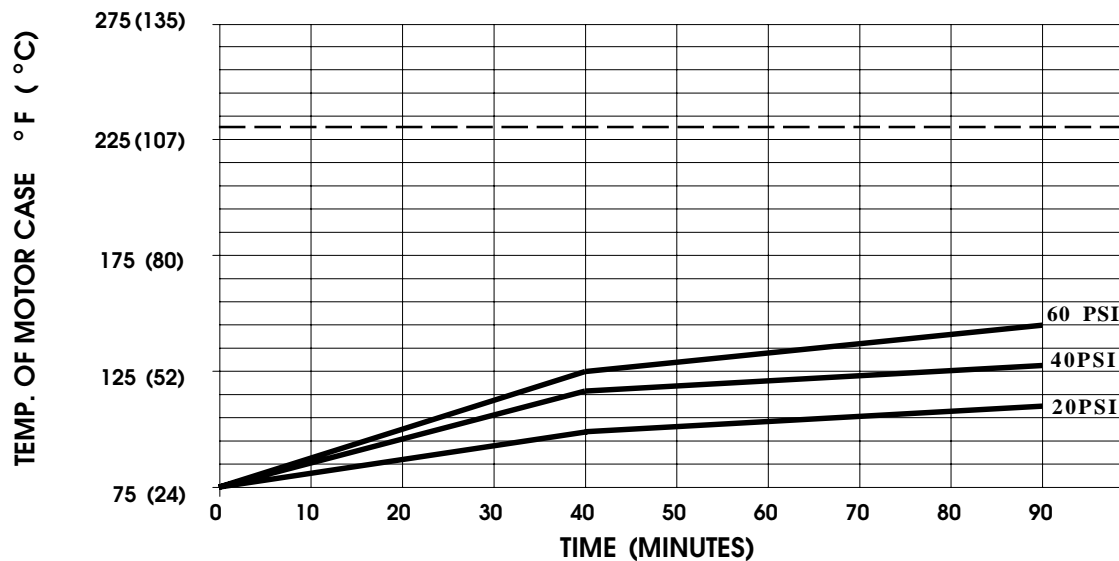
PLASTICS- Polypropylene

VALVES- EPDM

DIAPHRAGM- Santoprene

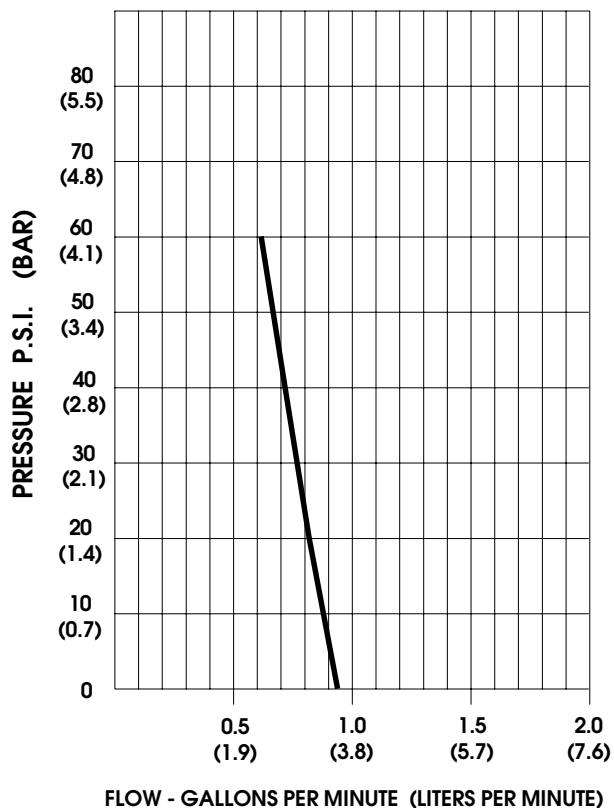
FASTENERS- Stainless Steel

NET WEIGHT: 3.8 Lbs (1.72 Kg)**DUTY CYCLE:** Intermittent (See Temperature Rise Chart)**APPROVALS:** NSF Listed**TYPICAL APPLICATIONS:** Booster Pump, Water Delivery**DIMENSIONS:**

TEMPERATURE RISE

THIS GRAPH IS FOR USE AS A DESIGN GUIDE. IT IS BASED ON RUNNING CONTINUOUSLY WITH AN AMBIENT TEMPERATURE OF 75 °F IN STILL AIR. THE THERMAL BREAKER WILL OPEN WHEN THE CASE TEMPERATURE REACHES 230 °F.

[- - - - - TRIP POINT OF THERMAL PROTECTOR]

TYPICAL PERFORMANCE

PRESSURE (PSI)	FLOW (GPM/LIT)	RPM MIN/MAX	CURRENT (AMPS)	VOLTAGE (VOLTS)
OPEN	0.95/3.6	1555/1625	0.82	24VAC
10	0.87/3.3	1500/1570	0.99	"
20	0.82/3.1	1445/1515	1.21	"
30	0.75/2.8	1385/1460	1.43	"
40	0.72/2.7	1325/1420	1.62	"
50	0.66/2.5	1290/1375	1.81	"
60	0.62/2.3	1240/1330	1.98	"

-SPECIFICATIONS SUBJECT TO CHANGE WITHOUT NOTICE.

-ALL DATA BASED ON TESTING WITH WATER AT AMBIENT TEMPERATURE.

To order pumps or parts from this sheet, please call our Order Desk at 1-888-279-8384 or Fax : 941-827-9741.

For technical advice or service please take your pump into your local pump service center.

To ship your pump in for repair please call Phone : 1-888-279-8384 or Fax : 941-827-9741

For more information or pricing please go to the following links :

[Shurflo Pumps Home >>](#)
[Shurflo Pumps stock list >>](#)