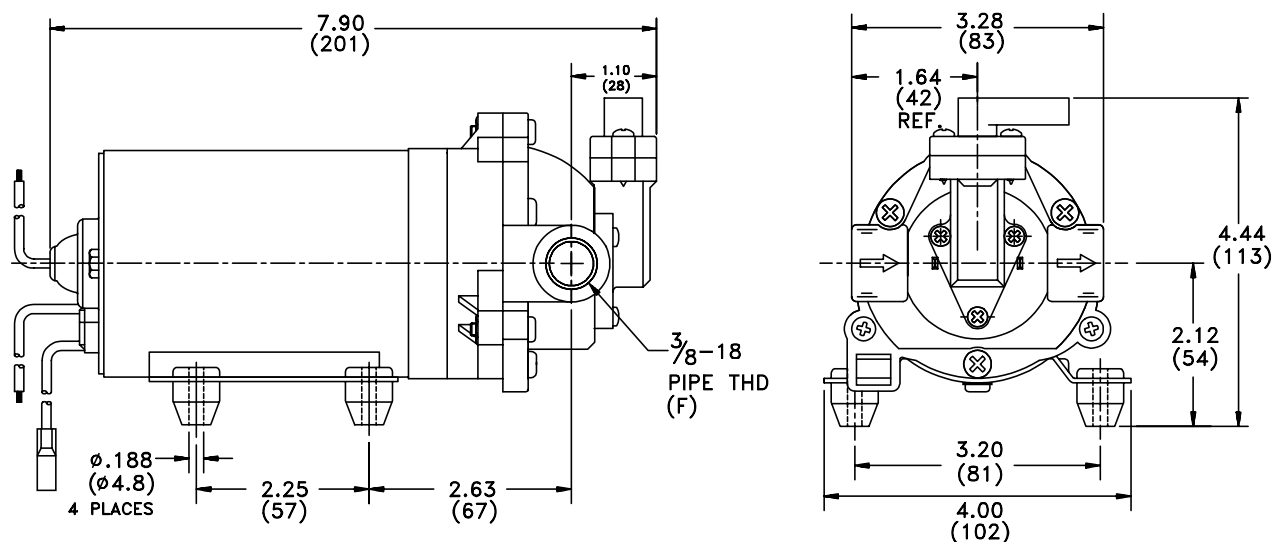
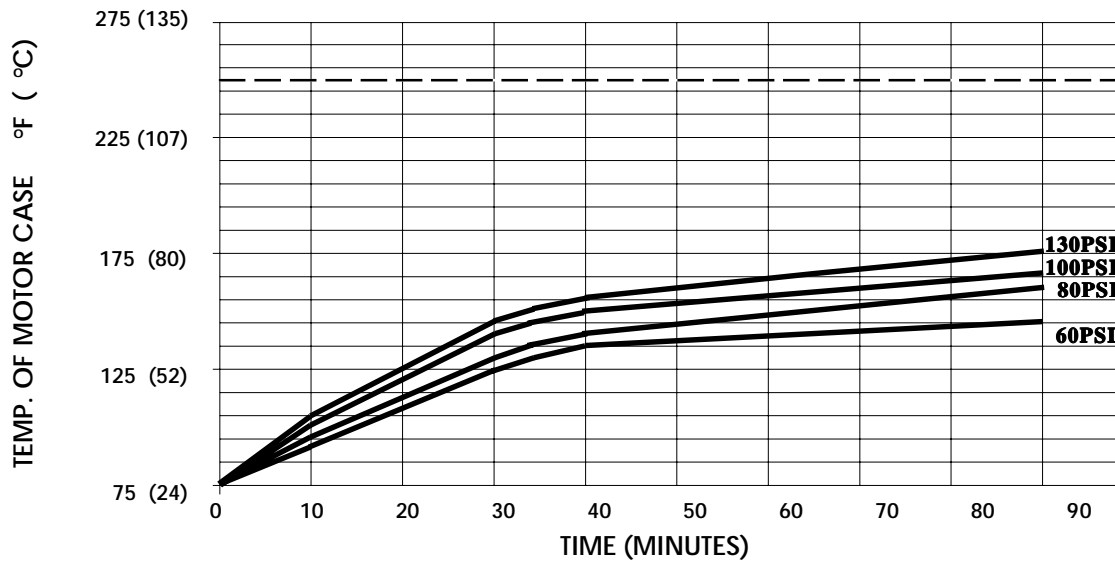


SPECIFICATIONS:**MODEL NUMBER:** 8000-802-639**PUMP DESIGN:** Positive Displacement 3 Chamber Diaphragm Pump**CAM:** 2.5 Degree**MOTOR:** Permanent Magnet, P/N 11-160-10, Thermally Protected**VOLTAGE:** 230 VAC Nominal**PRESSURE SWITCH:** Adjustable Bypass**LIQUID TEMPERATURE:** 180 Degrees Fahrenheit (82 Degrees Centigrade) Max.**PRIME:** Self-Priming Up To 12 Ft. Vertical,
Max. Inlet Pressure 30 PSI (2.1 Bar)**PORTS:** 3/8"-18 NPT Female**MATERIAL OF CONSTRUCTION:****PLASTICS-** Nylon**VALVES-** Viton**DIAPHRAGM-** Santoprene**FASTENERS-** Zinc Plated Steel**NET WEIGHT:** 4.7 Lbs (2.14 Kg)**DUTY CYCLE:** Intermittent (See Temperature Rise Chart)**TYPICAL APPLICATIONS:** Soil Extraction**BYPASS:** 140 PSI Max.**DIMENSIONS:**

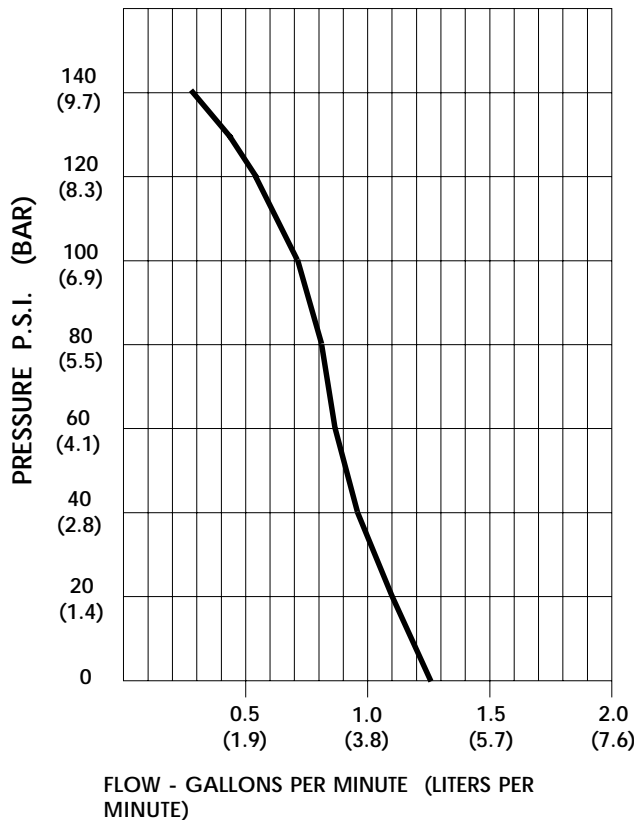
TEMPERATURE RISE



THIS GRAPH IS FOR USE AS A DESIGN GUIDE. IT IS BASED ON RUNNING CONTINUOUSLY WITH AN AMBIENT TEMPERATURE OF 75 °F IN STILL AIR. THE THERMAL BREAKER WILL OPEN WHEN THE CASE TEMPERATURE REACHES 120° C.

[----- TRIP POINT OF THERMAL PROTECTOR]

TYPICAL PERFORMANCE



| PRESSURE (PSI) | FLOW (GPM/LIT) | RPM MIN/MAX | CURRENT (AMPS) | VOLTAGE (VOLTS) |
|----------------|----------------|-------------|----------------|-----------------|
| OPEN | 1.27/4.8 | 2520/2580 | 0.20 | 230VAC |
| 10 | 1.22/4.6 | 2440/2510 | 0.23 | " |
| 20 | 1.11/4.2 | 2375/2435 | 0.24 | " |
| 30 | 1.00/3.8 | 2335/2365 | 0.26 | " |
| 40 | 0.95/3.6 | 2280/2300 | 0.29 | " |
| 50 | 0.92/3.5 | 2215/2250 | 0.31 | " |
| 60 | 0.88/3.3 | 2165/2195 | 0.32 | " |
| 70 | 0.84/3.2 | 2120/2140 | 0.34 | " |
| 80 | 0.81/3.1 | 2075/2100 | 0.36 | " |
| 100 | 0.72/2.7 | 1995/2005 | 0.40 | " |
| 120 | 0.54/2.0 | 1920/1930 | 0.43 | " |
| 140 | 0.29/1.1 | 1845/1850 | 0.46 | " |

For technical advice or service please take your pump into your local pump service center.

To order pump or parts or for pricing please go to the following links :

[Shurflo Pumps Home >>](#)

[Shurflo Pumps stock list >>](#)