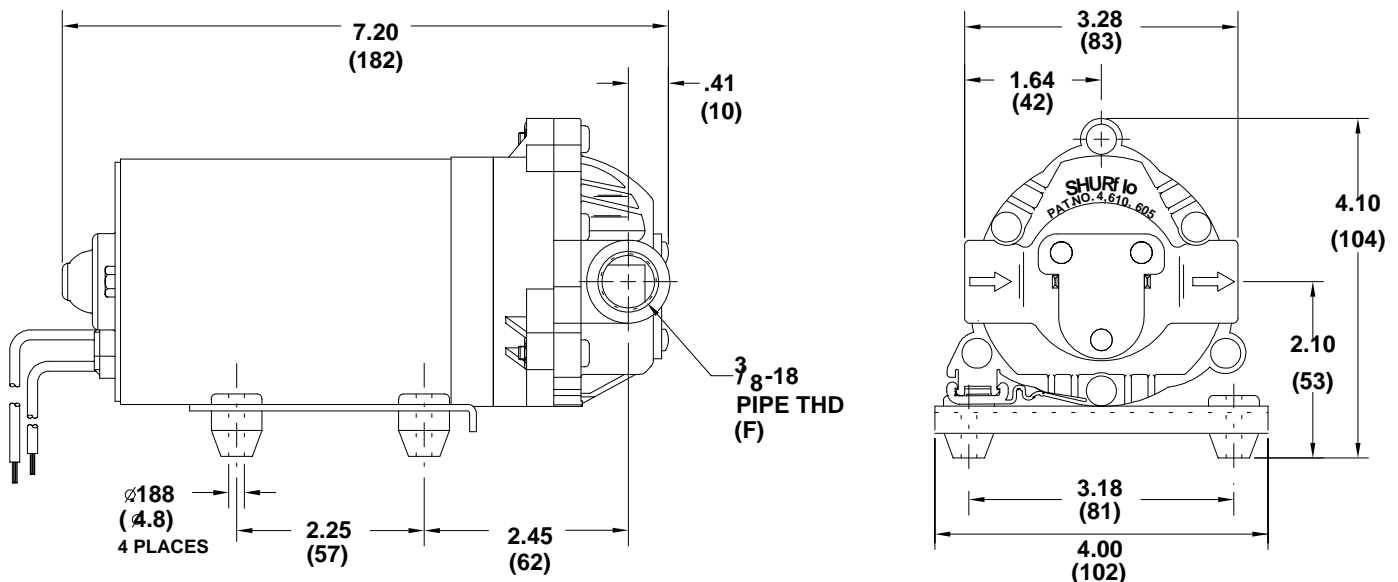
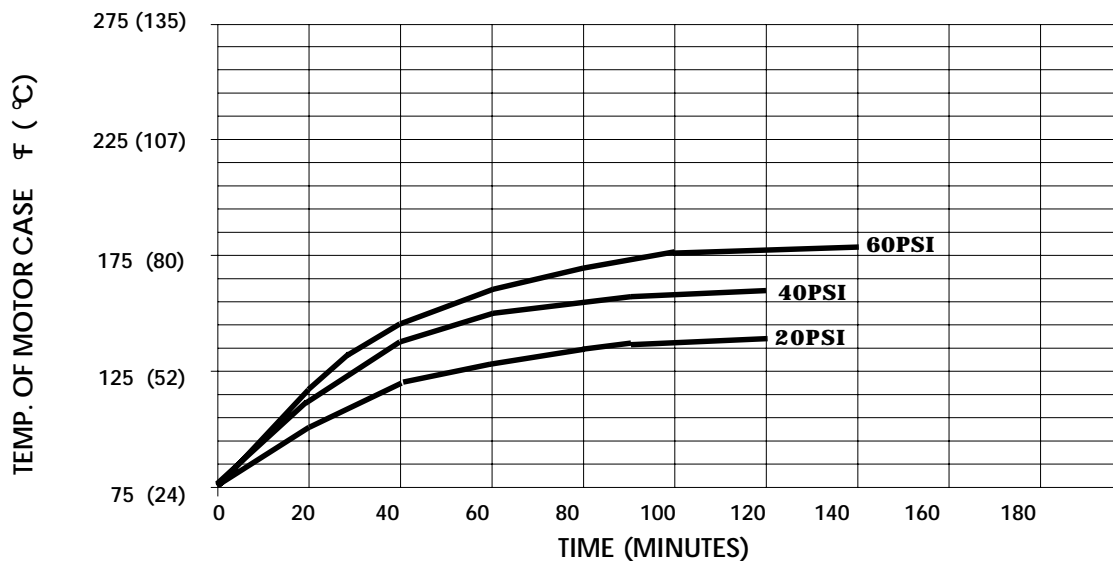


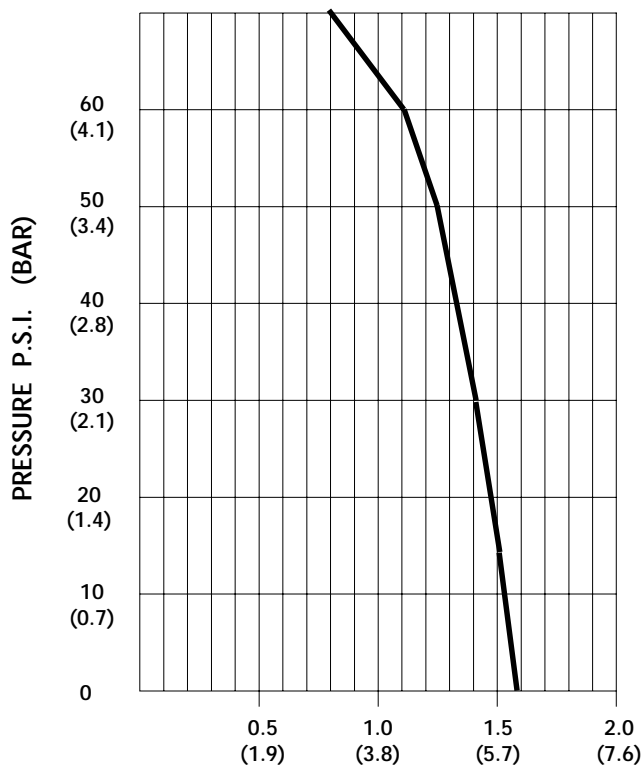
SPECIFICATIONS:**MODEL NUMBER:** 8000-543-220**PUMP DESIGN:** Positive Displacement 3 Chamber Diaphragm Pump**CAM:** 3.0 Degree**MOTOR:** Permanent Magnet, P/N 11-111-00**VOLTAGE:** 12 VDC Nominal**PRESSURE SWITCH:** None**LIQUID TEMPERATURE:** 170 Degrees Fahrenheit (77 Degrees Centigrade) Max.**PRIME:** Self-Priming Up To 11 Ft. Vertical,
Max. Inlet Pressure 30 PSI (2.1 Bar)**PORTS:** 3/8"-18 NPT Female**MATERIAL OF CONSTRUCTION:****PLASTICS-** Polypropylene**VALVES-** Viton**DIAPHRAGM-** Santoprene**FASTENERS-** Zinc Plated Steel**NET WEIGHT:** 4.5 Lbs (2.0 Kg)**DUTY CYCLE:** Continuous (See Temperature Rise Chart)**TYPICAL APPLICATIONS:** Soil Extraction, Water Delivery**BYPASS:** 60 PSI**DIMENSIONS:**

TEMPERATURE RISE



THIS GRAPH IS FOR USE AS A DESIGN GUIDE. IT IS BASED ON RUNNING CONTINUOUSLY WITH AN AMBIENT TEMPERATURE OF 75° F IN STILL AIR.

TYPICAL PERFORMANCE



PRESSURE (PSI)	FLOW (GPM/LIT)	RPM MIN/MAX	CURRENT (AMPS)	VOLTAGE (VOLTS)
OPEN	1.56/5.9	2210/2295	3.2	12VDC
10	1.52/5.7	2155/2255	3.8	"
20	1.45/5.5	2080/2185	4.5	"
30	1.39/5.3	2025/2120	5.2	"
40	1.33/5.0	1965/2065	5.8	"
50	1.25/4.7	1920/1965	6.5	"
60	1.12/4.2	1860/1935	7.1	"
70	0.80/3.0	1805/1890	7.7	"

FLOW - GALLONS PER MINUTE (LITERS PER MINUTE)

*-SPECIFICATIONS SUBJECT TO CHANGE WITHOUT NOTICE.
-ALL DATA BASED ON TESTING WITH WATER AT AMBIENT TEMPERATURE.*

To order pumps or parts from this sheet, please call our Order Desk at 1-888-279-8384 or Fax : 941-827-9741.

For technical advice or service please take your pump into your local pump service center.

To ship your pump in for repair please call Phone : 1-888-279-8384 or Fax : 941-827-9741

For more information or pricing please go to the following links :

[Shurflo Pumps Home >>](#)
[Shurflo Pumps stock list >>](#)