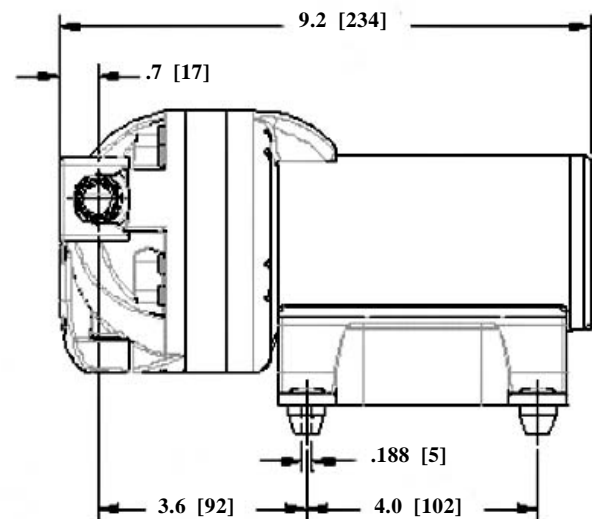
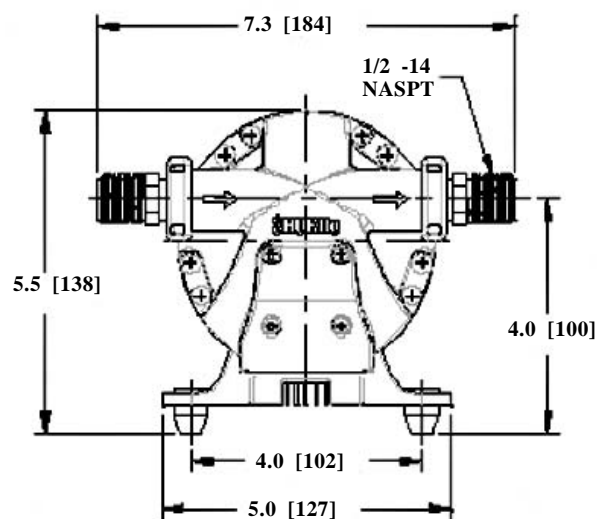
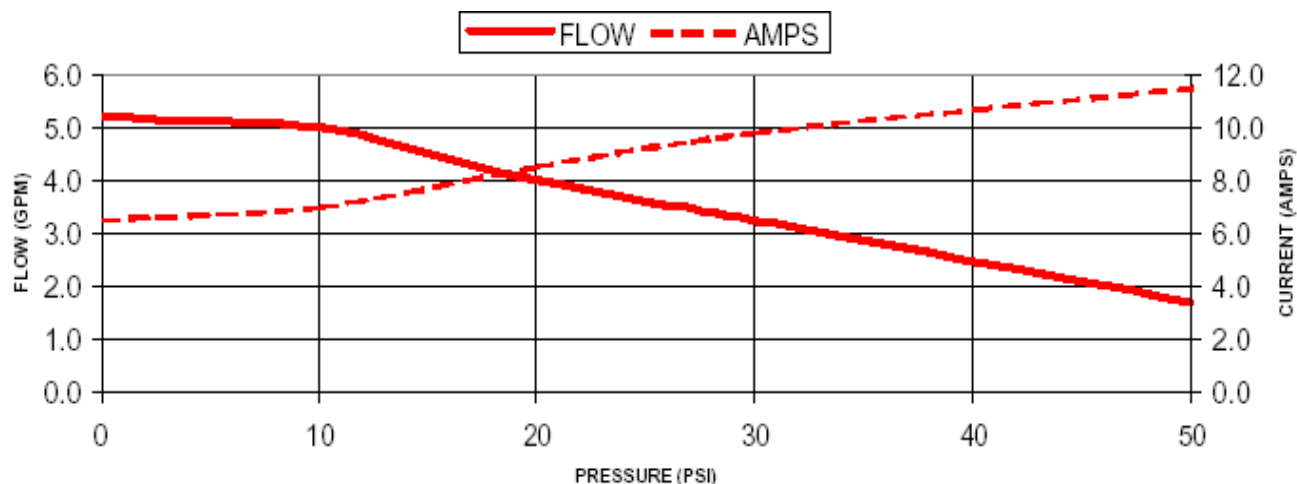


**PRODUCT DATA SHEET****MODEL: 5904-0201****SPECIFICATIONS:****MODEL NUMBER:** 5904-0201**PUMP DESIGN:** 5 Chamber Diaphragm**CAM:** 3.5**MOTOR:** Permanent Magnet, Intermittent Duty**MOTOR PROTECTION:** Thermal Overload, Automatic Restart**VOLTAGE:** 12VDC**SHUT-OFF:** Voltage Variant, Factory Set @ 60 PSI [3.1 Bar] ± 5 PSI [0.4 Bar]**LIQUID TEMPERATURE:** 130 F [54 C] Max**PRIME:** 6 Feet [2.7 M]**PORTS:** Quick Connect**MATERIAL OF CONSTRUCTION:****PLASTICS-** Nylon**VALVES-** EPDM**DIAPHRAGM-** Santoprene**FASTENERS-** Stainless Steel**NET WEIGHT:** 8.5 Lbs.**DUTY CYCLE:** Intermittent**TYPICAL APPLICATIONS:** Solar**DIMENSIONS:**

MODEL: 5904-0201



TYPICAL PERFORMANCE @ 12V DC

PRESSURE		FLOW		CURRENT
BAR	PSI	GPM	LPM	AMPS
0.0	0	5.20	19.7	6.50
0.7	10	5.00	19.0	7.00
1.4	20	4.00	15.0	8.50
2.1	30	3.25	12.3	9.80
3.5	50	1.70	6.40	11.5

For technical advice or service please take your pump into your local pump service center.

To order pump or parts or for pricing please go to the following links :

[Shurflo Pumps Home >>](#)

[Shurflo Pumps stock list >>](#)