

# ~~Extreme~~™ Series



## MARINE PRODUCT DATA SHEET

OEM: 4901-0201

AFTERMARKET: 4901-0211

The Smart Sensor 4.0 is designed specifically for cruisers and midsize yachts. Delivering 4.0 GPM and pressure up to 50 PSI, this micro-controller based variable speed pump precisely monitors your system's water pressure and adjusts the motor speed, eliminating the need for an accumulator tank.

### TYPICAL APPLICATIONS

Multi-fixture marine fresh water installations. Other uses may included 12V DC pressurized water systems in cabins. This pump may be used for general water transfer. For other applications, contact SHURflo.

### PUMP

Type: 4 Chamber Diaphragm  
 Ports: 1/2"-14 NPSM-Male.  
 Liquid: 130 °F [54 °C] Max  
 Prime: 6 feet [1.82 M]  
 Inlet PSI: 30 PSI [2.1 Bar] Max  
 Run Dry: Yes

### ELECTRICAL

Motor: 12VDC Permanent Magnet, Intermittent Duty  
 Protection: Thermal Overload, Automatic Restart  
 Leads: 14 AWG, 16" [40 cm] Red +, 13" [33 cm] Black -  
 Fuse: 15 Amp Recommended  
 Control: Shut-Off 50 PSI [3.4 Bar] ± 5 PSI [0.4 Bar]  
 Restart 30 PSI [2.0 Bar] ± 5 PSI [0.4 Bar]

### MATERIALS

Housing: Nylon  
 Valves: EPDM  
 Diaphragm: Santoprene  
 Hardware: Stainless Steel

### APPROVALS

Ignition Protected, CE, ISO 8846

### WARRANTY

3 Year Limited Warranty  
 See SB-1041 & SB-1050 For Full Warranty Details

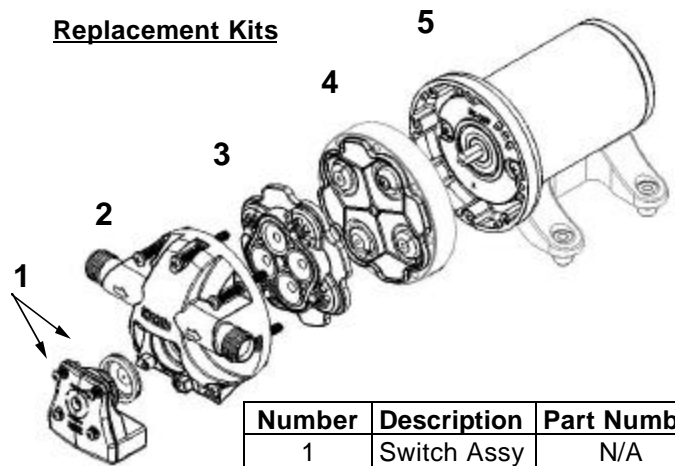
### SHIPPING

Net Weight (Boxed): Lb [Kg] each  
 Carton Weight: 6 each, 42 Lb [ 19 Kg]  
 Carton Size: 24"L x18 "W x6 "H  
 [61 cm x 46 cm x 15 cm]

### RELATED DOCUMENTS

Catalog: MS-030-140  
 Installation Manual: 911-713  
 Maintenance: 911-713  
 Applications Spec Guide: MS-020-005  
 Warranty: SB-1050

### Replacement Kits

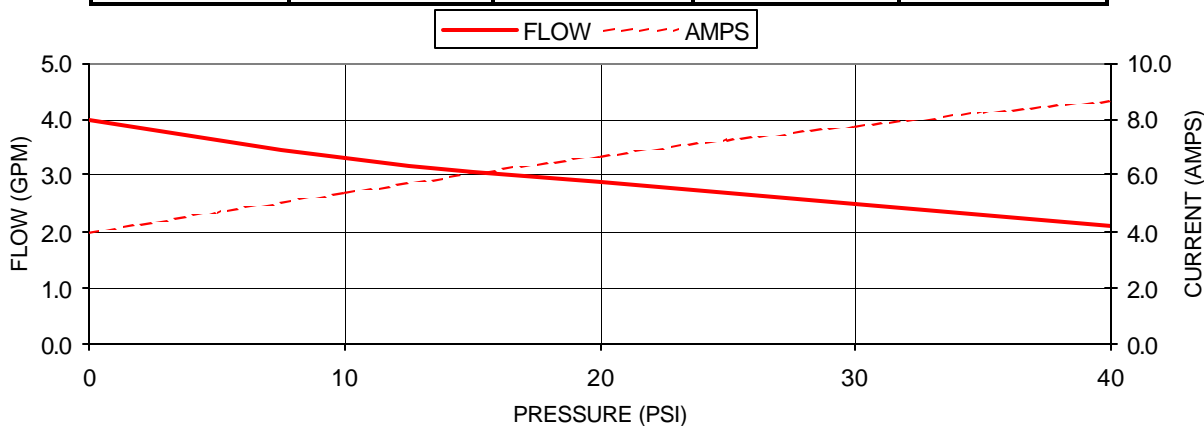


| Number | Description | Part Number |
|--------|-------------|-------------|
| 1      | Switch Assy | N/A         |
| 2      | Upper Hsg   | N/A         |
| 3      | Valve Assy  | 94-030-11   |
| 4      | Drive Assy  | 94-030-12   |
| 5      | Motor       | N/A         |

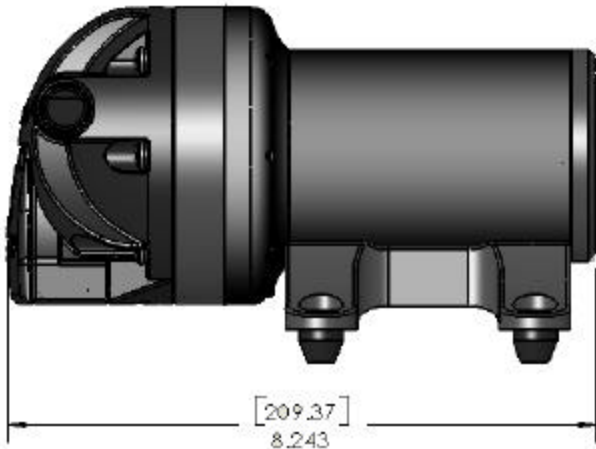
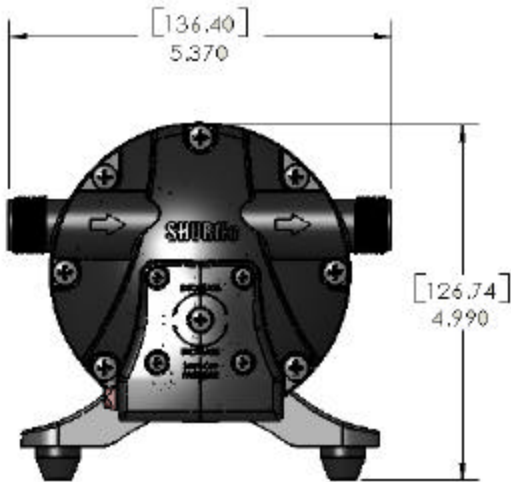


**PERFORMANCE @ 13.6V DC**

| PRESSURE |     | FLOW |      | CURRENT |
|----------|-----|------|------|---------|
| BAR      | PSI | GPM  | LPM  | AMPS    |
| 0.0      | 0   | 4.0  | 15.1 | 4.0     |
| 0.7      | 10  | 3.3  | 12.5 | 5.4     |
| 1.4      | 20  | 2.9  | 10.1 | 6.7     |
| 2.1      | 30  | 2.5  | 9.4  | 7.8     |
| 2.8      | 40  | 2.1  | 7.9  | 8.7     |



**DIMENSIONS [mm]**



---

For technical advice or service please take your pump into your local pump service center.

To order pump or parts or for pricing please go to the following links :

[Shurflo Pumps Home >>](#)

[Shurflo Pumps stock list >>](#)