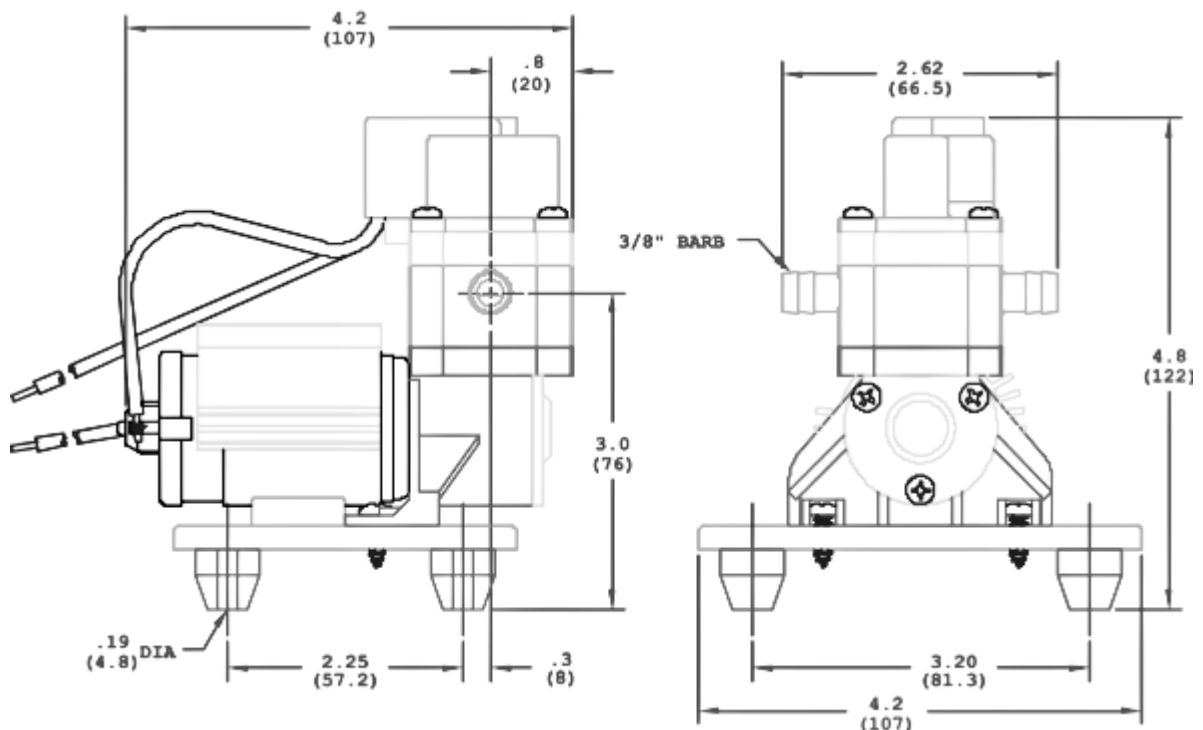
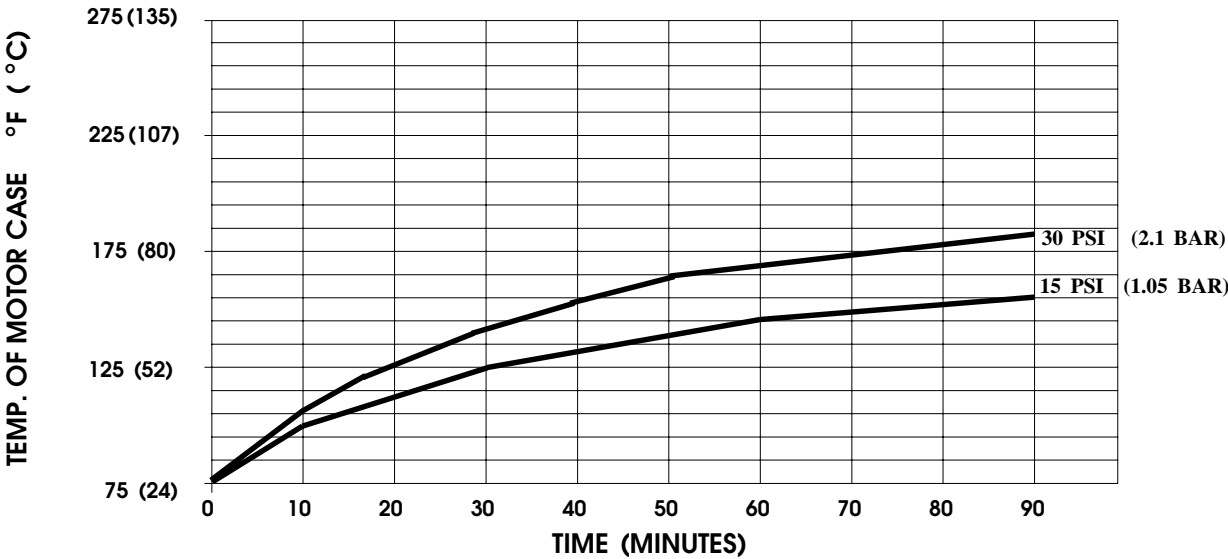


**PRODUCT DATA SHEET****MODEL: 402-140-033****SPECIFICATIONS:****MODEL NUMBER:** 402-140-033**PUMP DESIGN:** Positive Displacement**MOTOR:** Permanent Magnet, P/N 11-144-07**VOLTAGE:** 12VDC Nominal**PRESSURE SWITCH:** Factory Set @ 30 PSI (2.1 Bar)**LIQUID TEMPERATURE:** 130 Degrees Fahrenheit (54 Degrees Centigrade) Max.**PRIME:** Self-Priming Up To 4 Ft. Vertical,  
Max. Inlet Pressure 30 PSI (2.1 Bar)**PORTS:** 3/8" Barb**MATERIAL OF CONSTRUCTION:****PLASTICS-** Nylon**ELASTOMERS-** Santoprene Diaphragm/Viton Valves**FASTENERS-** Zinc Plated Steel**NET WEIGHT:** 0.9 Lbs (0.41 Kg)**DUTY CYCLE:** Intermittent (See Temperature Rise Chart)**TYPICAL APPLICATIONS:** Potable Water**DIMENSIONS:**

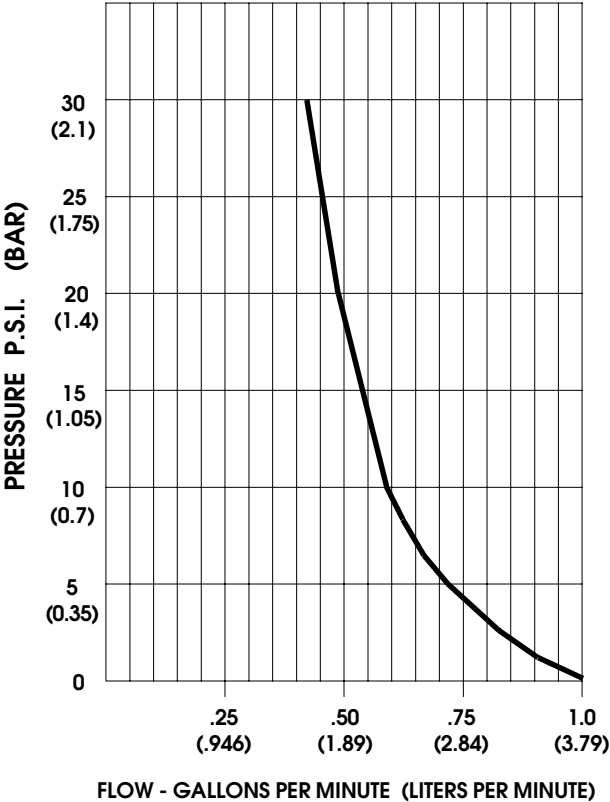
MODEL: 402-140-033

TEMPERATURE RISE



THIS GRAPH IS FOR USE AS A DESIGN GUIDE. IT IS BASED ON RUNNING CONTINUOUSLY WITH AN AMBIENT TEMPERATURE OF 75° F (24° C) IN STILL AIR.

TYPICAL PERFORMANCE



PRESSURE (PSI/BAR)	FLOW (GPM/LIT)	RPM MIN/MAX	CURRENT (AMPS)	VOLTAGE (VOLTS)
OPEN	1.00/3.8	4415/4460	1.0	12VDC
2/0.14	0.90/3.4	4315/4350	1.2	"
10/0.70	0.58/2.2	4195/4255	1.5	"
20/1.4	0.48/1.8	4065/4110	1.7	"
30/2.1	0.43/1.6	3995/4038	1.9	"

---

For technical advice or service please take your pump into your local pump service center.

To order pump or parts or for pricing please go to the following links :

[Shurflo Pumps Home >>](#)

[Shurflo Pumps stock list >>](#)