

## PRODUCT DATA SHEET

**MODEL: 3000-350**

## SPECIFICATIONS:

**MODEL NUMBER:** 3000-350

**PUMP DESIGN:** Flexible Impeller Pump With 3-Way Switch & 8 Ft. [2.4 M] Cable With Battery Clips

**REVERSIBLE FLOW:** Yes

**VOLTAGE:** 12 VDC Nominal

**MOTOR:** Permanent Magnet, Thermally Protected

**OPERATING PRESSURE:** 15 PSI (1.0 Bars) Max.

**LIQUID TEMPERATURE:** 40 °F to 185 °F Max. [4 °C to 85 °C]

**PRIMING:** Self-Priming Up to 7.5 FT [2.3 M] Vertical Prime,  
25 FT [7.6 M] Horizontal Prime (With Water)

**PORTS:** 3/4" Garden Hose Thread (O.D.), 3/8" NPT (I.D.)

**MATERIAL OF CONSTRUCTION:**

## PLASTICS- Glass Filled Polyester

## IMPELLER- Buna-n

**LIP SEAL-** Buna-n

## FASTENERS- Stainless Steel

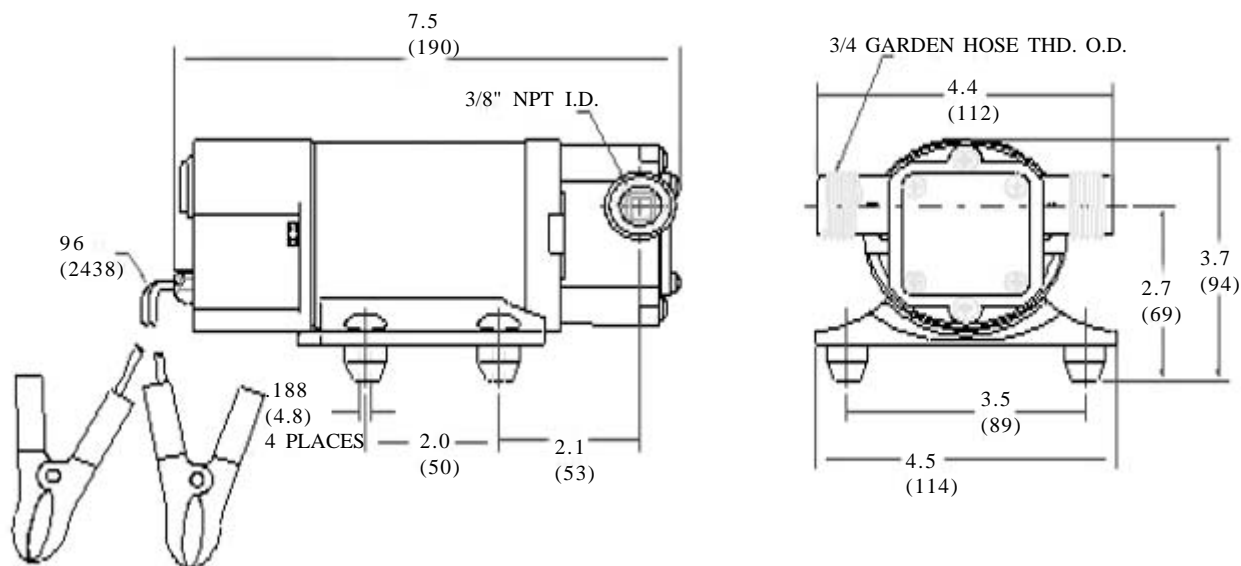
**NET WEIGHT:** 3.8 Lbs (1.7 Kg)

**DUTY CYCLE:** Intermittent (See Temperature Rise Chart)

**AGENCY CERTIFICATION:** None

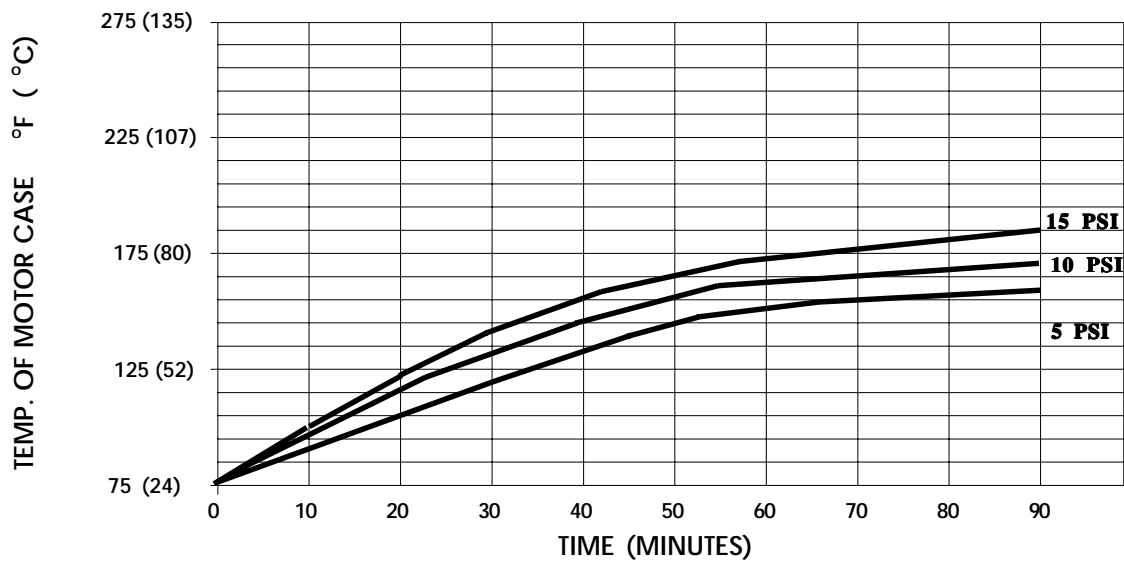
**TYPICAL APPLICATIONS:** General Purpose Transfer Pump

**DIMENSIONS:**      inches (millimeters)



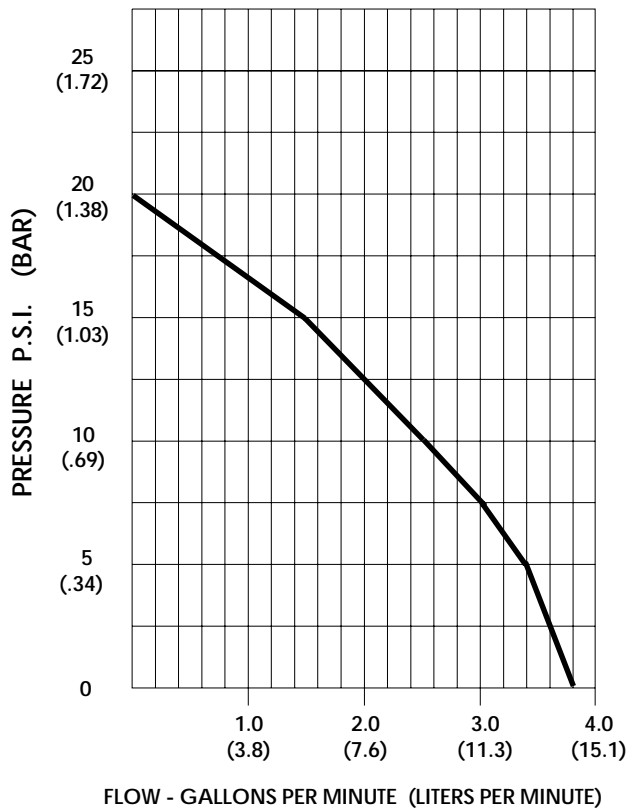
MODEL: 3000-350

**TEMPERATURE RISE**



THIS GRAPH IS FOR USE AS A DESIGN GUIDE. IT IS BASED ON RUNNING CONTINUOUSLY WITH AN AMBIENT TEMPERATURE OF 70° F IN STILL AIR.

**TYPICAL PERFORMANCE**



PRESSURE (PSI/BAR)	FLOW (GPM/LIT)	CURRENT (AMPS)	VOLTAGE (VOLTS)
OPEN	3.8/14.2	6.5	12 VDC
5/34	3.4/12.9	7.1	"
10/69	2.5/9.5	7.4	"
15/1.03	1.5/5.7	8.0	"
20/1.38	0	9.1	"

---

For technical advice or service please take your pump into your local pump service center.

To order pump or parts or for pricing please go to the following links :

[Shurflo Pumps Home >>](#)

[Shurflo Pumps stock list >>](#)