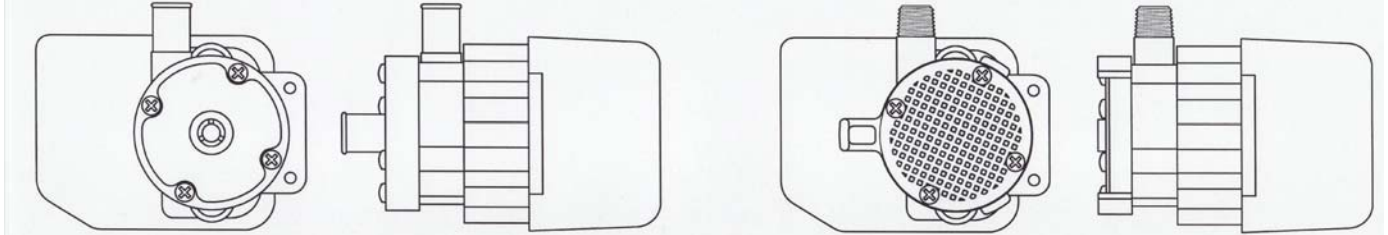


INSTRUCTIONS & REPAIR PARTS FOR

FOR MODELS 1A-MD, 1U-MD, 1C-MD



MODEL 1A-MD

MODEL 1U-MD

RATINGS AND SPECIFICATIONS

| MODEL NO. | CONNECTORS | | H.P. | ELECTRICAL | | G.P.H. AT LISTED HEAD | | | | MAX HEAD | P.S.I. GAGE | DIMENSIONS | | | PACK WT. |
|-------------------------|-------------------------|--------------------------|-------|------------|------|-----------------------|-------|-------|-------|----------|-------------|------------|-----|-------|----------|
| | Inlet | Outlet | | Watts | Amps | 1 Ft. | 3 Ft. | 4 Ft. | 6 Ft. | | | Ht. | Wd. | Lg. | |
| 1U-MD 1C-MD 1A-MD | OPEN ¼ MPT ½ O.D. | ¼ MPT ¼ MPT ½ O.D. | 1/200 | 19 | .4 | 150 | 100 | 36 | 0 | 4.6 Ft. | 2.0 | 3-5/8 | 3 | 3-5/8 | 2.5 lbs. |
| 1A-MD | 3/8 O.D. | 3/8 O.D. | 1/200 | 19 | .4 | 100 | 55 | 30 | 0 | 4.6 Ft. | 2.0 | 3-5/8 | 3 | 3-5/8 | 2.5 lbs. |

PUMP CONSTRUCTION AND SERVICING

March "Orbital" Magnetic Drive Pumps eliminate the conventional shaft seals found in most pumps. This means that there is no rotating seal to wear and allow the liquid being pumped to leak out. In addition to this unique "seal-less" design, the pump is hermetically encapsulated in epoxy. This epoxy encapsulation now allows the pumps to be run fully submerged in many liquids. The models 1U-MD, 1A-MD, and 1C-MD pumps can be run totally submerged or can be run in open air for complete moisture protection.

All these pumps can be serviced with the use of a screwdriver. The only moving parts in the pump other than the motor, is the Impeller-Magnet Assembly which rotates on a stationary spindle and up against a thrust washer. This is the only part that can wear out, and may need to be replaced. See the Repair Parts List for replacement parts if necessary.

U.L. Recognition On Pumps Is For Water Only. For pumping liquids other than water contact factory.

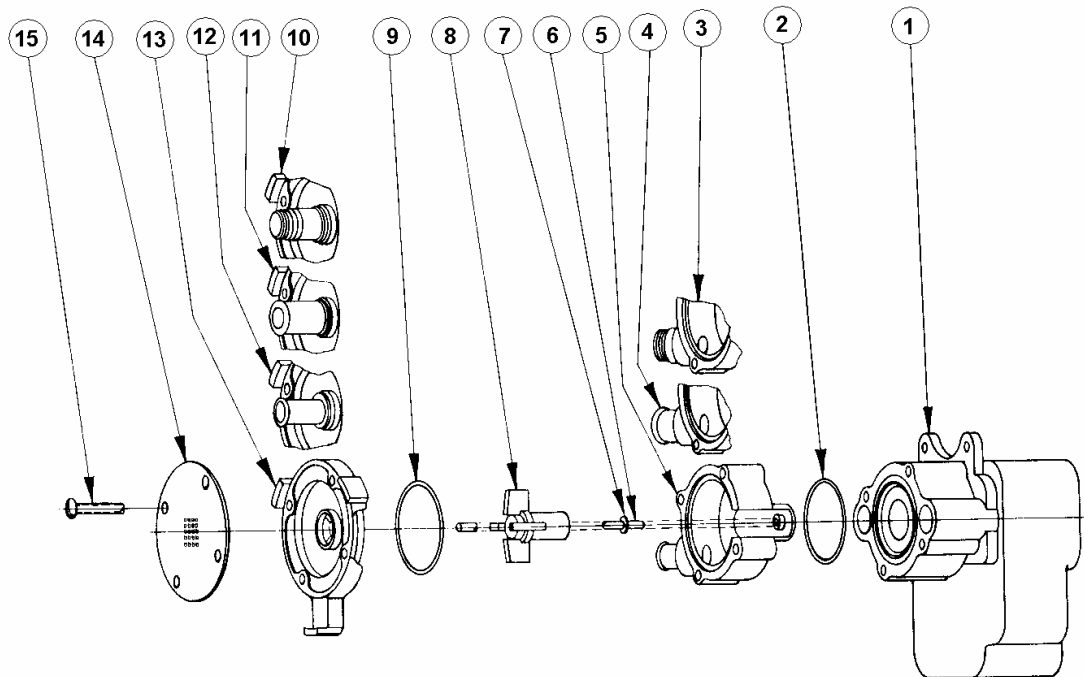
ELECTRICAL & OPERATION

All models are standard in 115 Volt, 60 cycle, 1 phase A.C. All cord sets are U.L. LISTED 18/3 wire SJT plastic cords with ground type molded plugs. Standard cord length is 6 feet. The motors are C.S.A. approved under File NO. 40072. The pumps are U.L. Recognized under the U.L. component program.

Pumps are not self priming and will not produce a suction lift and must be installed with a positive flooded suction. These pumps rely on the liquid being pumped to lubricate the Impeller-Magnet Assembly spinning on the stationary spindle and, therefore, are not intended for dry running.

PUMP MATERIALS

All Screws are type 18-8 stainless steel.
All "O" Ring Gaskets are Buna N Rubber.
The Stationary Spindle is type 316 stainless steel.
Motor Bracket is Glass Filled Noryl.
Pump Housing & Cover is Cylolac or Polypropylene.
Impeller Assembly is Nylon and Ceramic.
Thrust Washer is Teflon.
For other materials available contact the factory.



MODELS 1-MD REPAIR PARTS LIST

| ITEM | DESCRIPTION | QUANTITY | PART NUMBER |
|------|--|----------|----------------|
| 1 | Motor, Bracket, Cord, Drive Mag. Assembly | 1 | 0115-0006-0100 |
| 2 | Bracket "O" Ring, Buna "N" Rubber | 1 | 0115-0017-1000 |
| 3 | Housing with ¼-18 Th'd. Outlet Port (Polypro) | 1 | 0115-0057-1000 |
| 4 | Housing with ½ inch O.D. Outlet Port (Polypro) | 1 | 0115-0059-1000 |
| 5 | Housing with 3/8 inch O.D. Outlet Port (Polypro) | 1 | 0115-0074-1000 |
| 6 | Impeller Shaft (316 Stainless) | 1 | 0115-0032-1000 |
| 7 | Rear Thrust Washer (Teflon) | 1 | 0115-0033-1000 |
| 8 | Impeller and Magnet Assembly (Nylon) | 1 | 0115-0008-0100 |
| 9 | Housing "O" Ring, Buna "N" Rubber | 1 | 0115-0018-1000 |
| 10 | Cover with ¼-18 Th'd. Inlet Port (Polypro) | 1 | 0115-0058-1000 |
| 11 | Cover with ½ inch O.D. Inlet Port (Polypro) | 1 | 0115-0060-1000 |
| 12 | Cover with 3/8 inch O.D. Inlet Port (Polypro) | 1 | 0115-0075-1000 |
| 13 | Cover (Cyclac-ABS) | 1 | 0115-0016-1000 |
| 14 | Inlet Screen (Delrin) | 1 | 0115-0012-1000 |
| 15 | Screws, Self-Tapping | 4 | 0115-0062-1000 |

Contact factory for other materials and/or parts not listed.

LIMITED WARRANTY

March pumps are guaranteed only against defects in workmanship or materials for a period of one year from date of manufacture pumping water. On all other solutions, contact the factory for application assistance. March Pump Application Worksheet 750-130-10 is available for additional warranty information.



1819 PICKWICK AVE., GLENVIEW, IL 60026-1306, U.S.A

0115-0035-1000 R14