

# Little GIANT<sup>®</sup> Pump Company

## PE-1.5-MDI-SC



### Features

- Thermally Protected, Epoxy Encapsulated Motor
- FOR SUBMERSIBLE USE ONLY
- 6' Power Cord with 3-Prong Plug
- Specific Gravity to 1.1
- Fluid Temperature to 77 Degrees F.
- NOTE: Consult your local distributor or the factory for applications with higher ambient temperatures, specific gravities and viscosities.

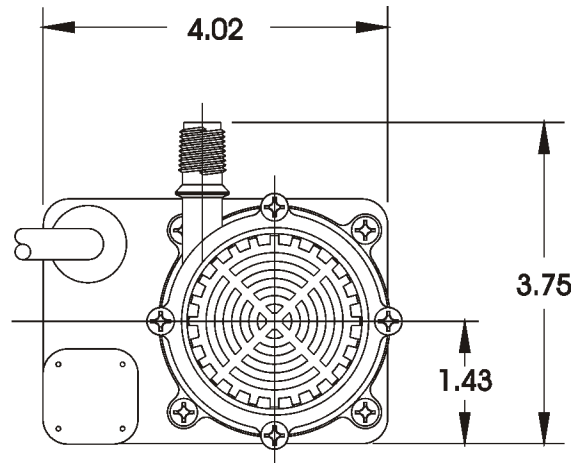
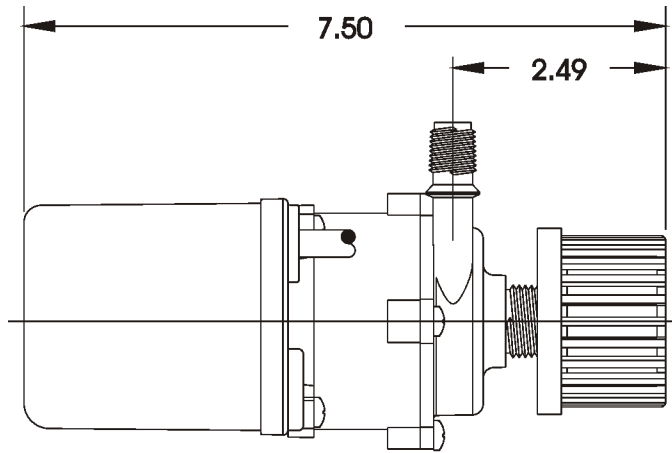
### Construction

- Volute — Glass-filled Polypropylene
- Magnet Housing — Glass-filled Polypropylene
- Impeller — Glass-filled Polypropylene
- Shaft — Ceramic
- Thrust Washers — Ceramic
- O-Ring — Nitrile
- Motor Housing — Polyester/Polyethylene/Epoxy/PVC

The Little Giant PE-1.5-MDI-SC series features leakproof, seal-less magnetic drives and are designed for submersible use only. Volute, magnet housing and impeller are glass-filled polypropylene for excellent chemical resistance. Ceramic shaft and thrust washers are 99.5% pure alumina for excellent wear and trouble-free service. Pumping heads are easily rotated, cleaned or serviced with no special tools required. Spindle shaft is supported at both ends to prevent impeller damage during start-up and stop of pump.

# Little Giant Pump Co.

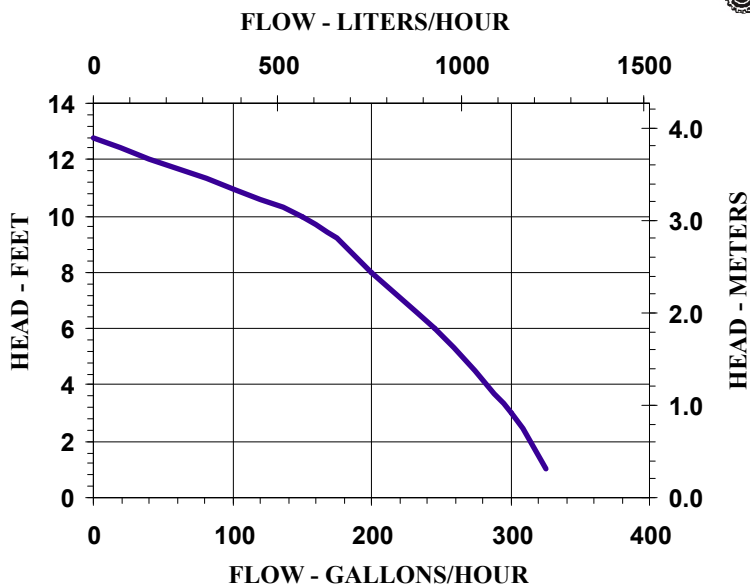
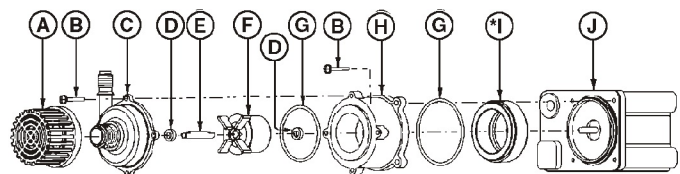
## PE-1.5-MDI-SC



NOTE: Designs and dimensions may vary for various reasons (i.e. type of motor). This information should be used as general guide rather than an unqualified guarantee. Specifications are subject to change without prior notice.

### Specifications

Model No.	Item No.	Intake	Discharge	Listing(s)	HP	Volts	Hertz	Amps	Watts	Performance (GPH @ Head)					Shut Off		Pwr. Cord (ft)	Weight (Lbs.)
										1'	3'	6'	8'	10'	Feet	PSI		
PE-1.5-MDI-SC	589204	1/2" MNPT	1/4" FNPT	UR/C-CSA	1/35	115	60	0.9	63	325	300	245	200	150	12.8	5.5	6	5.00



### Replacement Parts

ITEM	PART NO.	DESCRIPTION
A	118913	Screen
B	902402	Screw
C	189003	Volute
D	921077	Thrust Washer
E	189042	Shaft
F	189010	Impeller
G	924134	O-Ring (Volute)
G	924133	O-Ring (Motor Hsg.)
H	189045	Housing
I	189028	Drive Magnet

**Little Giant Pump Co.**  
 PO Box 12010  
 Okla. City, OK 73157  
 Phone: 405.947.2511  
 Fax: 405.228.1550  
[www.LittleGiantPump.com](http://www.LittleGiantPump.com)

Form 995751— 02/01