

Little GIANT®

1 - M D



Features

- Thermally protected, open, fan-cooled motor
- Sleeve bearings
- 6' power cord with 3-prong plug (no plug on 230V)
- Specific gravity to 1.1
- Fluid temperature to 150°F
- Ambient air temperature to 77°F

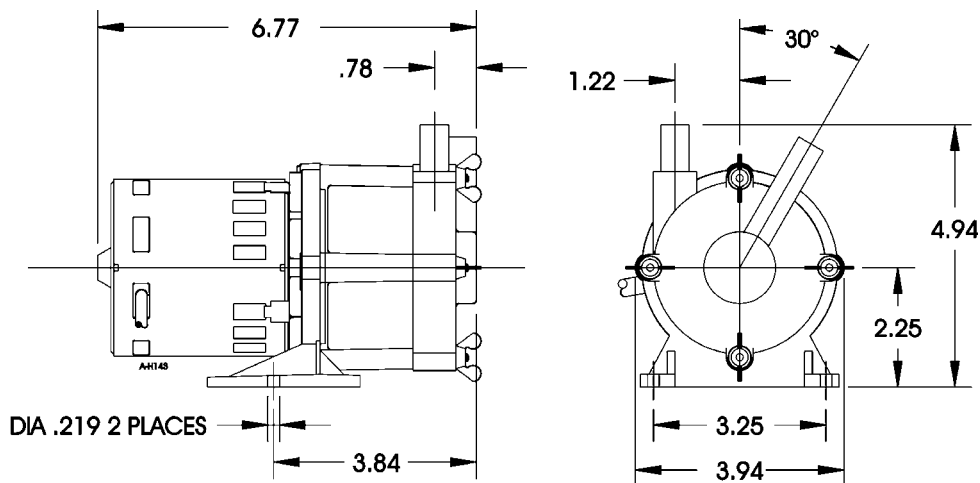
NOTE: Consult your local distributor or the factory for applications with higher ambient temperatures, specific gravities and viscosities.

Construction

- Volute — Glass-filled polypropylene
- Housing — Glass-filled polypropylene
- Impeller — Glass-filled polypropylene and ceramagnet “A” (barium ferrite)
- Shaft — Titanium
- Thrust Washers — Titanium
- O-Ring — Nitrile

The Little Giant MD series features leakproof, seal-less magnetic drives and are designed for in-line, non-submersible use. Volute and magnet housing are glass-filled polypropylene for excellent chemical resistance. Impeller is glass-filled polypropylene and ceramagnet “A” (barium ferrite). Shaft and thrust washers are titanium for excellent wear and trouble-free service. Pumping heads are easily rotated, cleaned or serviced with no special tools required. Spindle shaft is supported at both ends to prevent impeller damage during start-up and stop of pump.

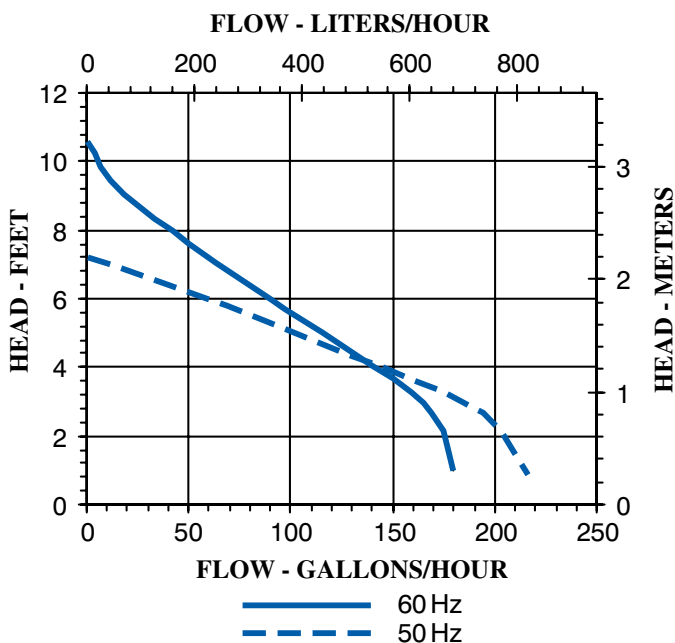
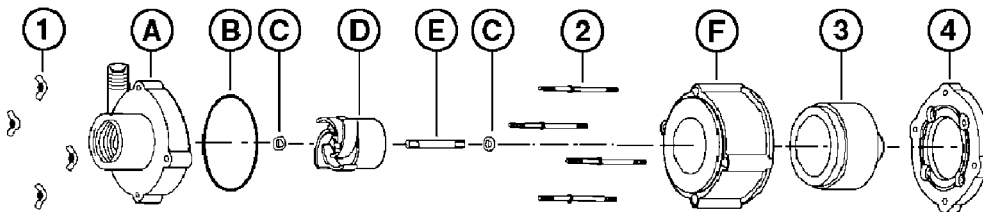
1-MD



NOTE: Designs and dimensions may vary for various reasons (i.e. type of motor). This information should be used as general guide rather than an unqualified guarantee. Specifications are subject to change without prior notice.

Specifications

Model No.	Item No.	Intake Size	Discharge Size	Listing(s)	HP	Volts	Hertz	Amps	Watts	Performance (GPH @ Head)				Shut Off		Power Cord (ft.)	Weight (lbs.)
										1'	3'	6'	9'	Feet	PSI		
1-MD	589002	1/2" Hose	1/2" Hose	UR/C-CSA	1/70	115	60	0.8	60	180	165	90	20	10.6	4.6	6	4.00
1-MD	589012	1/2" Hose	1/2" Hose		1/70	230	50/60	.66/.64	100	180	165	90	20	10.6	4.6	6	6.25
1-MD	589098	1/2" Hose	1/2" Hose		Pump Head Less Motor												2.00



Replacement Parts

ITEM	PART NO.	DESCRIPTION
A	188010	Volute
B	924025	O-ring
C	921065	Thrust washer
D	188100	Impeller
E	188050	Shaft
F	188001	Housing
1	920020	Wing nut
2	911503	Stud, collared
3	188124	Drive magnet
4	920002	Mounting bracket

NOTE: Parts A-F contact fluid

LittleGIANT®
 PO Box 12010 • Oklahoma City, OK 73157
 Phone: 800.701.7894 • Fax: 800.701.8046
 E-mail: customerservice@littlegiant.com