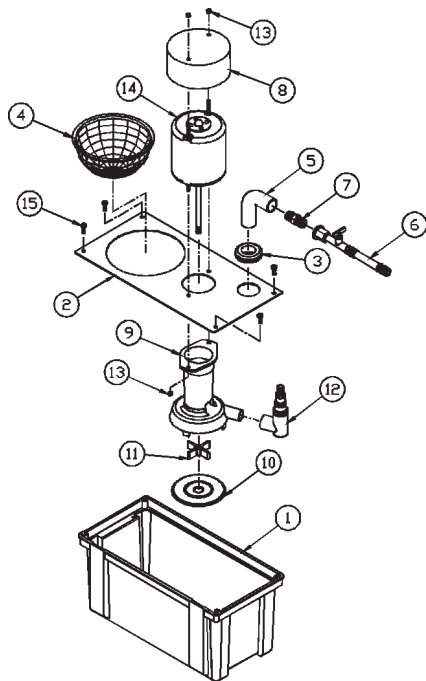


REPLACEMENT PARTS LIST

ITEM NO.	PART NO.	DESCRIPTION	560610 VMC-1	560620 VMC-1
1	153504	Tank	1	1
2	160920	Cover, Tank	1	1
3	925002	Grommet	1	1
4	160206	Screen, Chip	1	1
5	944202	Tubing, Vinyl, 1/2" I.D. x 6'	1	1
6	170387	Valve, Flow Control	1	1
7	941007	Adaptor, 1/4" MNPT x 1/2" Hose	1	1
8	140509	Cap, Motor	1	1
9	140229	Stand/Volute Assembly	1	1
10	140309	Plate, Base	1	1
11	140412	Impeller	1	1
12	140942	Elbow Assembly	1	1
13	920006	Nut, #8-32	4	4
14	977206	Motor, 115V, 4' Cord	1	
14	977708	Motor, 230V, 6' Cord		1
15	902436	Screw, 8-18 x 1/2"	4	4
	540452	Replacement Pump Assy.	1	
	540454	Replacement Pump Assy.		1



Little **GIANT**

Machine Tool Coolant Owner's Manual

Little Giant Pump Company

P. O. Box 12010
Oklahoma City, OK 73157-2010
(405) 947-2511 • Fax: (405) 947-8720

VMC-1

- Assembly
- Safety

- Maintenance
- Repair Parts

CAUTION:

Read Safety Guidelines and Instructions Carefully.

INTRODUCTION

LITTLE GIANT MACHINE TOOL COOLANTS are carefully packaged, inspected and tested to insure safe operation and delivery. When you receive the unit, examine it carefully to determine that there are no broken or damaged parts that may have occurred during shipment. If damage has occurred, make notation and then notify the firm from which you purchased the unit. They will assist you in replacement or repair if required.

SAFETY GUIDELINES

1. Read all instructions and safety guidelines thoroughly. Failure to follow the guidelines and instructions could result in serious bodily injury and/or property damage.
2. Do not pump flammable liquids such as gasoline or fuel oil with Little Giant pumps.
3. When working on the MACHINE TOOL COOLANT or pump, make sure that the power is turned off. Make sure that the pump is disconnected from the power supply.
4. Make sure that the outlet for the pump is grounded.

MACHINE TOOL COOLANT PUMP ASSEMBLY

1. Unpack **MACHINE TOOL COOLANT** from the carton. Check the parts included with the diagram in this instruction sheet for parts.
2. Assembly:
 - A. Feed tubing through grommated discharge hole and attach it to pump discharge. Attach flexible nozzle/valve assembly to the other end of flexible tubing.
 - B. Install motor/base assembly onto tank. Be sure chip collector is in place.
 - C. Your **MACHINE TOOL COOLANT** is now ready for operation. If any leakage occurs, tighten the leaking connection.

MAINTENANCE

Never let sludge or excessive chips build up around pump. Periodically clear out the chip collector and any sludge that may accumulate in the bottom of the tank. The chip collector is designed to filter out abrasive media that may damage the pump.

Never operate MACHINE TOOL COOLANT without chip collector.

Do not use cutting oils with viscosities greater than the pump can handle.

For Parts or Repair, please contact
For Technical Assistance, please contact

1.888.572.9933
1.888.956.0000

LIMITED WARRANTY

Your Little Giant product is guaranteed to be in perfect condition when it leaves our Factory. It is warranted against defective materials and workmanship for a period of 12 months (90 day warranty on Models 1-AA-OM, GKPK, PP-1, PPS-1, PP-12, PPS-12, and PP-230) from date of purchase by the user. No warranty on brush wear in Model 35-OM and impeller or cam in Models PP-1, PP-12, and PP-230.

Any product that should fail for either of the above two reasons and is still within the warranty period will be repaired or replaced at the option of Little Giant as the sole remedy of buyer. For our customers in the CONTINENTAL UNITED STATES: Please return the defective unit, postage paid, to the factory at 3810 North Tulsa, Oklahoma City, OK 73112. All defective product returned under warranty will be fully inspected to determine the cause of failure before warranty is approved.

For our customers located elsewhere; it is not economical, due to duties and freight, to return the pump to the factory for inspection. Please return the defective unit to any authorized distributor or dealer with a brief written explanation of the problem. If there are no apparent signs of customer abuse, unit will be repaired or replaced. If dispute arises over replacement of the pump, the distributor or dealer is to segregate such items and hold for inspection by a representative of Little Giant Pump Company or notify factory with details of the problem for factory disposition and settlement of warranty claim.

DISCLAIMER: THE FOREGOING WARRANTY IS AN EXCLUSIVE WARRANTY IN LIEU OF ANY OTHER EXPRESS WARRANTIES. ANY IMPLIED WARRANTIES (INCLUDING, BUT NOT LIMITED TO ANY IMPLIED WARRANTY OF MERCHANTABILITY OR FITNESS FOR A PARTICULAR PURPOSE) TO THE EXTENT EITHER APPLIES TO A PUMP SHALL BE LIMITED IN DURATION TO THE PERIODS OF THE EXPRESS WARRANTIES GIVEN ABOVE.

Warranty will be VOID if any of the following conditions are found:

- Sealed motor housing opened.
- Product connected to voltage other than indicated on nameplate.
- Cord cut off to a length less than three feet.
- Pump allowed to operate dry (fluid supply cut off).
- Pump used to circulate anything other than fresh water, light oils, or other mild liquids at approximately room temperature.
- Product abuse by customer.

Any oral statements about the product made by the seller, the manufacturer, the representatives or any other parties, do not constitute warranties, shall not be relied upon by the user and are not part of the contract for sale. Seller's and manufacturer's only obligation, and buyer's only remedy, shall be the replacement and/or repair by the manufacturer of the product as described above. NEITHER SELLER NOR THE MANUFACTURER SHALL BE LIABLE FOR ANY INJURY, LOSS OR DAMAGE, DIRECT, INCIDENTAL OR CONSEQUENTIAL (INCLUDING, BUT NOT LIMITED TO INCIDENTAL OR CONSEQUENTIAL DAMAGES FOR LOST PROFITS, LOST SALES, INJURY TO PERSON OR PROPERTY, OR ANY OTHER INCIDENTAL OR CONSEQUENTIAL LOSS), ARISING OUT OF THE USE OR THE INABILITY TO USE THE PRODUCT AND THE USER AGREES THAT NO OTHER REMEDY SHALL BE AVAILABLE TO IT. Before using, the user shall determine the suitability of the product for the intended use, and user assumes all risk and liability whatsoever in connection therewith.

Some states and countries do not allow limitations on how long an implied warranty lasts or the exclusion or limitation of incidental or consequential damages, so the above limitations or exclusions may not apply to you. This warranty gives you specific legal rights, and you may also have other rights which vary from state to state and country to country.

The National Electric Code (in the USA) and similar codes in other countries require a Ground Fault Circuit Interrupter (GFCI) to be installed in the branch circuit supplying fountain equipment rated above 15 volts. 115 volt GFCI's (with various cord lengths) are in stock, and we recommend each pump be used with a GFCI.

LIMITED WARRANTY

LITTLE GIANT WARRANTY STATEMENT

KEEP THIS FOLDER

File this for safe keeping. It may be valuable to you for service under the terms of the warranty.

Date of Purchase _____

Name of Dealer _____

Date Code _____