

# Little GIANT<sup>®</sup> Pump Company

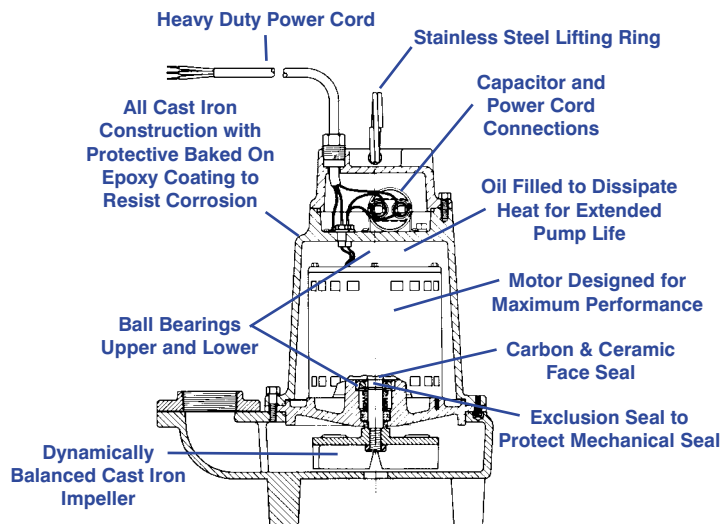
Eliminator Series  
Sump/Effluent Pump

## 16EH SERIES



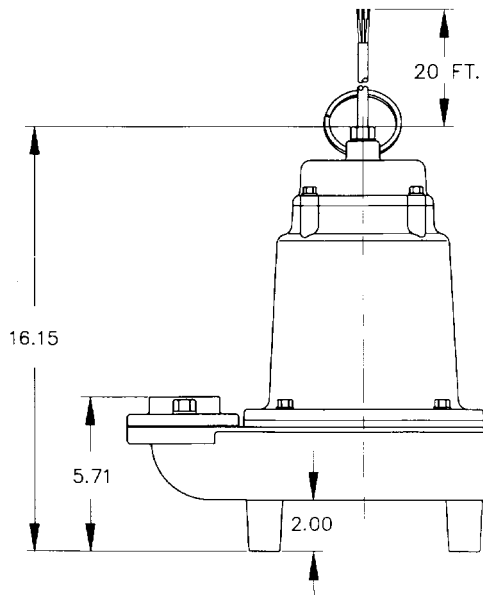
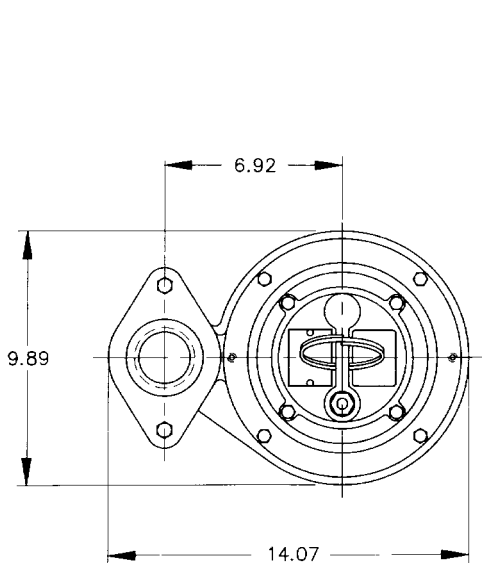
### Features

- Handles liquids and solid waste materials up to 3/4" diameter
- Cast iron pump housings with protective epoxy coating for corrosion and rust resistance
- Oil-filled motor housings for lifetime lubrication and rapid heat dissipation
- Stainless steel screws, bolts and lifting ring
- Mechanical seal (stainless steel spring, nitrite parts, carbon and ceramic faces) for long life and reliability
- Secondary exclusion seal to help protect mechanical seal
- Highspeed, 3450 RPM, 1 HP, ball bearing motor and thermal overload protection
- Permanent split capacitor design
- Capacitor and power cord connections isolated from oil filled housing for ease of oil field maintenance
- Dynamically balanced two vane non-clogging impeller with pump-out vanes extend life of pump



# Little Giant Pump Co.

## 16EH SERIES SUMP/EFFLUENT PUMP

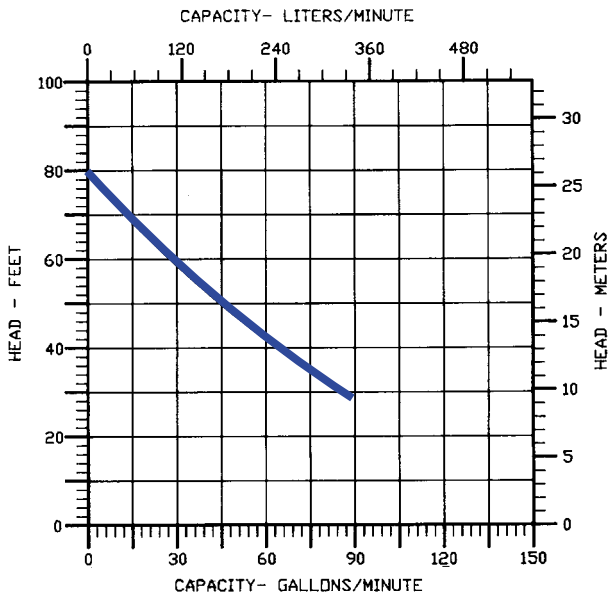


### Specifications

MODEL NO.	ITEM NO.	DISCHARGE	SOLIDS SIZE (Dia. In)	LISTING	HP	VOLTS	PHASE	HZ	SPEED	AMPS/WATTS	SHUT OFF	PSI	PWR. CORD	WEIGHT
16EH-CIM	514520	2" FNPT	3/4"	UL/CSA	1	230	1	60	3450	9.0/2200	81'	35.1	20**	82 LBS.
16EH-CIM	514530	2" FNPT	3/4"	UL/CSA	1	208-240	3*	60	3450	6.6/1350	81'	35.1	20**	82 LBS.
16EH-CIM	514540	2" FNPT	3/4"	UL/CSA	1	460	3*	60	3450	3.2/1350	81'	35.1	20**	82 LBS.

\* 3 phase pumps require a control panel to operate

\*\* w/out plug



### Construction

Motor Housing	Epoxy Coated Cast Iron
Impeller Material	Epoxy Coated Cast Iron
Impeller Type	Non-clog
Volute	Epoxy Coated Cast Iron
Power Cord	16/3, STW
Mechanical Shaft Seal	Carbon/Ceramic
Fasteners	Stainless Steel
Shaft	Stainless Steel
Bearings	Upper and lower ball bearings

---

For technical advice or service please take your pump into your local pump service center.  
To order pump or parts or for pricing please go to the following links :

[Little Giant Pumps Home >>](#)

[Little Giant Pumps stock list >>](#)