

# LittleGIANT®

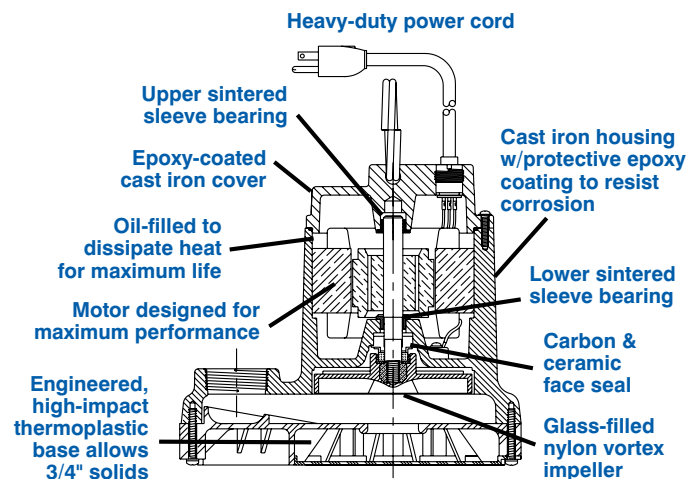
## 8E SERIES



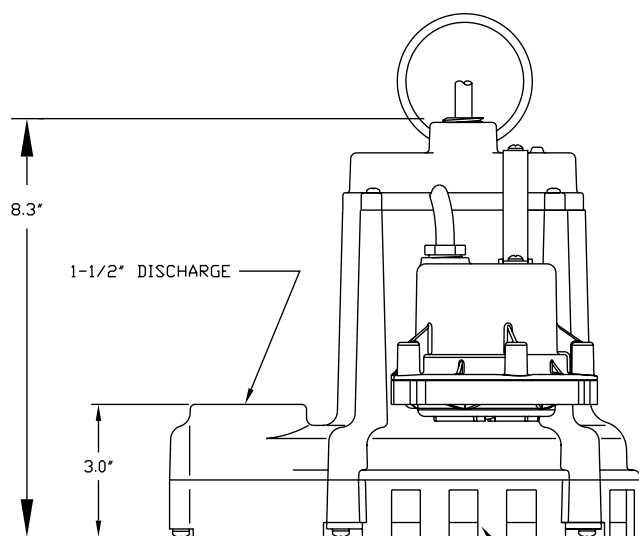
### Features

- Handles liquids and solid waste materials up to 3/4" diameter
- Cast iron pump housing and cover with protective epoxy coating for corrosion resistance
- Oil-filled motor housing for lifetime lubrication and rapid heat dissipation
- Stainless steel fasteners
- Mechanical seals (stainless steel spring, nitrile parts, Carbon and ceramic faces)
- Bearings: Upper and lower sintered sleeve
- Thermal overload protection
- Manual and Automatic models
- Automatic operation has 9" to 14" "On" level and 2" to 6" "Off" level range
- All 115 volt models are UL/CSA listed

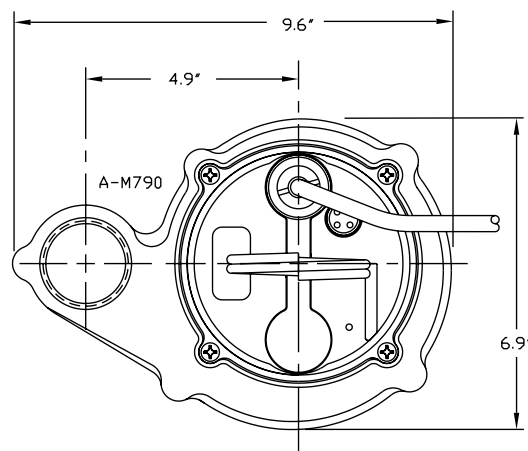
The Model 8E Series de-watering and effluent pumps are for residential and light commercial use. Pumps feature a 1-1/2" FNPT discharge with a lift of 21' and ABS base.



# 8E SERIES



SCREEN TO PASS 3/4" SOLIDS

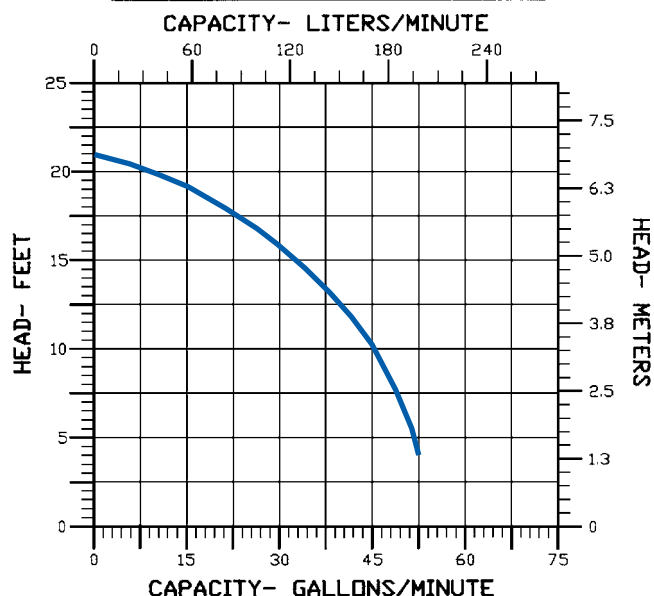


## Specifications

| Model No.  | Item No. | Listing | HP  | Volts | Solids Size (dia. in.) | Running Amps/Watts | Performance (GPM@Head) |     |     |     | Shutoff |        | Cord Length (ft.) | Weight (lbs.) | Dimensions H x L x W (in.) |
|------------|----------|---------|-----|-------|------------------------|--------------------|------------------------|-----|-----|-----|---------|--------|-------------------|---------------|----------------------------|
|            |          |         |     |       |                        |                    | 5'                     | 10' | 15' | 20' | Ft.     | P.S.I. |                   |               |                            |
| 8E-CIM     | 509000   | UL/CSA  | 1/3 | 115   | 3/4                    | 11/900             | 52                     | 45  | 33  | —   | 21      | 9.1    | 10                | 24            | 8.25 x 9.6 x 6.9           |
| 8E-CIA-RFS | 509100   | UL/CSA  | 1/3 | 115   | 3/4                    | 11/900             | 52                     | 45  | 33  | —   | 21      | 9.1    | 10                | 25            | 8.25 x 9.6 x 6.9           |
| 8E-CIM     | 509050   | UL      | 1/3 | 230   | 3/4                    | 6/900              | 52                     | 45  | 33  | —   | 21      | 9.1    | 12                | 23            | 8.25 x 9.6 x 6.9           |
| 8E-CIM     | 509005   | UL/CSA  | 1/3 | 115   | 3/4                    | 11/900             | 52                     | 45  | 33  | —   | 21      | 9.1    | 15                | 24            | 8.25 x 9.6 x 6.9           |
| 8E-CIA-RFS | 509105   | UL/CSA  | 1/3 | 115   | 3/4                    | 11/900             | 52                     | 45  | 33  | —   | 21      | 9.1    | 15                | 26            | 8.25 x 9.6 x 6.9           |
| 8E-CIA-RFS | 509120   | UL/CSA  | 1/3 | 115   | 3/4                    | 11/900             | 52                     | 45  | 33  | —   | 21      | 9.1    | 20                | 26            | 8.25 x 9.6 x 6.9           |
| 8E-CIM     | 509125   | UL/CSA  | 1/3 | 115   | 3/4                    | 11/900             | 52                     | 45  | 33  | —   | 21      | 9.1    | 25                | 25            | 8.25 x 9.6 x 6.9           |

All models are 60 Hz.

8E SERIES PUMP PERFORMANCE CURVE



## Construction

|                       |  |
|-----------------------|--|
| Motor Housing         | Epoxy-coated cast iron                   |
| Impeller Material     | Nylon                                    |
| Impeller Type         | Vortex                                   |
| Volute                | Epoxy-coated cast iron                   |
| Power Cord            | SJTW-A                                   |
| Mechanical Shaft Seal | Nitrile with carbon & ceramic faces      |
| Fasteners             | Stainless steel                          |
| Shaft                 | Cold rolled steel                        |
| Bearings              | Upper and lower sintered sleeve bearings |