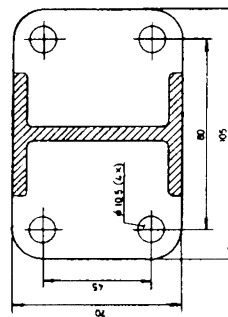
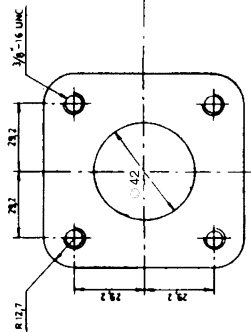
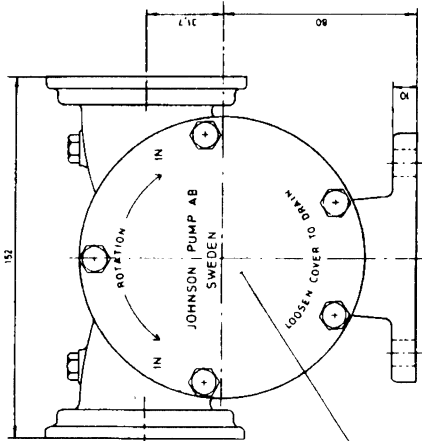
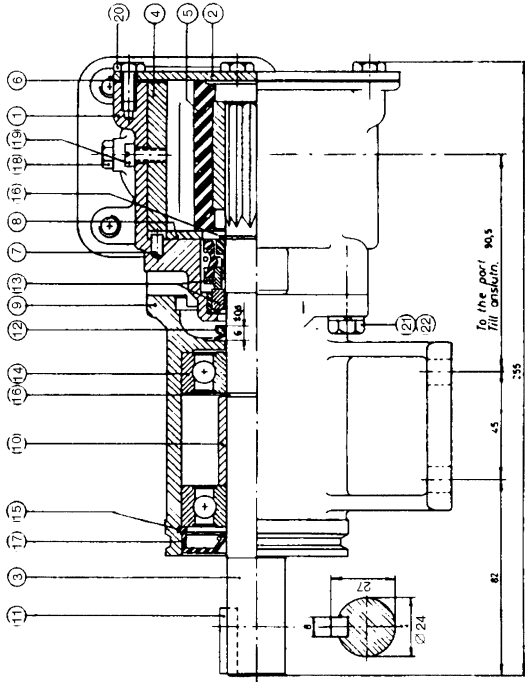


Multipurpose



PUMP NO	PUMPTYPE	RUBBER QUAL.	IMPELLER	CAM	NO	NO
PUMPBETEKNING	PUMPTYP	GUMMINALITE	DESKRIPTION	SKRIV	SKRIV	SKRIV
		NR	BENÄMNING	HR	HR	HR
10-13024-1	F8B-3000	NEOPRENE	ØP-Ø10.3	ØP-Ø10.3	ØP-Ø10.3	ØP-Ø10.3
10-13024-2	F8B-3000	NITRILE	ØP-Ø10.3	ØP-Ø10.3	ØP-Ø10.3	ØP-Ø10.3
10-13024-3	F8B-3000	NITRILE	ØP-Ø10.3	ØP-Ø10.3	ØP-Ø10.3	ØP-Ø10.3
10-13024-4	F8B-3000	NEOPRENE	ØP-Ø10.3	ØP-Ø10.3	ØP-Ø10.3	ØP-Ø10.3
10-13024-5	F8B-3000	NITRILE	ØP-Ø10.3	ØP-Ø10.3	ØP-Ø10.3	ØP-Ø10.3

22	4	Washer	Bricka	05-02-101
21	4	Screw	Skruv	05-04-128
20	5	Screw	Skruv	05-04-46
19	1	Screw	Skruv	See table
18	2	Plug	Plugg	05-03-122
17	1	Lip seal	Läpptätning	05-29-118
16	2	Retaining ring	Låsring	05-34-108
15	1	Retaining ring	Låsring	05-34-118
14	2	Ball bearing	Kullager	05-08-504
13	1	Mech. seal	Mek. tätning	05-20-118
12	1	V-ring	V-ring	05-19-505
11	1	Key	Nil	05-03-124
10	1	Spacer	Distans	01-42747
9	1	Pedestal	Lagerrot	01-13020
8	1	Wear plate	Slitbricka	01-42423
7	1	Pin	Stift	01-42426
6	1	Gasket	Packning	01-42424
5	1	Impeller	Impeller	See table
4	1	Cam	Kam	See table
3	1	Shaft	Åxel	01-35137
2	1	End cover	Lock	01-42422-1
1	1	Body	Pumphus	01-11206

Pos.	Qty.	Description	Material	Dimension	Drawing nr.
1	1	Body	Pumphus	01-11206	

Rev	By	Check	Date
01			05/01/10
02			05/01/10
03			05/01/10
04			05/01/10
05			05/01/10