

SERVICE INSTRUCTIONS

For Detroit Diesel Service Kit

MODEL NUMBER

5197223, 5197224 AND 23504306

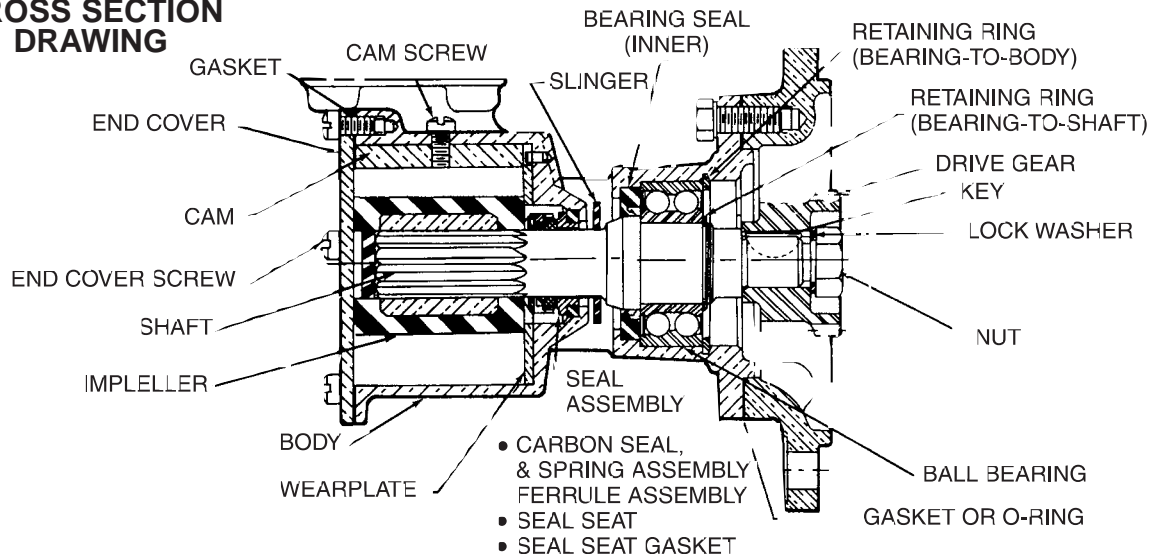
DISASSEMBLY

1. Remove end cover screws, end cover and gasket.
2. Remove impeller. To facilitate removal, use water pump pliers grasping the hub, or two pair regular pliers grasping opposite blades.
3. Remove cam screw, cam and wearplate.
4. Remove seal with hooked wire. Remove seal seat and gasket.
5. Remove lock nut, lock washer, washer and gear.
6. Remove bearing-to-body retaining ring.
7. Pressing on impeller end of shaft, remove shaft and bearing assembly from body.
8. Supporting bearing inner race, press shaft through bearing.
9. Remove slinger from drain area.
10. Using extreme care not to mar body bore, insert screwdriver between OD of inner bearing seal and pump bore and pry out the seal. NOTE: Inspect all parts for wear or damage and replace where necessary.

THIS SERVICE KIT FITS THE FOLLOWING PUMP MODELS

DD	ITT JABSCO
5107480	2570-0021
5115396	2570-0011
5115652	3110-0011
5115800	3240-1011
5115801	3240-0011
5186250	2570-0001
5187140	3240-1001
5187141	3240-0001
5187424	3110-0001
23501083	2570-0051
23507971	2570-3000
23513002	2570-0151

CROSS SECTION DRAWING



ASSEMBLY

1. Lubricate inner bearing seal with grease and press into body bearing seal bore with lip facing towards the bearing bore.
2. Press shaft into bearing using care to support inner race of bearing and install bearing-to-shaft retaining ring with flat side against bearing.
3. Place slinger in drain area on top of seal bore.
4. Coat shaft shoulder liberally with grease and insert spline end of shaft through bearing seal and slinger until bearing contacts body.
5. Pressing on bearing outer race, slowly press bearing into bore, rotating shaft during press operation to prevent damage to bearing seal lip.
6. Install bearing-to-body retaining ring in body groove with flat side toward bearing.
7. Install key in shaft key slot.
8. Install gear, lock washer and lock nut.
9. Install wearplate, aligning slot in wearplate with dowel pin in body.
10. Apply a thin coat of sealant to cam screw threads, top side and back end of cam and install in body with cam screw.
11. Lubricate seal gasket of seal seat and gasket assembly with water and insert in seal bore of body with polished surface facing outward. Care must be taken not to mar or scratch seal seat face. Installing this assembly with a slight rotary motion will insure seating the gasket firmly in the cavity.
12. Install balance of seal assembly with polished carbon seal face against seal seat. The seal assembly consists of the carbon seal ring, tensioning spring and rubber boot.
13. Lubricate impeller bore with a light coat of grease and start impeller into bore with a rotary motion until splines engage, then push into bore.
14. Install gasket and end cover and secure with end cover screws.

ECO NO	BY	DATE	CHK	DATE	APVD	DATE
1033	JN	12-18-90	JN	12-18-90		12-29-90
1088	JN	12-18-90	JN	12-29-90		12-29-90
1292	JN	12-18-90	JN	12-29-90		12-29-90
1300	JN	12-18-90	JN	12-29-90		12-29-90
1404	JN	12-18-90	JN	12-29-90		12-29-90
1405	JN	12-18-90	JN	12-29-90		12-29-90
1406	JN	12-18-90	JN	12-29-90		12-29-90
1407	JN	12-18-90	JN	12-29-90		12-29-90
1408	JN	12-18-90	JN	12-29-90		12-29-90
1409	JN	12-18-90	JN	12-29-90		12-29-90

REV	DESCRIPTION	DATE	BY	CHK	DATE
P1	REVISED & REWORK (COMPLETED ASST & BBL OF WFL)				
P2	REVISED DRAWING				
P3	REVISED DRAWING				
P4	REVISED DRAWING				
P5	REVISED DRAWING				
P6	REVISED DRAWING				
P7	REVISED DRAWING				
P8	REVISED DRAWING				
P9	REVISED DRAWING				
P10	REVISED DRAWING				
P11	REVISED DRAWING				
P12	REVISED DRAWING				

ITIT Industries
DETROIT DIESEL PUMP

UNLESS OTHERWISE SPECIFIED:
DIMENSIONS AND TOLERANCES PER ANSI Y14.5-1994

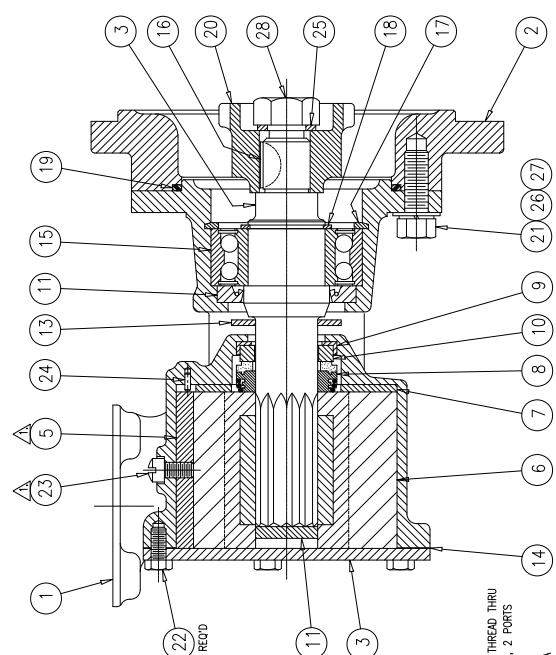
THIS DOCUMENT CONTAINS PROPRIETARY INFORMATION OF IT INDUSTRIES. THE DOCUMENT IS ISSUED IN SHORT QUANTITIES FOR MANUFACTURE, PRODUCTION OR REPAIR. IT IS NOT TO BE REPRODUCED OR TRANSMITTED IN ANY FORM OR BY ANY MEANS WITHOUT THE EXPRESS WRITTEN PERMISSION OF IT INDUSTRIES.

UNLESS OTHERWISE SPECIFIED:
DIMENSIONS AND TOLERANCES PER ANSI Y14.5-1994

APPROVALS: DESIGNER: J. WEISBACH DATE: 4/19/03
CHECKER: J. WEISBACH DATE: 4/19/03
DATE: 4/19/03
SCALE: 1/2" = 1"

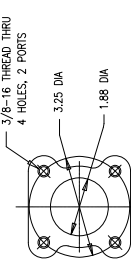
REV: 1
SHEET: 1 OF 1

ITEM	PART NO	DESCRIPTION	QTY	REF	REF	REF	REF
1	2584-8000	BODY - CASTING	1	1	1	1	1
2	2584-0000	BODY - MACHINING	1	1	1	1	1
3	2566-0020	ADAPTOR	1	1	1	1	1
4	15397-0000	END COVER	1	1	1	1	1
5	834-6000	CAM	1	1	1	1	1
6	17935-0111	IMPELLER	1	1	1	1	1
7	2574-6000	WEAR PLATE	1	1	1	1	1
8	96080-0374	SEAL, SUB-ASSY	1	1	1	1	1
9	10162-0000	SEAL, CUP	1	1	1	1	1
10	10163-0000	SEAL, SEAT	1	1	1	1	1
11	817-6000	SEAL, LIP	1	1	1	1	1
12	4346-0001	SEAL, SPLINE	1	1	1	1	1
13	3181-6000	SUNGER	1	1	1	1	1
14	816-6000	GASKET	1	1	1	1	1
15	2583-0000	GASKET	1	1	1	1	1
16	92600-6040	BEARING, BALL	1	1	1	1	1
17	91402-0050	KEY, WOODRUFF	1	1	1	1	1
18	91700-2460	RING, RETAINING	1	1	1	1	1
19	92000-1372	O-RING	1	1	1	1	1
20	2581-6000	GEAR, DRIVE	1	1	1	1	1
21	91095-1772	SCREW, HEX HD, 3/8-16 x 1.00, CRCS	6	6	6	6	6
22	91095-0060	SCREW, HEX HD, 1/4-20 x 1/2, CRCS	5	5	5	5	5
23	91095-6040	SCREW, FILL HD, 1/4-20 x 1/2, BRASS	1	1	1	1	1
24	91095-0050	SCREW, FILL HD, 1/4-20 x 1/2, BRASS	1	1	1	1	1
25	91095-0000	PNL, DOWEL	1	1	1	1	1
26	91095-0010	WASHER, LOCK	6	6	6	6	6
27	91095-0020	WASHER, LOCK	6	6	6	6	6
28	91085-0100	NUIT, 3/8"	1	1	1	1	1

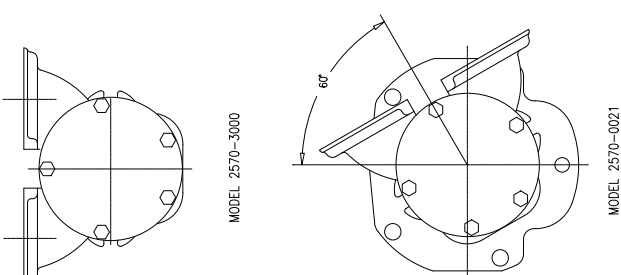


SECTION A-A
SCALE: 1/1

MODEL 2570-0001 ONLY

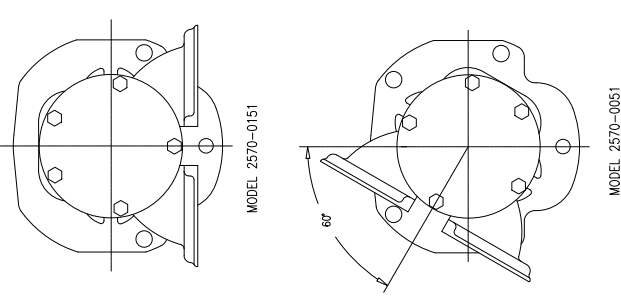


MODEL 2570-0001 & 2570-0011



MODEL 2570-3000

MODEL 2570-0021



MODEL 2570-0151

MODEL 2570-0051

NOTES: UNLESS OTHERWISE SPECIFIED:
 ⚠ COAT O.D. OF CAM, ITEM 5 AND THREADS OF CAM SCREW, ITEM 21, WITH PERMATEX PUMP-A-GASKET RESIN SOLUTION.
 ⚠ MARK END COVER, ITEM 4 WITH DDC PART NO. DO NOT MARK WITH JABSCO MODEL NO.

JABSCO MODEL NO. DDC PART NO.

2570-0001	5186250
2570-0011	5115396
2570-0021	5107480
2570-0151	23513002
2570-3000	23507971

TORQUE REQUIREMENTS

ITEM	REQUIRED TORQUE
21	13 - 15 FT/LBS
22	75 - 80 IN/LBS
23	42 - 46 IN/LBS
28	35 - 40 FT/LBS

ITIT Industries
DETROIT DIESEL PUMP

UNLESS OTHERWISE SPECIFIED:
DIMENSIONS AND TOLERANCES PER ANSI Y14.5-1994

APPROVALS: DESIGNER: J. WEISBACH DATE: 4/19/03
CHECKER: J. WEISBACH DATE: 4/19/03
DATE: 4/19/03
SCALE: 1/2" = 1"

REV: 1
SHEET: 1 OF 1