

SERVICE INSTRUCTIONS

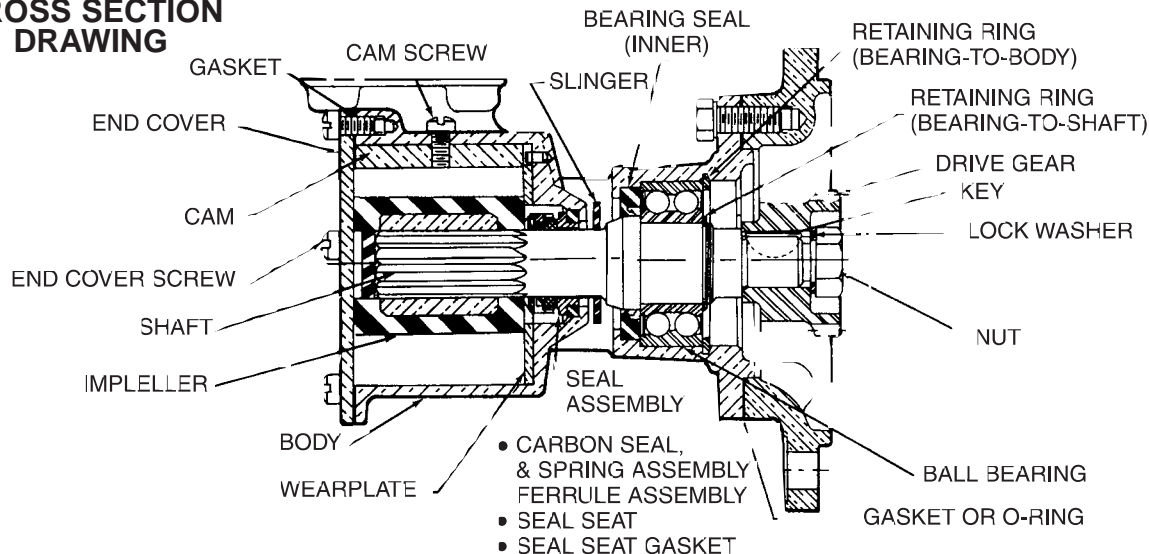
For Detroit Diesel Service Kit

MODEL NUMBER**5197223, 5197224 AND 23504306****DISASSEMBLY**

1. Remove end cover screws, end cover and gasket.
2. Remove impeller. To facilitate removal, use water pump pliers grasping the hub, or two pair regular pliers grasping opposite blades.
3. Remove cam screw, cam and wearplate.
4. Remove seal with hooked wire. Remove seal seat and gasket.
5. Remove lock nut, lock washer, washer and gear.
6. Remove bearing-to-body retaining ring.
7. Pressing on impeller end of shaft, remove shaft and bearing assembly from body.
8. Supporting bearing inner race, press shaft through bearing.
9. Remove slinger from drain area.
10. Using extreme care not to mar body bore, insert screwdriver between OD of inner bearing seal and pump bore and pry out the seal. NOTE: Inspect all parts for wear or damage and replace where necessary.

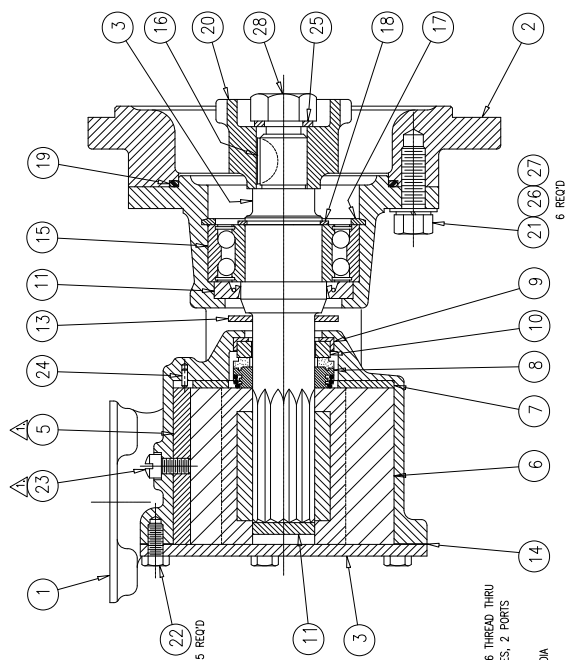
THIS SERVICE KIT FITS THE FOLLOWING PUMP MODELS

DD	ITT JABSCO
5107480	2570-0021
5115396	2570-0011
5115652	3110-0011
5115800	3240-1011
5115801	3240-0011
5186250	2570-0001
5187140	3240-1001
5187141	3240-0001
5187424	3110-0001
23501083	2570-0051
23507971	2570-3000
23513002	2570-0151

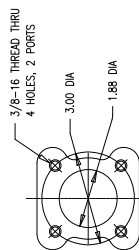
**CROSS SECTION
DRAWING****ASSEMBLY**

1. Lubricate inner bearing seal with grease and press into body bearing seal bore with lip facing towards the bearing bore.
2. Press shaft into bearing using care to support inner race of bearing and install bearing-to-shaft retaining ring with flat side against bearing.
3. Place slinger in drain area on top of seal bore.
4. Coat shaft shoulder liberally with grease and insert spline end of shaft through bearing seal and slinger until bearing contacts body.
5. Pressing on bearing outer race, slowly press bearing into bore, rotating shaft during press operation to prevent damage to bearing seal lip.
6. Install bearing-to-body retaining ring in body groove with flat side toward bearing.
7. Install key in shaft key slot.
8. Install gear, lock washer and lock nut.
9. Install wearplate, aligning slot in wearplate with dowel pin in body.
10. Apply a thin coat of sealant to cam screw threads, top side and back end of cam and install in body with cam screw.
11. Lubricate seal gasket of seal seat and gasket assembly with water and insert in seal bore of body with polished surface facing outward. Care must be taken not to mar or scratch seal seat face. Installing this assembly with a slight rotary motion will insure seating the gasket firmly in the cavity.
12. Install balance of seal assembly with polished carbon seal face against seal seat. The seal assembly consists of the carbon seal ring, tensioning spring and rubber boot.
13. Lubricate impeller bore with a light coat of grease and start impeller into bore with a rotary motion until splines engage, then push into bore.
14. Install gasket and end cover and secure with end cover screws.

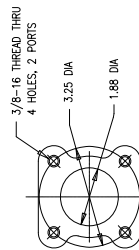
REV	DESCRIPTION	ECO NO	BY	DATE	CHK	DATE	APVD	DATE
P1	REVISED & REWORKED (CORRECTION, ASSY & BILL OF MATERIAL)	1033	HW	3-15-90	JN	4-19-90	N5	4-25-90
P2	REVISED BOM FOR ROPS							
R1	ADDED 256A-800A-800A - CASTING TO ITEM 1	1820	HW	1-17-92	WM	1-26-92	WM	1-26-92
S1	SEE U/I ECO	1300	JNR	3/8/93				
T	SEE U/I ECO	13490	JNR	2/17/94				
	SEE U/I ECO	13903	JNR	1/12/95				



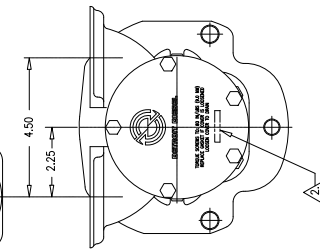
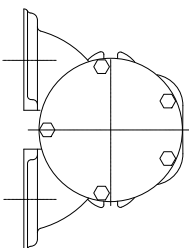
SECTION A-A
SCALE: 1/1



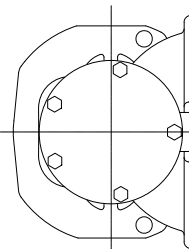
MODEL 2570-0001 ONLY



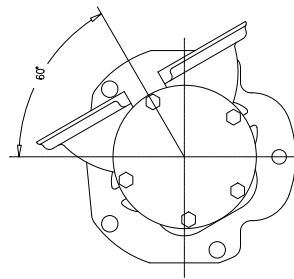
150

MODEL 2570-0001
& 2570-0011

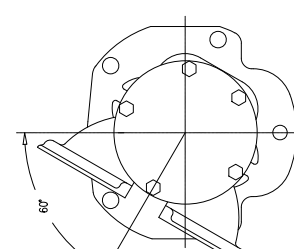
MODEL 2570-3000



MODEL 2570-0151



MODEL 2570-0021



MODEL 2570-0051

ITEM	PART NO	DESCRIPTION	QTY					
			-0001	-0011	-0021	-0051	-015	-3000
1	2564-8000	BODY - CASTING						
1	2564-0000	BODY - MACHING	REF					
1	2564-0010	BODY - MACHING		REF				
2	2566-0020	ADAPTOR	1	1	1	1	1	1
3	2567-6001	SHAFT	1	1	1	1	1	1
4	15397-0000	END COVER	1	1	1	1	1	1
5	834-6001	CAM	5	834-6001	CAM	1	1	1
6	2951-6000	CAM	1	1	1	1	1	1
6	17935-0111	IMPELLER	1	1	1	1	1	1
7	2574-6000	WEAR PLATE	1	1	1	1	1	1
8	96080-0374	SEAL, SUB-ASSY	1	1	1	1	1	1
9	10162-0000	SEAL, CUP	1	1	1	1	1	1
10	10163-0000	SEAL, CUP	1	1	1	1	1	1
11	817-6000	SEAL, LIP	1	1	1	1	1	1
12	4346-0001	SEAL, SPINE	1	1	1	1	1	1
13	3181-6000	SLINGER	1	1	1	1	1	1
14	816-6000	GASKET	1	1	1	1	1	1
14	2553-0000	GASKET	1	1	1	1	1	1
15	92600-6040	BEARING, BALL	1	1	1	1	1	1
16	91402-0050	KEY, WOODRUFF	1	1	1	1	1	1
17	91700-2460	KEY, RETAINING	1	1	1	1	1	1
18	91700-2450	RING, RETAINING	1	1	1	1	1	1
19	92000-1372	O-RING	1	1	1	1	1	1
20	2581-6000	SCREW, HEX	2	2581-6000	SCREW, HEX	1	1	1
21	91095-1272	SCREW, HEX HD, 3/8-16 x 1.00, CRES	6	6	6	6	6	6
22	91095-0060	SCREW, HEX HD, 1/4-20 x 1/2, CRES	5	5	5	5	5	5
23	91005-6040	SCREW, FILL HD, 1/4-20 x 1/2, BRASS	1	1	1	1	1	1
23	91005-0050	SCREW, FILL HD, 1/4-20 x 1/2, BRASS	1	1	1	1	1	1
24	2575-6000	PNL, DOWEL	1	1	1	1	1	1
25	91608-0010	WASHER, LOCK	1	1	1	1	1	1
26	91602-0090	WASHER, LOCK	6	6	6	6	6	6
27	91605-0070	WASHER	6	6	6	6	6	6
28	91085-0100	NUT, JAM	1	1	1	1	1	1

NOTES: UNLESS OTHERWISE SPECIFIED
 A COAT O.D. OF CAM, ITEM 5 AND THREADS
 OF CAM SCREW, ITEM 21, WITH PERMATEX
 FORM-A-GASKET RESIN SOLUTION.

2. MARK END COVER, ITEM 4 WITH DDC PART NO.
DO NOT MARK WITH JABSCO MODEL NO

SCS MODEL NO. DDC PART NO.

2570-0001
2570-0011
2570-0021
2570-0051
2570-0151
2570-3000

15507
15508
15509
15510
15511
15512
15513
15514
15515
15516
15517
15518
15519
15520
15521
15522
15523
15524
15525
15526
15527
15528
15529
15530
15531
15532
15533
15534
15535
15536
15537
15538
15539
15540
15541
15542
15543
15544
15545
15546
15547
15548
15549
15550
15551
15552
15553
15554
15555
15556
15557
15558
15559
15560
15561
15562
15563
15564
15565
15566
15567
15568
15569
15570
15571
15572
15573
15574
15575
15576
15577
15578
15579
15580
15581
15582
15583
15584
15585
15586
15587
15588
15589
15590
15591
15592
15593
15594
15595
15596
15597
15598
15599
15600
15601
15602
15603
15604
15605
15606
15607
15608
15609
15610
15611
15612
15613
15614
15615
15616
15617
15618
15619
15620
15621
15622
15623
15624
15625
15626
15627
15628
15629
15630
15631
15632
15633
15634
15635
15636
15637
15638
15639
15640
15641
15642
15643
15644
15645
15646
15647
15648
15649
15650
15651
15652
15653
15654
15655
15656
15657
15658
15659
15660
15661
15662
15663
15664
15665
15666
15667
15668
15669
15670
15671
15672
15673
15674
15675
15676
15677
15678
15679
15680
15681
15682
15683
15684
15685
15686
15687
15688
15689
15690
15691
15692
15693
15694
15695
15696
15697
15698
15699
15700
15701
15702
15703
15704
15705
15706
15707
15708
15709
15710
15711
15712
15713
15714
15715
15716
15717
15718
15719
15720
15721
15722
15723
15724
15725
15726
15727
15728
15729
15730
15731
15732
15733
15734
15735
15736
15737
15738
15739
15740
15741
15742
15743
15744
15745
15746
15747
15748
15749
15750
15751
15752
15753
15754
15755
15756
15757
15758
15759
15760
15761
15762
15763
15764
15765
15766
15767
15768
15769
15770
15771
15772
15773
15774
15775
15776
15777
15778
15779
15780
15781
15782
15783
15784
15785
15786
15787
15788
15789
15790
15791
15792
15793
15794
15795
15796
15797
15798
15799
15800
15801
15802
15803
15804
15805
15806
15807
15808
15809
15810
15811
15812
15813
15814
15815
15816
15817
15818
15819
15820
15821
15822
15823
15824
15825
15826
15827
15828
15829
15830
15831
15832
15833
15834
15835
15836
15837
15838
15839
15840
15841
15842
15843
15844
15845
15846
15847
15848
15849
15850
15851
15852
15853
15854
15855
15856
15857
15858
15859
15860
15861
15862
15863
15864
15865
15866
15867
15868
15869
15870
15871
15872
15873
15874
15875
15876
15877
15878
15879
15880
15881
15882
15883
15884
15885
15886
15887
15888
15889
15890
15891
15892
15893
15894
15895
15896
15897
15898
15899
15900
15901
15902
15903
15904
15905
15906
15907
15908
15909
15910
15911
15912
15913
15914
15915
15916
15917
15918
15919
15920
15921
15922
15923
15924
15925
15926
15927
15928
15929
15930
15931
15932
15933
15934
15935
15936
15937
15938
15939
15940
15941
15942
15943
15944
15945
15946
15947
15948
15949
15950
15951
15952
15953
15954
15955
15956
15957
15958
15959
15960
15961
15962
15963
15964
15965
15966
15967
15968
15969
15970
15971
15972
15973
15974
15975
15976
15977
15978
15979
15980
15981
15982
15983
15984
15985
15986
15987
15988
15989
15990
15991
15992
15993
15994
15995
15996
15997
15998
15999
16000
16001
16002
16003
16004
16005
16006
16007
16008
16009
16010
16011
16012
16013
16014
16015
16016
16017
16018
16019
16020
16021
16022
16023
16024
16025
16026
16027
16028
16029
16030
16031
16032
16033
16034
16035
16036
16037
16038
16039
16040
16041
16042
16043
16044
16045
16046
16047
16048
16049
16050
16051
16052
16053
16054
16055
16056
16057
16058
16059
16060
16061
16062
16063
16064
16065
16066
16067
16068
16069
16070
16071
16072
16073
16074
16075
16076
16077
16078
16079
16080
16081
16082
16083
16084
16085
16086
16087
16088
16089
16090
16091

TORQUE REQUIREMENTS	
ITEM	REQUIRED TORQUE

ITEM#	REQUIRED TORQUE
21	13 - 15 FT/LBS

22	75 - 80 IN/LBS
23	42 - 46 IN/LBS

ITEM	REQUIRED TORQUE
21	13 – 15 FT/LBS
22	75 – 80 IN/LBS
23	42 – 46 IN/LBS
28	35 – 40 FT/LBS

TORQUE REQUIREMENTS

TTT Industries Registered in the State of Michigan		JARBORO 40000 WES. G. AVE. FLORET FORTMILL WES. G. AVE.	
MAIL STOP _____ APPROVALS _____ DATE _____ CHECKED BY J. REBERKOP 3/19/2002 AND BY L. SANTOS 4/19/2002 DO NOT SCALE DRAWING		DETROIT DIESEL PUMP SIZE COMPLETED FILE NO DWG NO 2570-XXXX SCALE 1/2" = NOTED SHEET 1 OF 1 U	
TTT INDUSTRIES ARE UNLAWFUL OFFENSES PROVIDED PHANTOMS 441/22 DOMAINS 441/4 ALL MANUFACTURING AND TOLERANCE 11/20/2002 11/20/2002		THIS DOCUMENT CONTAINS INFORMATION OF TTT INDUSTRIES. THIS DOCUMENT IS ISSUED IN STRICT CONFIDENCE TO THE PERSONS AND COMPANIES NAMED HEREIN FOR THE PURPOSES OF THE DESIGN, MANUFACTURING, PRODUCTION OR PROSECUTION WITHOUT THE EXPRESS WRITTEN PERMISSION OF TTT INDUSTRIES.	

UNLESS OTHERWISE SPECIFIED	TOLERANCES ARE: FRACTIONS +0/-1/32	MATL SPEC	MTI Industries <input checked="" type="checkbox"/> JABSCO COSTA MESA, CA
----------------------------	--	-----------	--

FLOET FOOTBALL PUNCH, CA	Registered for life	TITLE _____
		DATE _____
APPROVALS _____ _____ _____		DECIMALS .XX=4 _____ .XXX=4 _____ .XXXX=4 _____
ALL DIMENSIONS ARE IN INCHES ALL DIMENSIONS AND TOLERANCING PER ASME Y14.5M-1994		

"THIS DOCUMENT CONTAINS PROPRIETARY INFORMATION OF		MODEL	DATE
		DESIGN BY	3/10/00
		H. VU	

DETROIT DIESEL PUMP

REV	DWG NO	SIZE	COMPUTER FILE NO
11	2570-XXXX	D	
DATE	4/19/00	DESIGNED BY	J. KENSHICK
APPROVED BY	4/20/00	DATE	N. SANTOS

WITHOUT THE EXPRESS WRITTEN PERMISSION OF IIT INDUSTRIES, NO PART OF THIS DRAWING IS TO BE REPRODUCED OR TRANSMITTED IN ANY FORM OR BY ANY MEANS, ELECTRONIC OR MECHANICAL, INCLUDING PHOTOCOPYING, RECORDING, OR BY ANY INFORMATION STORAGE AND RETRIEVAL SYSTEM.	DATE	BY	REV.	DESCRIPTION
	1	1	1	1
	1	1	1	1

3	2	1
---	---	---