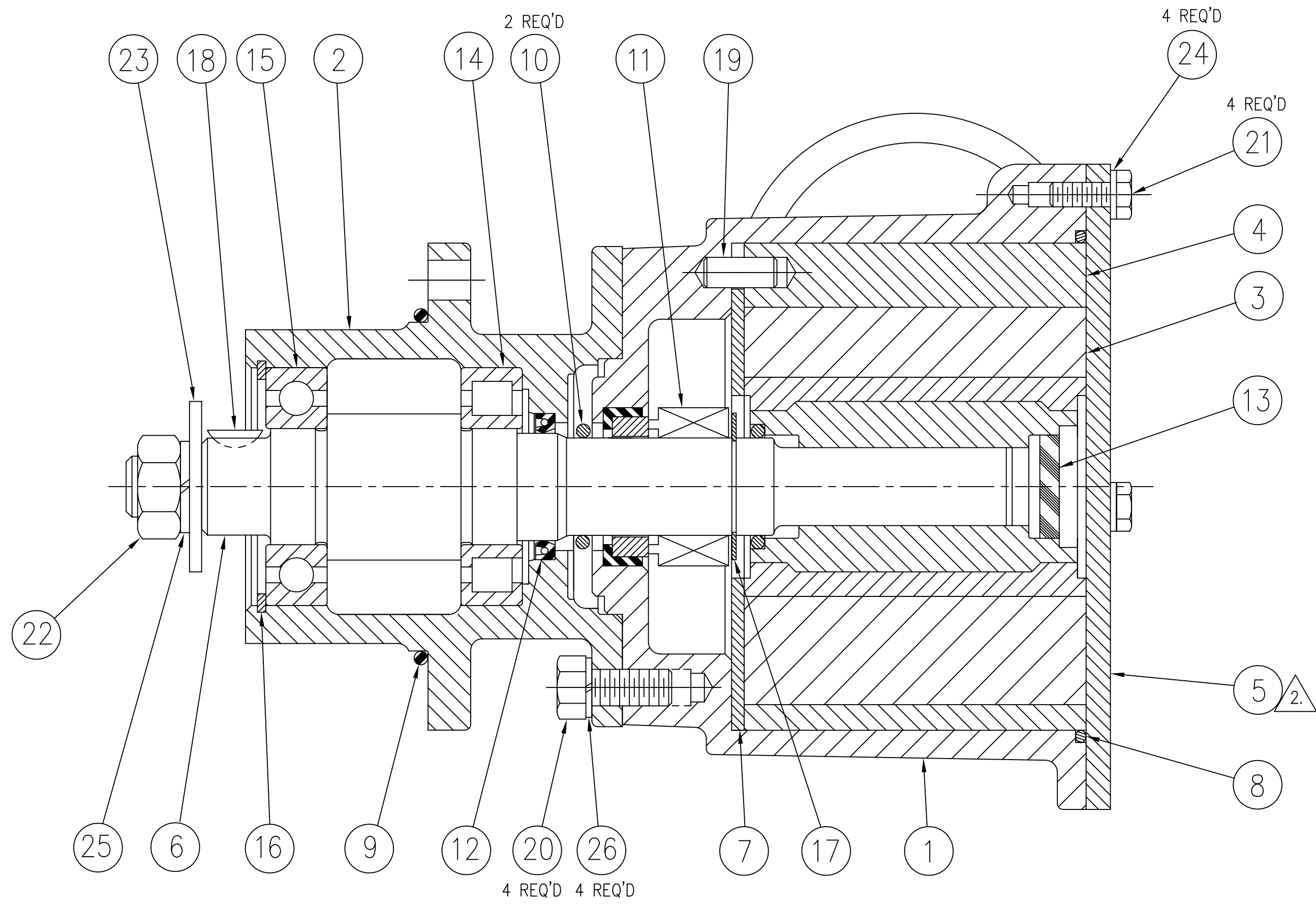
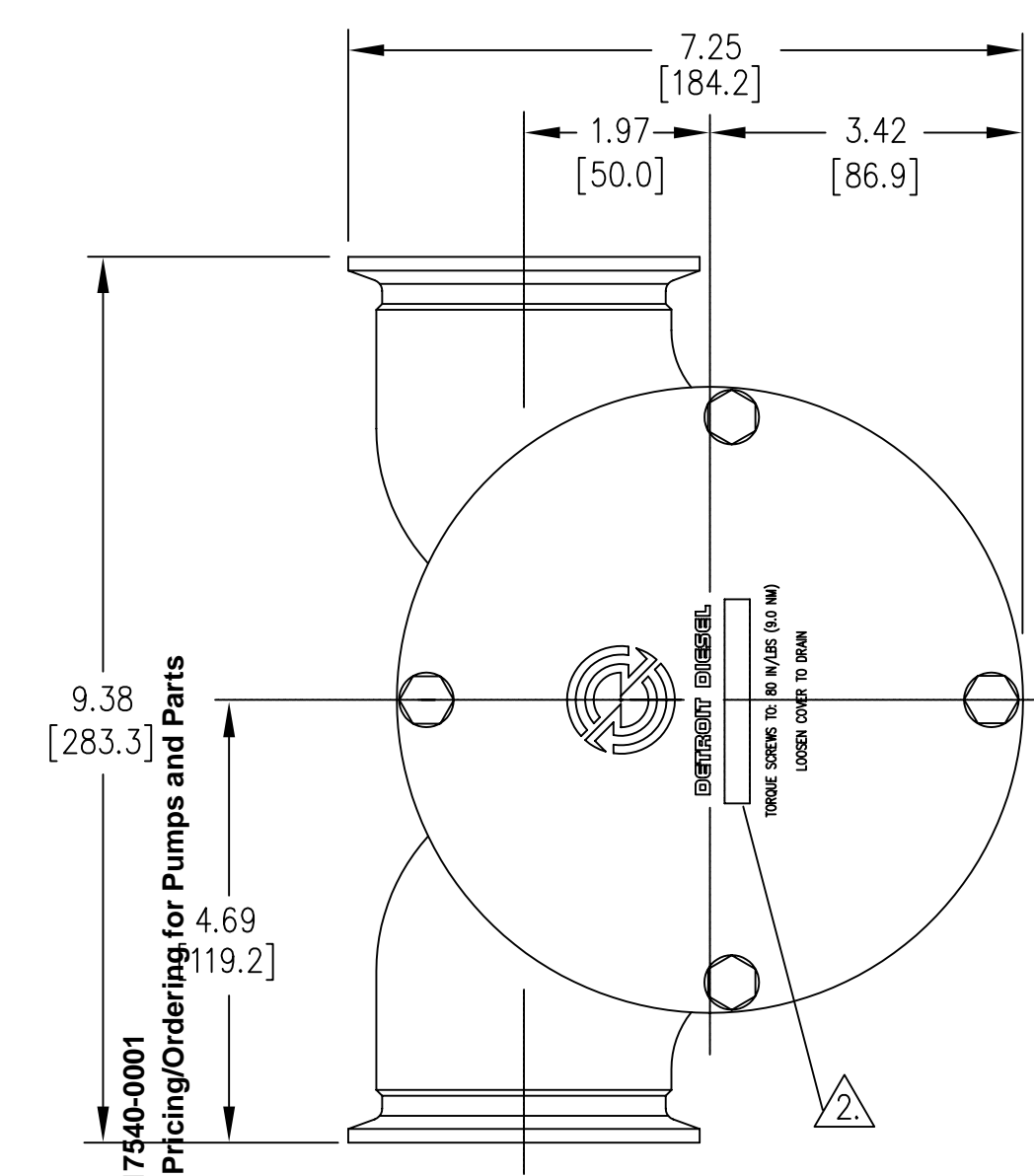
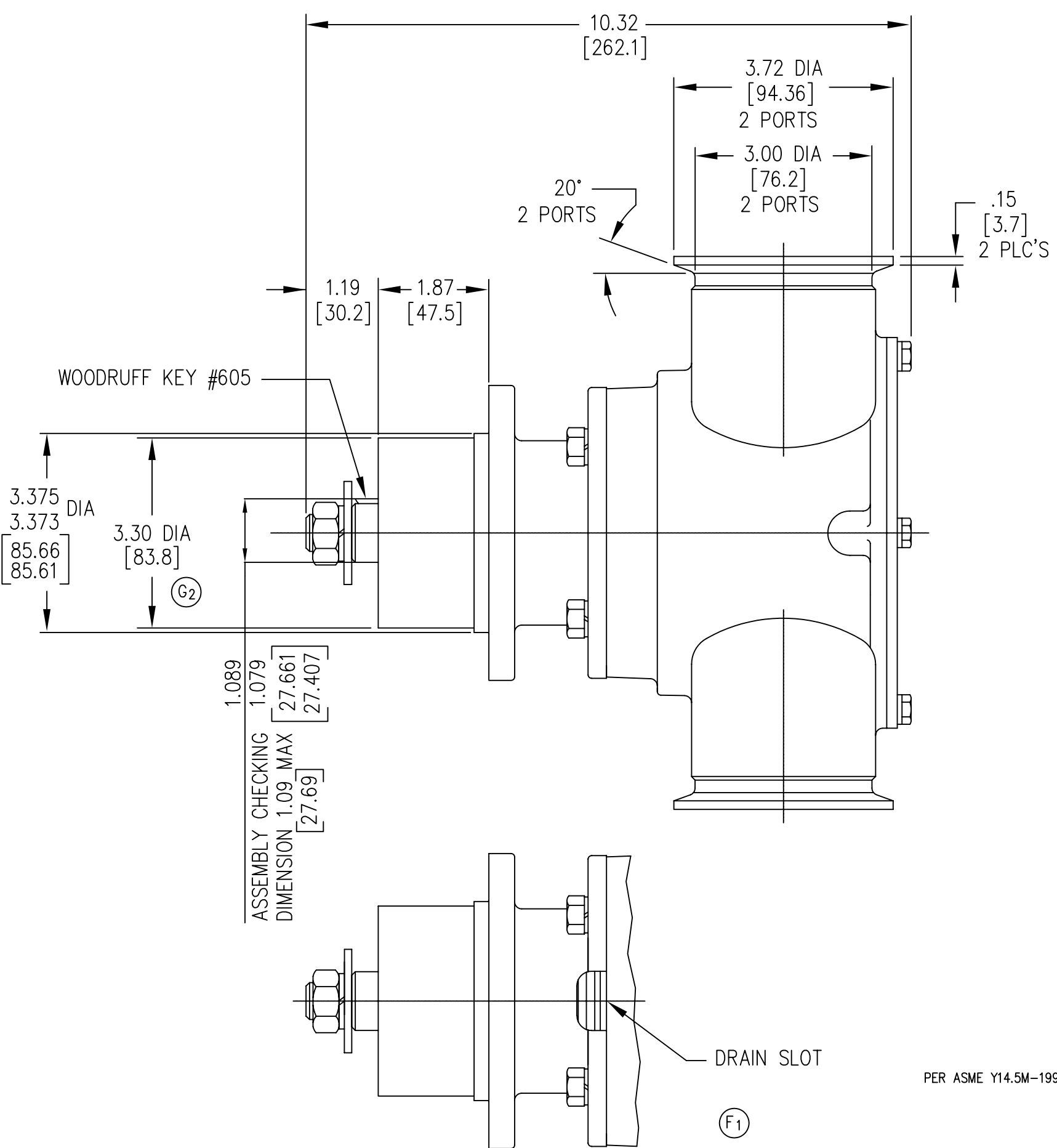
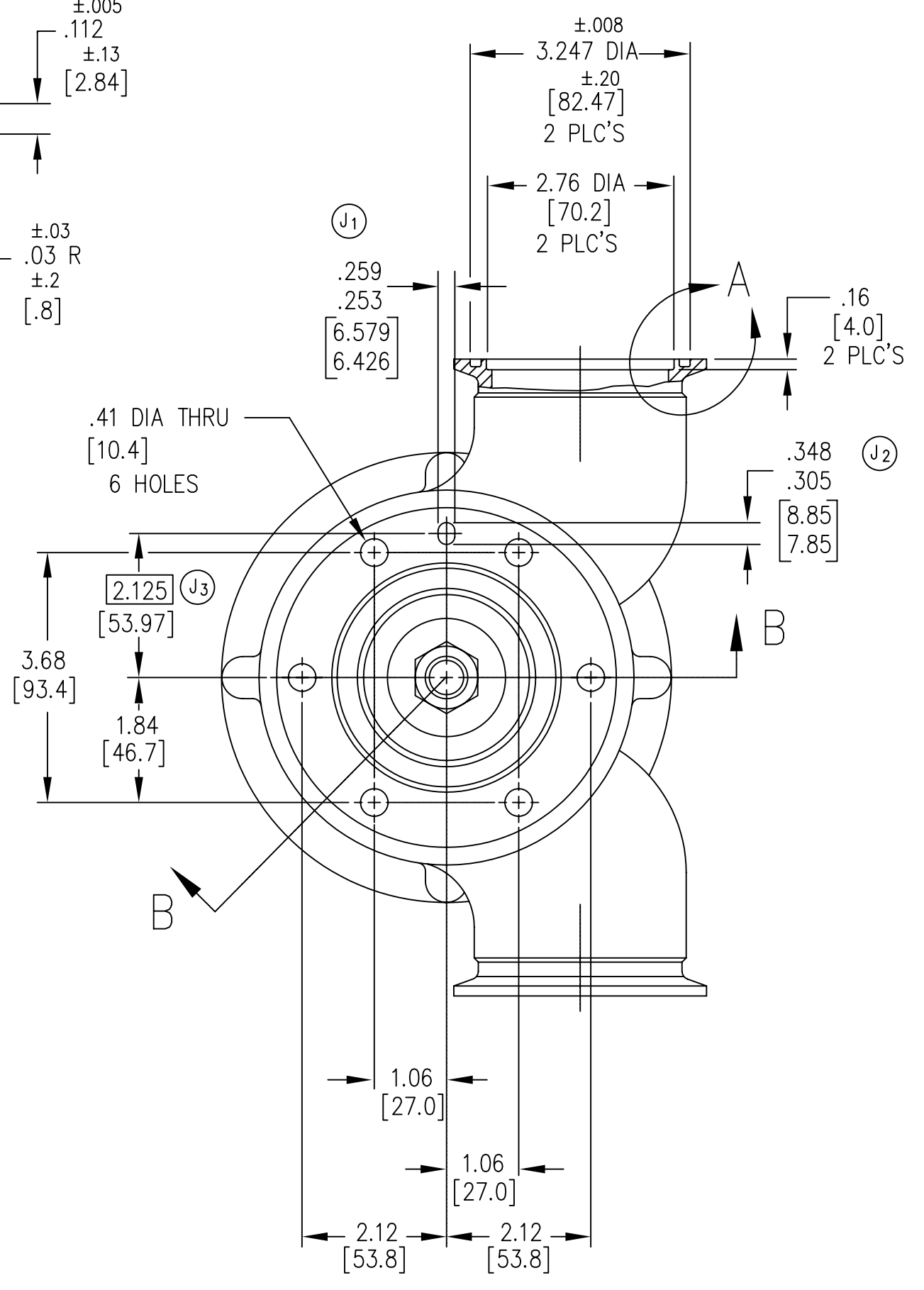
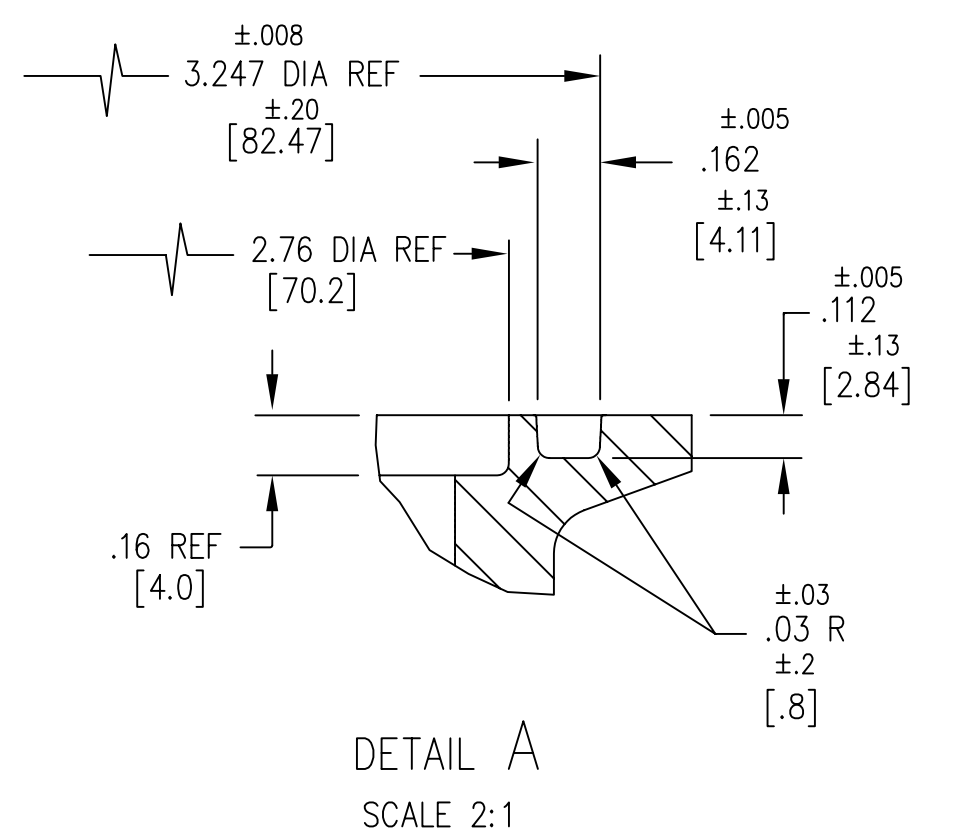
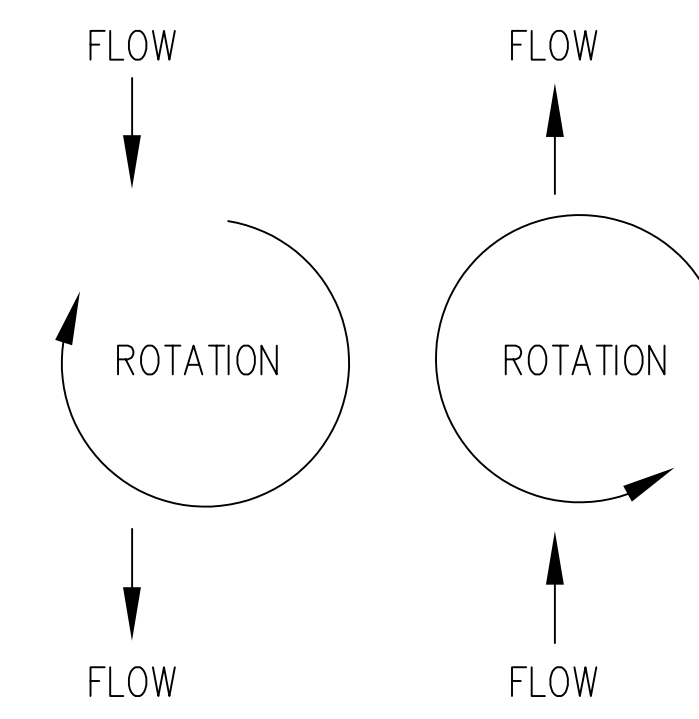


ITEM	PART NO.	DESCRIPTION	QTY
(L1)	1	17531-8000 BODY - CASTING	1
	1	17531-6000 BODY - MACHINING	REF
	2	14303-8000 BEARING HOUSING - CASTING	1
(G1)	2	14304-0001 BEARING HOUSING - MACHINING	REF
	3	18786-0211 IMPELLER	1
	4	18785-6001 CAM LINER	1
	5	18784-6000 END COVER	1
	6	17536-6000 SHAFT	1
	7	18787-6000 WEAR PLATE	1
	8	92000-6002 O-RING	1
	9	92000-1372 O-RING	1
	10	92000-6260 O-RING	2
	11	96080-6371 SEAL, MECHANICAL	1
	12	SP2701-54 SEAL, LIP	1
	13	17969-6000 SEAL, SPLINE	1
	14	92601-0470 BEARING, ROLLER	1
	15	92600-0534 BEARING, BALL	1
	16	SP1701-244 RETAINING RING	1
	17	91700-6001 RETAINING RING	1
	18	91402-6318 KEY, WOODRUFF	1
	19	SP1112-0289 PIN, DOWEL	1
(E1)	20	91091-0010 SCREW, HEX HD 3/8-16 x 7/8 LONG	4
	21	SP1106-0070 SCREW, HEX HD 1/4-20 x 5/8 LONG	4
	22	SP1085-10 NUT, HEX 5/8-18	1
(K1)	23	91613-6010 WASHER, FLAT	1
	24	91603-0090 WASHER, FLAT 1/4	4
	25	SP1608-01 WASHER, SPLIT LOCK 5/8	1
	26	91605-0091 WASHER, SPLIT LOCK 3/8	4



REV	DESCRIPTION	ECO NO	BY	DATE	CHK	DATE	APVD	DATE
D1	REVISED & REDRAWN	498	HV	4-22-99	JS	5-6-99	JS	5-7-99
D2	RELEASE AT M-41	"	"	"	"	"	"	"
E1	ITEM 20, WAS 93005-0148	601	HV	5-21-99	JN	5-21-99	JS	5-21-99
F1	ADDED VIEW TO SHOW DRAIN SLOT	687	HV	7-20-99	JN	7-20-99	NS	7-20-99
G1	IT 2 WAS 14304-0000	719	JN	8-10-99	VM	8-10-99	VM	8-10-99
G2	3.30 DIA ADDED	"	"	"	"	"	"	"
H1	RELEASE AT M-60	751	JN	9-1-99	"	9-1-99	JS	9-1-99
J1	ADDED .259/253 [6.579/6.416]	796	HV	10-5-99	NS	10-5-99	NS	10-5-99
J2	ADDED .348/.305 [8.85/7.85]	"	"	"	"	"	"	"
J3	ADDED 2.125 [53.97]	"	"	"	"	"	"	"
K1	ITEM 23, 91613-6010 WAS 6466-0000	1444	HV	1-19-01	NS	1-19-01	NS	1-19-01
L1	ADDED 17531-8000, BODY - CASTING TO ITEM 1	1826	HV	1-11-02	VM	1-12-02	VM	1-12-02
M	SEE ECN	12151	BNS	2-7-03	BNS	2-7-03	BNS	2-7-03
N	TORQUE FOR ITEM 22 WAS 24-30 FT-LBS	ECN12296	J N R	5/9/03	"	"	"	"
P	DIMENSION AND CHECKING DIM OVER KEY ADDED	ECN13127	BNS	19/12/03	"	"	"	"



- NOTES: UNLESS OTHERWISE SPECIFIED.
- BEFORE ASSEMBLY OF PUMP LUBRICATE IMPELLER BORE, SEAL HOUSING & BEARING HOUSING AS REQUIRED.
 - MARK END COVER, ITEM 5 WITH DDC PART NO. 23525200.
 - DIMENSIONS IN [] ARE IN MILLIMETERS.

TORQUE REQUIREMENT	
ITEM	REQUIRED TORQUE
20	13-15 FT-LBS [17.6-20.3 N-M]
21	75-80 IN-LBS [8.5-9.0 N-M]
22	(HAND TIGHT ONLY)

UNLESS OTHERWISE SPECIFIED ALL DIMENSIONS ARE IN INCHES ALL DIMENSIONS AND TOLERANCING		TOLERANCES ARE: FRACTIONS = ±1/32 DECIMALS .XX = ± XXX = ± ANGULAR = ±		MATERIAL SPEC		<input checked="" type="checkbox"/> JABSCO COSTA MESA, CA <input type="checkbox"/> FLOJET Foothill Ranch, CA	
THIS DOCUMENT CONTAINS PROPRIETARY INFORMATION OF ITT INDUSTRIES. THIS DOCUMENT IS ISSUED IN STRICT CONFIDENCE AND SHALL NOT BE DISCLOSED TO A THIRD PARTY OR USED FOR MANUFACTURE, PRODUCTION OR PROCUREMENT WITHOUT THE EXPRESS WRITTEN PERMISSION OF ITT INDUSTRIES.		APPROVALS DRAWN BY: H. WJ CHECKED BY: J.R.S. APVD BY: J.R. SMITH		DATE 4-22-99 5-6-99 5-7-99		TITLE ENGINE COOLING PUMP SIZE: COMPUTER FILE NO. 17540-0001 DWG NO. 17540-0001 SCALE: 1/2 & NOTED SHEET 1 OF 1	

Jabscopumps.com - Click here for Pricing/Ordering for Pumps and Parts

PER ASME Y14.5M-1994