



**Model 37220-1010**

## TOPSIDER GALLEY PUMP

### INSTALLATION INSTRUCTIONS

Pump is completely assembled and needs only to be mounted as follows:

1. Drill 7/8" hole in desired location, well above water supply tank to avoid syphon action.
2. Remove nut and lock washer from pump tail piece, and extend tail piece through drilled hole. Reinstall washer and nut, do not tighten more than required to hold faucet firmly.
3. Connect plumbing directly to the 1/2" threaded (QEST†) type tail piece or use 1/2" barbed hose adaptor (provided).

NOTICE: When pumping, pull and push in-line with pump cylinder. Side loads to the body should be avoided for efficient long-life operation.

### SERVICE INSTRUCTIONS

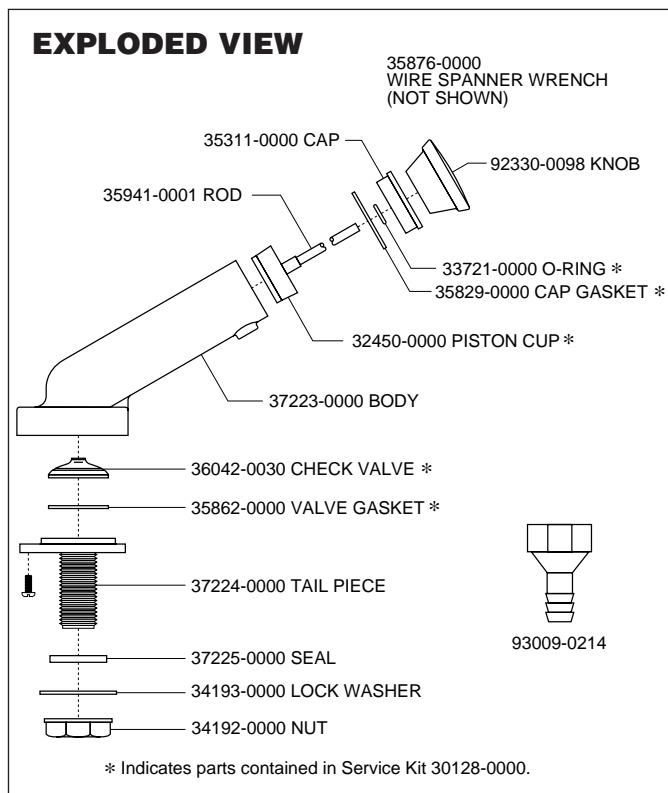
Pump may be serviced, cleaned and drained as follows:

1. Pump may be completely disassembled for cleaning, service and draining.
2. To remove piston assembly, unthread top cap using wire spanner wrench and pull assembly from body.
3. To replace O-ring, remove knob, top cap and pick damaged O-ring from groove in brass bushing molded into cap. Install new O-ring and replace cap assembly being careful not to cut O-ring with shaft threads.

† QEST is a registered trademark of U.S. Brass.



**Model 37220-1010**



Jabsco



**ITT Industries**  
Engineered for life

PumpAgents.com - buy pumps and parts online

THE PRODUCT DESCRIBED HEREIN IS SUBJECT TO THE JABSCO ONE YEAR LIMITED WARRANTY, WHICH IS AVAILABLE FOR YOUR INSPECTION UPON REQUEST.

---

For technical advice or service please take your pump into your local pump service center.  
To order pump or parts or for pricing please go to the following links :

[Jabsco Pumps Home >>](#)

[Jabsco Pumps stock list >>](#)