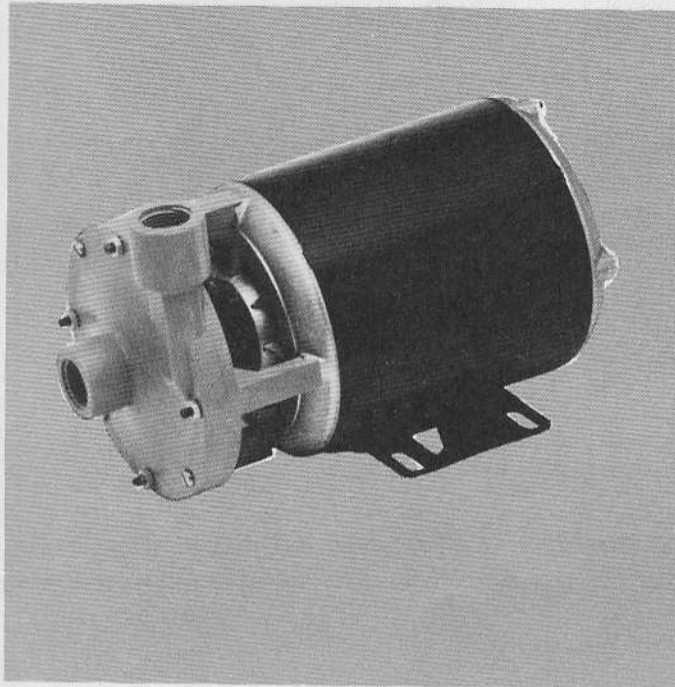


# JABSCO® PUMPS

Centrifugal Series

## MODEL: 17890-0001

Product Data



MODEL 17890-0001

### DESIGN FEATURES

- Pump Material: **Plastic - CPVC/Epoxy**
- Impeller Design: **Semi-Open**
- Shaft Mechanical Seal: **Viton, Carbon/Ceramic Face**
- Suction Port Connection: **3/4" NPT or 1 1/2" Slip-On Hose**
- Discharge Port Connection: **3/4" NPT or 1 1/2" Slip-on Hose**
- Shaft: **Epoxy Stub Shaft**
- Maximum Temperature: **180°F (82.2°C)**
- Motor: **115 V., A.C., 1/3 H.P., 3450 RPM, 60 Hz, 1 Phase thermal overload protection, totally enclosed, non-vent, three prong grounded plug**
- Weight: **17½ lbs. (8 kgs.)**

MODEL 17890-0001

### APPLICATION AND OPERATING INSTRUCTIONS

**INDUSTRIAL** — Pump designed for transfers, circulation, filtration, and drainage. Plastic body is corrosion resistant for handling corrosive fluids, photo chemicals, and many others.

**OEM** — Air conditioning units, laundry equipment, ice makers, vending machines, laboratory equipment, and many others.

1. **INSTALLATION** — Pump is a non self-priming centrifugal design. Flooded suction installa-

tion is recommended. Rotation is clockwise (viewed from motor end).

2. **PRIMING** — Pump must be primed before starting. Do not run dry. Damage will result.

3. **CAUTION** — Use only plastic fittings in discharge ports.

4. **LOCATION** — Pump inlet should be located below liquid surface. Keep suction and discharge line as free of elbows and valves

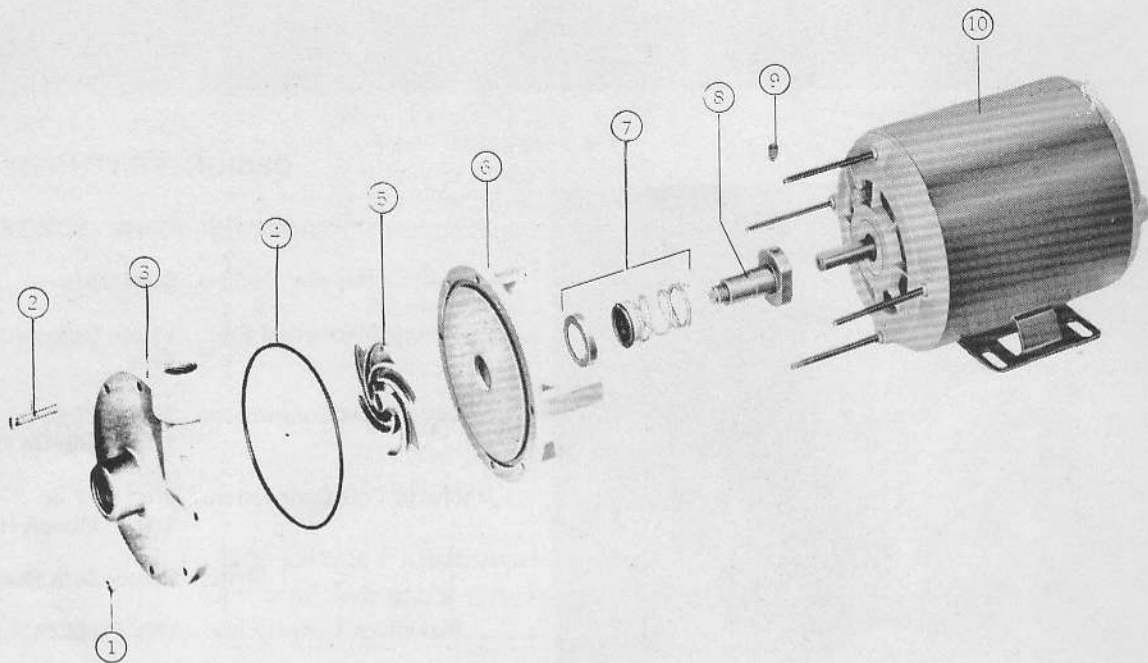
as practical to obtain maximum performance.

5. **SUCTION AND DISCHARGE LINES** — Both should be supported independent of pump. Suction line should be air tight. Discharge lines should be designed with minimum number of fittings and bends to reduce head loss from friction.

6. **PRIMING** — If there is some suction lift, a flap type foot valve can be used to facilitate priming.

## JABSCO PRODUCTS ITT

EXPLODED VIEW



PARTS LIST

Key	DESCRIPTION	Qty. Req.	Part No.
1	Nut, Hex	4	94000-0040
2	Screw, Body	4	93950-0050
3	Pump Body	1	17884-0000
4	"O" Ring	1	92000-1120
5	Impeller	1	17885-0009
6	Seal Housing	1	17886-0000
7	Seal, Shaft	1	96080-0360
8	Shaft-Stub	1	17887-0000
9	Set Screw	2	96091-0090
10	TENV Motor	1	93004-2410

---

For technical advice or service please take your pump into your local pump service center.  
To order pump or parts or for pricing please go to the following links :

[Jabsco Pumps Home >>](#)

[Jabsco Pumps stock list >>](#)