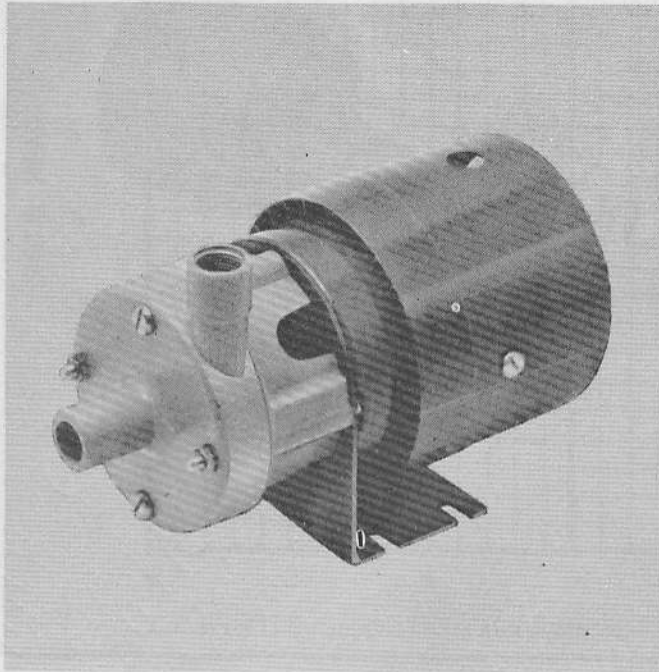


JABSCO® PRODUCTS*Centrifugal Series***MODEL: 17860-0000***Product Data***MODEL 17860-0001****DESIGN FEATURES**

Pump Material:	Plastic - CPVC
Impeller Design:	Semi-open
Shaft Mechanical Seal:	Viton, Carbon / Ceramic Face
Suction Port Connection:	3/4" O.D. for Slip-On hose connection
Discharge Port Connection:	3/8" NPT Internal & 3/4" O.D. for Slip-On hose connection
Shaft:	316 Stainless Steel
Maximum Temperature:	180° F
Motor:	115 V., A.C., 1/40 H.P., 3000 RPM, 60 cycle thermal overload protection, open type enclosure, Class "A" insulation. Three prong grounded plug

MODEL 17860-0000

VARIATIONS AVAILABLE

Model	Description	Part No.
17860-0001	T.E.F.C. Motor Motor only	93004-2420

APPLICATION AND OPERATING INSTRUCTIONS

INDUSTRIAL—Pump designed for transfers, circulation, filtration, and drainage. Plastic body is corrosion resistant for handling corrosive fluids, photo chemicals and many others.

OEM—Air conditioning units, laundry equipment, ice makers, vending machines, laboratory equipment, and many others.

- 1. INSTALLATION**—Pump is a *non* self-priming centrifugal design. Flooded suction installation is recommended. Rotation is clock-wise (viewed from motor end).
- 2. PRIMING**—Pump must be primed before starting. Do not run dry. Damage will result.
- 3. CAUTION**—Use only plastic fittings in discharge port.
- 4. LOCATION**—Pump inlet should be located below liquid surface. Keep suction and discharge

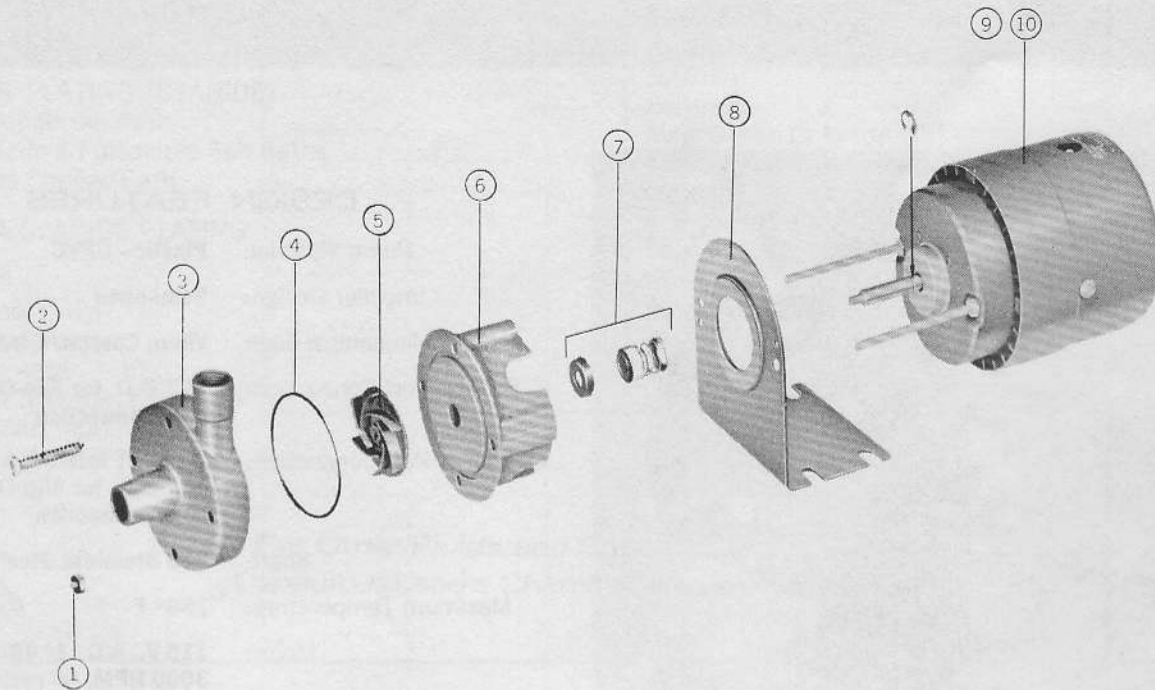
line as free of elbows and valves as practical to obtain maximum performance.

- 5. SUCTION AND DISCHARGE LINES**—Both should be supported independent of pump. Suction line should be air tight. Discharge lines should be designed with minimum number of fittings and bends to reduce head loss from friction.
- 6. PRIMING**—If there is some suction lift, a flap type foot valve can be used to facilitate priming.

JABSCO PRODUCTS **ITT**

F.3019 8/72

EXPLODED VIEW



PARTS LIST

Key	DESCRIPTION	Qty. Req.	Part No.
1	Nut, Hex	2	94000-0050
2	Screw	2	93950-0060
3	Pump Body	1	17859-0000
4	"O" Ring	1	92000-0990
5	Impeller	1	17865-0000
6	Seal Housing	1	17858-0000
7	Seal, Shaft	1	96080-0370
8	Mounting Bracket	1	17864-0000
9	Motor-Open Enclosure	1	93004-2440
10	Motor totally enclosed fan cooled	1	93004-2420

For technical advice or service please take your pump into your local pump service center.
To order pump or parts or for pricing please go to the following links :

[Jabsco Pumps Home >>](#)

[Jabsco Pumps stock list >>](#)