


**JABSCO**

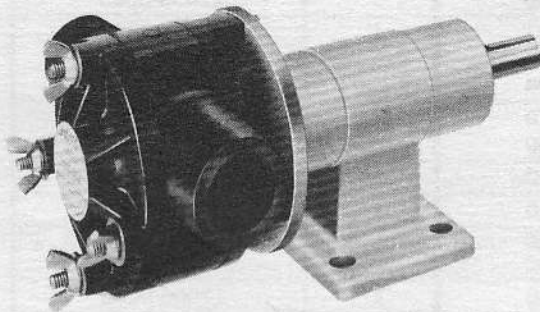
## Models: 17590-SERIES 17430-SERIES

### SELF-PRIMING PUMPS

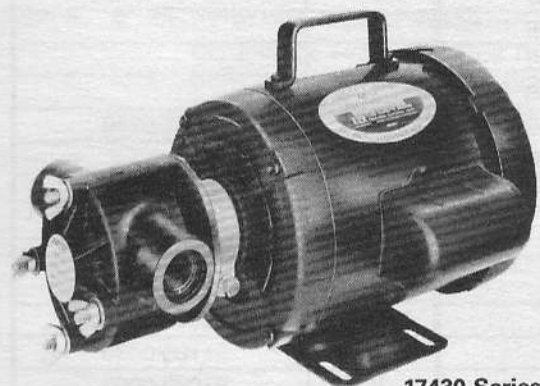
#### FEATURES

Pump Series No.:	<b>17590-Series Pedestal Mounted 17430-Series Motor Pump Unit</b>
Body:	<b>Glass-filled Epoxy</b>
Impeller:	<b>Neoprene, Nitrile or Viton*</b>
Shaft Seal:	<b>Mechanical, Carbon-on-Ceramic, Nitrile</b>
Ports:	<b>1/2" NPT Internal</b>
Shaft:	<b>Corrosion Resistant Steel with Epoxy Drive Sleeve in Contact with Fluid</b>
Motor:	<b>115 Vac, Single Phase, 60Hz, 1/2 HP, 1725 RPM, TEFC, overload protected, capacitor start. Three-pronged grounded plug.</b>
Weight:	<b>17590-Series 7-1/2 lb (3,4 kg) 17430-Series 33-1/2 lb (15,2 kg)</b>

Models: 17590-SERIES, 17430-SERIES



17590-Series



17430-Series

#### ⚠ MOTOR WARNING



MOTOR CAN SPARK.  
EXPLOSION & DEATH  
CAN OCCUR.  
DO NOT USE WHERE  
FLAMMABLE VAPORS  
ARE PRESENT.

Designed for transfers, circulation, spill returns, filtration and filling line use. Easily handles pure solutions, foaming liquids, emulsions, suspended solids, gels and ferments. Because the plastic pump is resistant to corrosion and metallic contamination, it is widely used for pumping photo chemicals, plating compounds, lab solutions, pharmaceuticals, cosmetics, weak acids, alkalies, liquid fertilizers, insecticides, dyes, detergents, waxes and many more. There is no pump metal part in contact with the fluid. See the JABSCO Pump Chemical Resistance Table which has been prepared to help you select the most suitable impeller and pump material.

- INSTALLATION** – Pedestal Mounted Pump may be mounted in any position. The rotation of the pump shaft determines the location of the pump's intake and discharge ports. Refer to end cover. Before starting, rotate the pump shaft in the direction of the operating rotation.
- DRIVE** – Belt or direct with flexible coupling for pedestal mounted unit. Clearance should be left between drive shaft and pump shaft when installing coupling. Always mount pump and align drive shaft before tightening the coupling set screw.
- SPEEDS** – Pedestal Mounted Pump - 100 RPM to the maximum shown in the performance table. For longer pump life, operate at lowest possible speeds.
- SELF-PRIMING** – Primes at low or high speeds. For vertical dry suction lift of 15 feet, a minimum of 1750 RPM is required. Pump will produce suction lifts up to 22 feet when wetted. **BE SURE SUCTION LINES ARE AIRTIGHT OR PUMP WILL NOT SELF PRIME.**
- RUNNING DRY** – Unit depends on liquid pumped for lubrication. **DO NOT RUN DRY FOR MORE THAN 30 SECONDS.** Lack of liquid will damage the impeller and plastic components.
- DISCHARGE LINE** – When transferring liquids further than 25 feet, use one size larger discharge line than discharge opening.
- NOTICE** – If corrosive fluids are handled, pump life will be prolonged if flushed with water after each use or after each work day. Consult ITT Jabsco Chemical Resistance Table (available from the factory) or the factory for further information.
- PRESSURES** – For continuous operation, pressure should not exceed 20 psi.
- TEMPERATURES** – Neoprene-45° to 180°F (7° to 81°C),  
Nitrile -50° to 180°F (10° to 81°C),  
Viton-60° to 180°F (15° to 82°).
- SPARE PARTS** – A spare impeller and seal should be kept on hand to eliminate downtime.

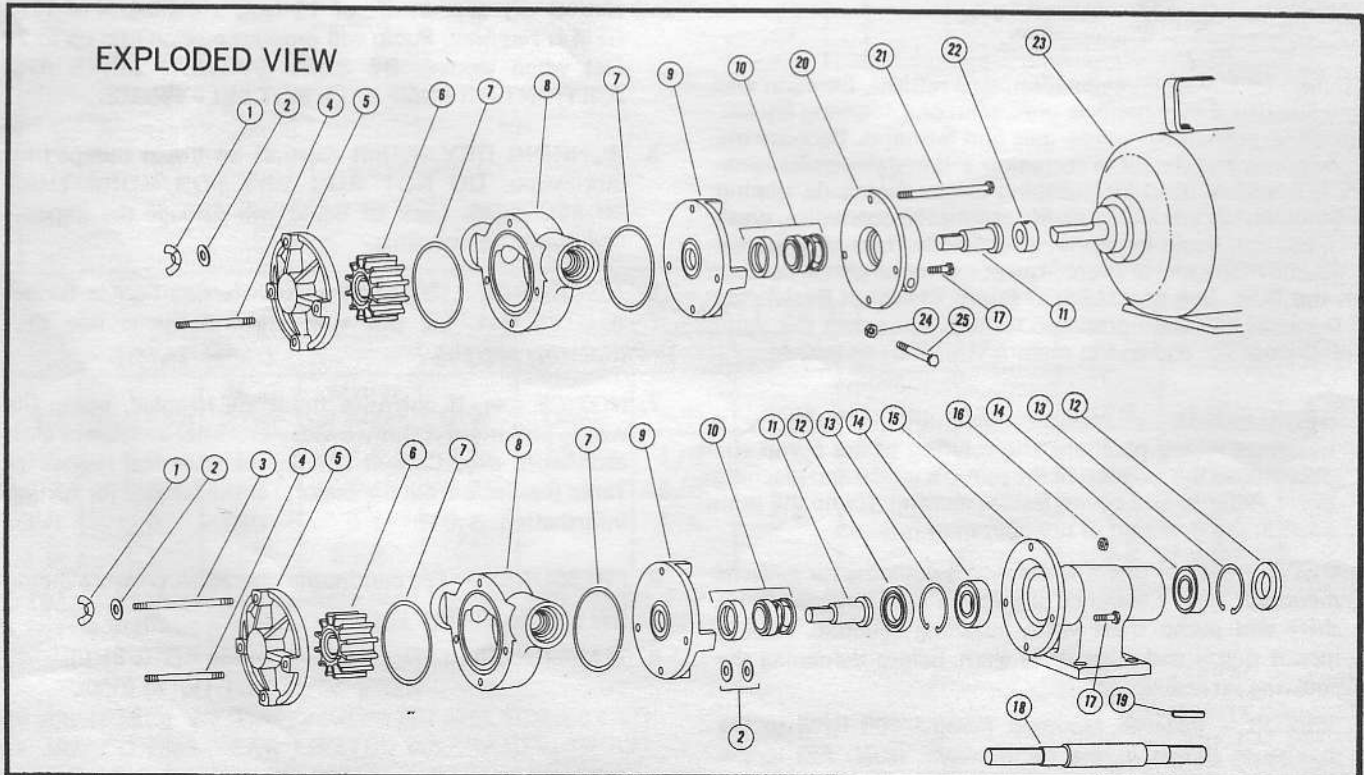
Viton\* is a trademark of ICI, DuPont de Nemours and Company

PARTS LIST

KEY	DESCRIPTION	PEDESTAL VERSION MODEL 17590		MOTOR PUMP UNITS MODEL 17430	
		QTY. REQ.	PART NO.	QTY. REQ.	PART NO.
1	WING NUT	4	91107-0030	4	91107-0030
2	WASHER	12	91601-0040	4	91601-0040
3	STUD	2	91090-0110		
4	STUD	2	91090-0040	2	91090-0040
5	END COVER	1	17434-0000	1	17434-0000
6	IMPELLER NEOPRENE NITRILE VITON	1	14281-0001 14281-0003 14806-0004	1	14281-0001 14281-0003 14806-0004
7	O-RING NITRILE VITON	2	92000-0310 92000-0880	2	92000-0310 92000-0880
8	BODY	1	14924-0000	1	14924-0000
9	SEAL HOUSING	1	14533-0010	1	14533-0010
*10	SEAL ASSEMBLY, STANDARD CARBON/CERAMIC, VITON	1	96080-0280 96080-0290	1	96080-0280 96080-0290
11	DRIVE SLEEVE	1	17006-0000	1	17006-0000
12	BEARING SEAL	2	496-0000		
13	RETAINING RING	2	18716-0000		
14	BALL BEARING	2	92600-0120		
15	BEARING HOUSING	1	1269-0000		
16	HEX NUT	2	91085-0050		
17	BOLT	2	91095-0240	2	91095-0240
18	SHAFT	1	17597-0000		
19	KEY	1	91402-0110		
20	ADAPTOR			1	17433-0000
21	BOLT			2	91094-0120
22	COLLAR			1	98022-0700
23	MOTOR			1	93004-1850
24	NUT - ADAPTOR			1	91105-0030
25	BOLT - ADAPTOR			1	91095-0090

\*Available as optional part: Seal Assembly  
Carbon/Carpenter 20 with Neoprene 17221-0050  
Carbon/Carpenter 20 with Viton 17221-0040

PUMP HEAD ONLY FOR MOTOR PUMP UNIT:  
w/NEOPRENE IMPELLER 17438-0001  
w/NITRILE IMPELLER 17438-0003  
w/VITON IMPELLER 17438-0004



---

For technical advice or service please take your pump into your local pump service center.  
To order pump or parts or for pricing please go to the following links :

[Jabsco Pumps Home >>](#)

[Jabsco Pumps stock list >>](#)