

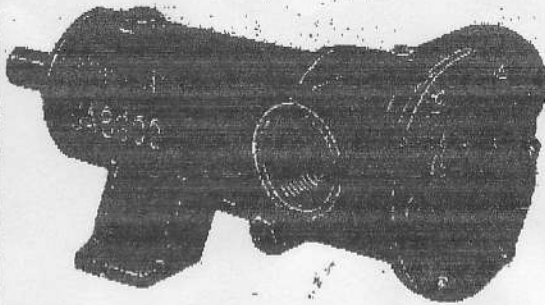
# Jabscopumps

# Technical Data

## Model 10550-200

### DESIGN FEATURES

Body	Bronze construction
Pedestal	Cast iron
Impeller	Jabscop neoprene compound
Shaft	Stainless steel
Shaft Seal	Mechanical Seal—renewable ceramic seal seat
Wearplate	Replaceable
Bearings	Ball bearings
Ports	$\frac{1}{2}$ " BSP Internal
Weight	Approximately 4 $\frac{1}{2}$ lb (2kg)



### Variations incorporated from unit described above

#### Model

10550-205 Fitted  $\frac{1}{2}$  cam reduced flow.

*Note:* Models are available with Nitrile impellers for a wide range of oils—soluble, lubricating, and machine cutting. Not recommended for Toluene, Petrol, Benzene or other high fraction petroleum products.

### Typical Applications

#### Marine

engine cooling  
pumping bilges  
washing down decks and docks

#### Industrial

circulating and transferring liquids  
velocity-mixing  
transferring soap, liquors, pastes, glues, glycerine, lotions and brine

#### Farm

pumping water for stock and poultry houses and booster pumping

#### Plumbing and home

pumping out flooded basements, cesspools, sumps and many other uses.

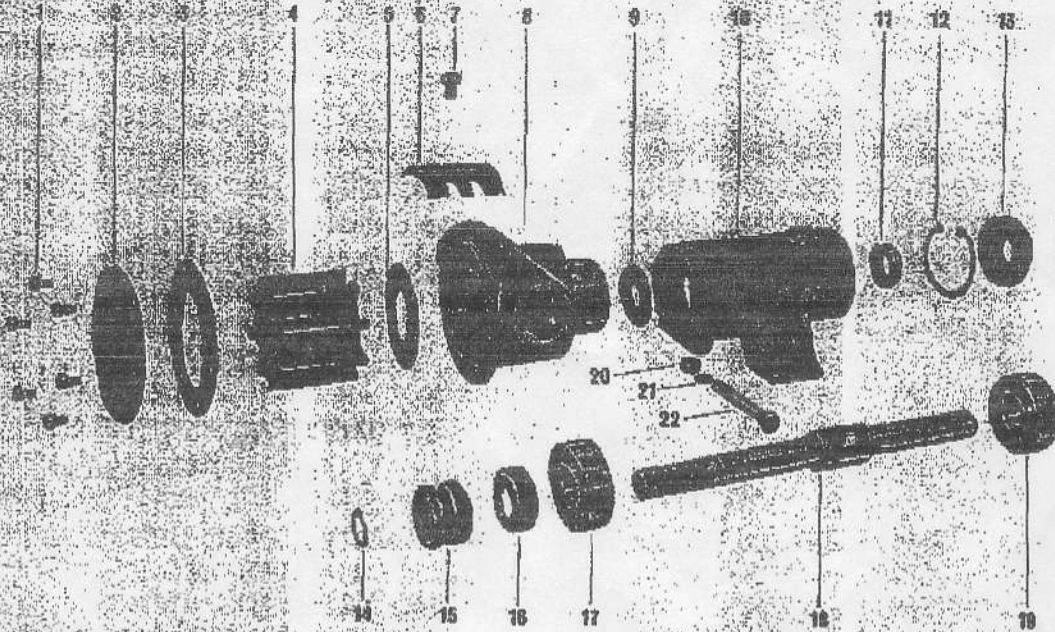
	PERFORMANCE CHART															
	TOTAL HEAD WATER				500 RPM		750 RPM		1,000 RPM		1,500 RPM					
	Feet of Water	Meters of Water	ft. per sq. in.	kg. per cm <sup>2</sup>	HP	Imperial Gallons per min	Litres per min	HP	Imperial Gallons per min	Litres per min	HP	Imperial Gallons per min	Litres per min			
Standard Full Cam	10	3.05	4.8	0.3	1/8	2.7	12.3	1/8	4.25	19.3	1/4	5.5	25.0	1/2	6.25	37.5
	20	6.1	9.7	0.6	1/8	2.5	11.4	1/5	4.0	18.2	1/4	5.25	24.0	1/2	6.0	35.0
	30	9.15	13.0	0.9	1/8	2.0	9.0	1/8	3.75	17.0	1/3	4.75	21.6	1/2	7.5	35.0
	50	15.25	21.6	1.5									1/2	6.2	28.0	
Half Thickness Cam	10	3.05	4.8	0.3	1/8	1.5	6.8	1/8	2.6	12.0	1/4	3.5	16.0	1/2	5.5	25.0
	20	6.1	9.7	0.6	1/8	1.25	5.7	1/8	2.2	10.0	1/4	3.0	13.5	1/3	6.0	23.0
	30	9.15	13.0	0.9						1/4	2.5	11.5	1/3	4.25	19.0	
	40											1/2	3.5	16.0		

Performance stated is typical for new pump with Standard Impeller pumping water at ambient temperature. Alternative impeller materials can affect performance. Consult factory or distributor for advice.

# Exploded View and Parts List

# Technical Data

## EXPLODED VIEW



Insist on genuine Jabsco parts made only by the original and world's leading manufacturer of self-priming flexible neoprene impeller pumps.

PARTS LIST			
Key	Description	Qty	Part No.
1	End Cover Screw	6	SP1002-02
2	End Cover		
	Model 10550-200	1	10555-200
	Model 10550-205	1	10555-205
3	Gasket	1	3298
4	Impeller	1	1210
5	Wearplate	1	9996
6	Cam		
	Model 10550-200	1	490
	Model 10550-205	1	10336
7	Cam Screw		
	Model 10550-200	1	SP1003-01
	Model 10550-205	1	SP1003-09
8	Body	1	10554-200
9	Slinger	1	3286
10	Bearing Housing	1	10567
11	Seal (Bearing)	1	SP2703-02
12	Retaining Ring	1	SP1700-248
13	Seal (Bearing)	1	SP2701-15
14	Shaft Retaining Ring	1	SP1700-62
15	Primary Seal	1	SP6080-07
16	Ceramic Seal Seat	1	SP6022-07
	Seal Seat Cup Rubber	1	9722
17	Ball Bearing	1	SP2601-39
18	Shaft	1	10417
19	Ball Bearing	1	SP2601-39
20	Nut	1	SP1105-03
21	Washer	1	SP1602-06
22	Bolt	1	SP1095-09
23	Bearing Spacer	1	9998
24	Shaft Retaining Ring (not shown)	1	SP1700-249

SERVICE KIT	
Pump model number	Service kit number
10550-200	SK239
10550-205	SK239
Service kit includes: Impeller Gasket End Cover Screws Seal, Seal Seat and Cup Rubber Retaining Ring	