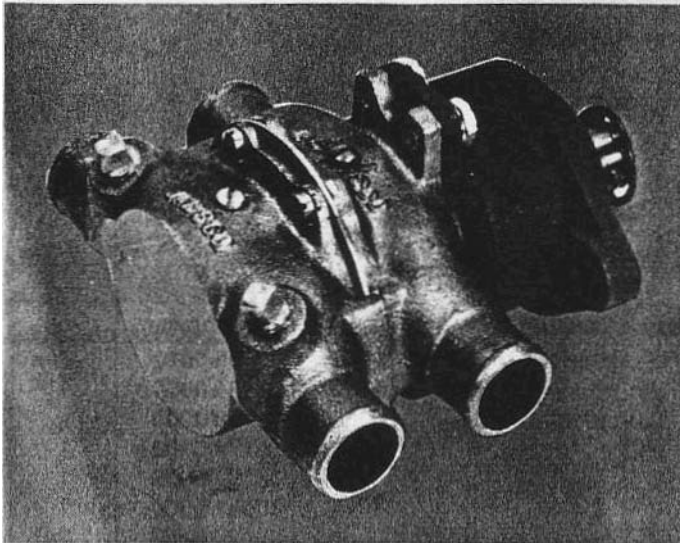


JABSCO® PUMPS*Self-Priming Pumps***MODEL: 10190-0011***Product Data*

MOOEL: 10190-0011

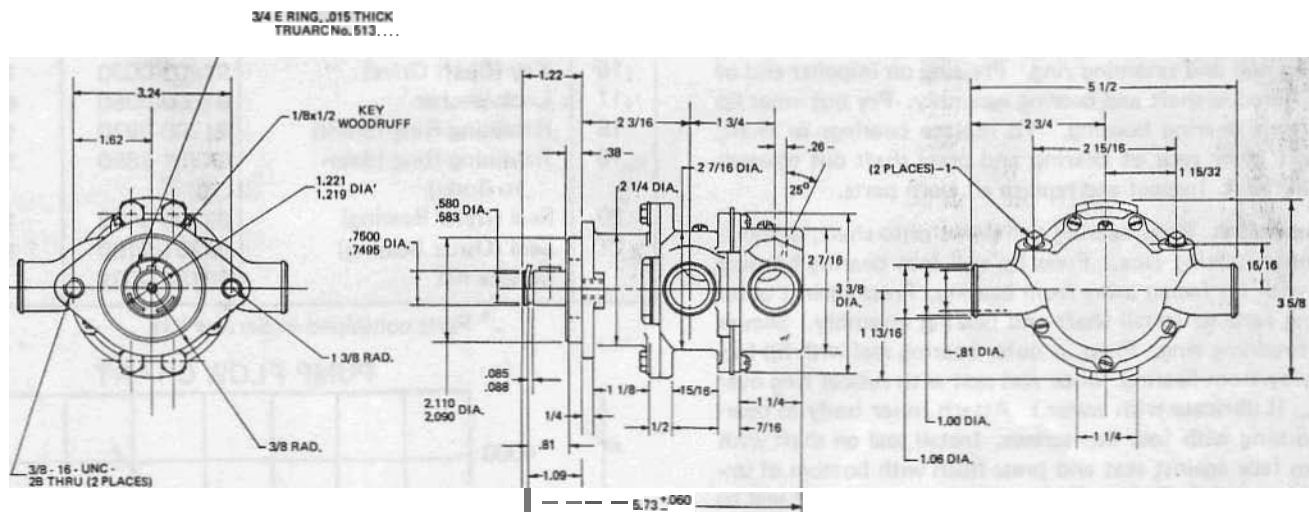
DESIGN FEATURES

Body: Bronze
 Impeller: **Jabasco** Neoprene Compound
 Shaft: Bronze
 Shaft Seal: Carbon Ceramic **Face-Type**
 Ports: 1" Hose Connections
 Weight: Approx. Shipping Wt, **6½** lb.

APPLICATION

Marine Engine Cooling

For **Chrysler** Engines
 Series 318 **A-B-C**, 383, 413
 M225A, 0; MH225D7 M318A,
 B, C, M383B

DIMENSIONAL DRAWING**INSTALLATION INSTRUCTIONS**

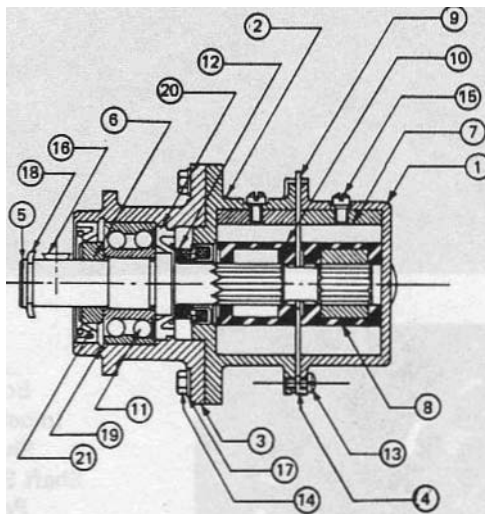
Mount pump on engine bracket. Make sure pump pulley is aligned with drive pulley and snap ring securely in place. Tighten belt by moving bracket. Allow about 1/2 movement in belt when tightened. Do not overtighten, connect inlet and **outlet** hoses, clamp **securely** on ports.

OPERATING INSTRUCTIONS

Pump will self prime at low or high speeds. Make sure scoop and inlet line are clear and all connections are **tight**. Do not run pump dry for more than 30 **seconds**. Lack of water flow may damage impeller. To drain pump, **loosen** end cover screws.

JABSCO PRODUCTS

EXPLODED VIEW



MODEL: 10190-0011

SERVICE INSTRUCTIONS

Impeller Replacement: Remove outer body and gasket. Pull impeller out by grasping hub or blades with pliers. Remove **wearplate, gasket** and inside impeller. Replace **impeller (10 blade), gasket** and **wearplate**. Insert **second** impeller (12 blade) in **outer** body. place gasket on body. Push assembly onto shaft, lining up splines. A light coating of grease in impeller **bores** will aid **priming** on dry start up. (Use correct Jabsco gasket. A thicker or thinner gasket may cause **impeller** damage.) Standard gasket is .010" thick.

MAJOR REPAIR

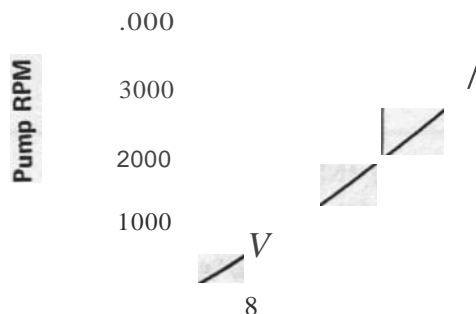
Remove outer body, impeller and wearplate from pump. Remove inner impeller from inner body, loosen four cap screws and remove inner body **from** bearing housing. Press out carbon **face** seat from inner body. Remove seal seat and seat gasket from shaft. Remove E clip, pulley, key, outer bearing seal and retaining ring. Pressing on impeller end of shaft, remove shaft and bearing assembly. Pry out inner **lip** seal from bearing housing. To replace bearings or shaft, support inner race of **bearing** and press shaft out towards impeller end. Inspect and replace all worn parts.

To Assemble: Press bearing and sleeve onto shaft, supporting inner bearing race. Press lip seal into bearing housing bore with lip facing away from **bearing**. Press against outer bearing race to install shaft and bearing assembly. Secure with retaining ring. Press **in** outer bearing seal with lip facing away from bearing. Slide seal seat with rubber **ring** over shaft. (Lubricate with water.) Attach inner body to bearing housing with four cap **screws**. Install seal on shaft with carbon face against seat and **press** flush with bottom of **impeller** bore. CAUTION: Press on outermost edge of seal to prevent damage, lubricate with water. (OO not use oil) OO not mar **nor** scratch **seal** surface. Permatex screw threads, topside of cams and install in body with cam screw. Lubricate impeller bore with a light coat of water pump grease and start impeller (110 blade) into bore with a rotary motion until **splines engage**, then push into bore. Install gasket and divider plate. Push outer impeller (12 blade) into outer body with rotary motion. Place outer gasket in **position on** wearplate. **Secure** outer body. **Tighten** both (2) **cam screws**. Install key, pulley and E **clip**.

Key	Description	Part Number	Qty.
1	Body 10(Outer)	10195-0010	1
2	Body 11(inner)	10194-0000	1
3	Bearing Housing	10178-0000	1
4	Wearplate	10179-0000	1
5	Shaft	10197-0000	1
6	Sleeve	10181-0000	1
7	Cam	490-0000	2
8	Impeller (Outer Body)	121Q.0001	1
9	Gasket 10. B.)	10183-0000	2
10	Impeller (Inner Body)	3085-0001	1
11	Ball Bearing	92600-0060	1
12	Seal Assy. (Shaft)	96080-0080	1
13	Screw (Outer to Inner Body)	91003-0020	5
14	Bolt (Bearing Housing)	91095-0320	1
15	Screw (Cam)	91003-0070	2
16	Key (Shaft Drive)	91491-0030	1
17	Lock Washer	91602-0060	1
18	Retaining Ring (Shaft)	9170Q.2970	1
19	Retaining Ring (Bearing to Body)	91701-1850	1
20	Seal 11(inner Bearing)	9270Q.04BO	1
21	Seal (Outer Bearing)	92701-0160	1
	Service Kit	90134-0001	

.... Parts contained In Service Kit.

PUMP FLOW CHART



For technical advice or service please take your pump into your local pump service center.
To order pump or parts or for pricing please go to the following links :

[Jabsco Pumps Home >>](#)

[Jabsco Pumps stock list >>](#)