

Please read and save this Repair Parts Manual. Read this manual and the General Operating Instructions carefully before attempting to assemble, install, operate or maintain the product described. Protect yourself and others by observing all safety information. The Safety Instructions are contained in the General Operating Instructions. Failure to comply with the safety instructions accompanying this product could result in personal injury and/or property damage! Retain instructions for future reference. AMT reserves the right to discontinue any model or change specifications at any time without incurring any obligation.

©2015 AMT Pump Company, A Subsidiary of The Gorman-Rupp Company, All Rights Reserved.

Periodic maintenance and inspection is required on all pumps to ensure proper operation. Unit must be clear of debris and sediment. Inspect for leaks and loose bolts. Failure to do so voids warranty.

Centrifugal Laundry Tray Pump

Refer to pump manual 1808-634-00 for General Operating and Safety Instructions.

A Gorman-Rupp Company

DESCRIPTION

This centrifugal laundry tray pump is designed for gravity-feed pumping operations. Unit can handle laundry water or other nonflammable, non abrasive fluids compatible with pump construction. Pump is equipped with mechanical seal (carbon face with Buna-N seal cartridge), cast aluminum body and impeller, and a split-phase motor. This is a manual unit, no controls are supplied. Unit does not come supplied with any type of switch or control device to turn unit on or off.

INSTALLATION

Refer to Figure 1 and proceed as follows:

1. Locate pump as close to the laundry tub as possible. Support the pump and piping adequately to keep pump and piping from being strained.
2. Pitch the piping from tub drain to pump suction to avoid air traps. (Do not use the conventional trap). Keep the pipe-size at least 1 1/4". Use pipe dope to avoid joint leakage. Install necessary piping for pressure switches or any other control devices (not supplied). Follow manufacturer's instructions for their installation.
3. Install a check valve on the discharge side to prevent drain-back.
4. Locate check valve below level of bottom of tub.
5. Wire motor by following wiring diagram on nameplate. It is strongly recommended that this unit is plugged into a GFCI (Ground Fault Circuit Interrupter). Consult your local electrician for installation and availability. Be sure unit is grounded (General Safety Information). If unit is to be controlled by an on and off switch, install at this time.
6. If laundry water from a washer is discharged into the laundry tub, it should be filtered. Filtering can be accomplished many ways. An easy way is by taking an old pair of panty hose, putting one leg into the other, and then putting it on the end of the washer discharge hose with a rubber band. Most of the panty hose should be lying in the laundry tub. Eventually, the panty hose will become full of lint and a hole will develop. The panty hose should then be replaced.
7. Installation is now complete.

NOTE: To prevent accidents, locate motor in a suitable (ventilated) enclosure, or guard all moving parts and ventilation openings.

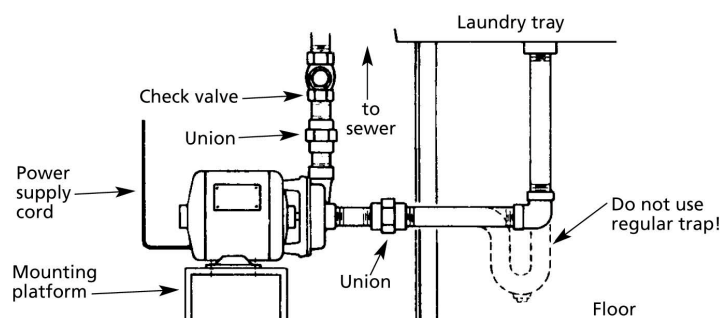


Figure 1 - Typical Installation

OPERATION

Turn unit on by either plugging pump in, turning switch on, or if unit is installed with an automatic device, (not supplied) it will activate itself as well as turn itself off. On units without automatic devices, it is necessary to shut pump off when water stops draining out of the tub (last couple of inches). The pump has become air bound. After a few seconds, when the water has gone down, turn unit on again. The unit may have to be turned on and off a few times to completely drain tub. This is normal. When water has been completely pumped out of the tub, turn pump off immediately.

MAINTENANCE

▲ WARNING

Disconnect from power source before servicing or inspecting the pump for any reason. Failure to do so could result in fatal electrical shock!

MOTOR

Dirt accumulations can cause motor overheating and a fire hazard. Remove dirt accumulations from the motor, especially in and around vent openings by vacuuming.

Periodically inspect the installation. Check for dirt accumulations; unusual noises or vibration; overheating; worn or loose couplings, sheaves and belts; high motor current; poor wiring or overheating connections; loose mounting bolts or guards.

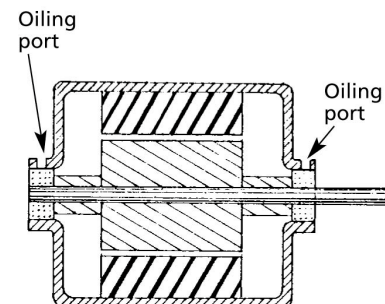


Figure 2 - Location of Bearings

Centrifugal Laundry Tray Pump

The motor used with this pump uses sleeve bearings which require periodic reoiling. Each motor has two bearings, which should be lubricated once a year. The bearings are located around the motor shaft (See Figure 2), at each end of the motor. The oil reservoirs have plastic plugs covering them. Pull out the plugs and put oil in. Replace plugs after oiling.

Follow re-oiling instructions on the motor (see nameplate or terminal box cover). If instructions are not included, re-oil once a year with 30-35 drops of SAE No. 20 non-detergent or electric motor oil. Do not over-lubricate.

PUMP

There is no normal pump maintenance. Some work might be required on the pump when output has been reduced or when seal leaks. This can be caused by lint build-up around the impeller. Disassemble pump (See Mechanical Seal Replacement), remove impeller (Ref. No. 5) and clean out, then re assemble.

MECHANICAL SEAL REPLACEMENT

After pump has been in service for a long period of time, or if pump has been in severe service, it may be necessary to replace shaft seal assembly (Ref. No. 3 & 4). Leakage can be detected by a dripping or flow of liquid from area around motor shaft (Ref. No. 1).

⚠ CAUTION

The precision lapped faces on shaft seal assembly are easily damaged. Handle your replacement seal carefully and read these instructions before attempting to replace seal.

Refer to Figure 5 for Parts Illustration.

1. Disassemble casing (Ref. No. 8) and casing seal (Ref. No. 7) from adapter (Ref. No. 2) by removing fasteners (Ref. No. 9).
2. Notice the location of impeller (Ref. No. 5) on shaft. It should be compressing seal cartridge (Ref. No. 3). Loosen fastener (Ref. No. 6) and impeller will slide off shaft.
3. Pry seal seat (Ref. No. 4) from impeller recess with a small screwdriver (see Figure 3).

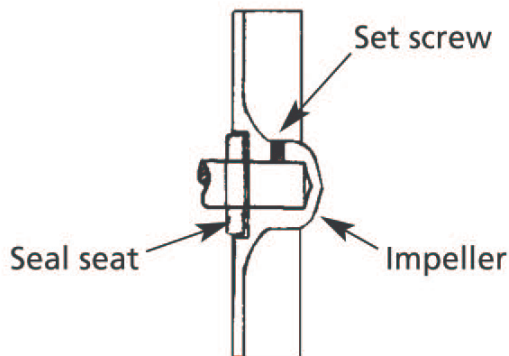


Figure 3 - Mechanical Seal

4. Press old seal cartridge out of adapter by pushing from motor side.

NOTE: Use a 1 1/4" pipe or a socket from a tool set.

5. Clean adapter seal cavity before inserting new seal cartridge.
6. Carefully wipe polished surface of new seal seat with a clean cloth.
7. Wet the rubber portion of seal seat with a light coating of soapy water.
8. Press seal seat squarely into cavity in impeller as illustrated. If seal seat does not press squarely into cavity, it can be adjusted in place by pushing on it with a piece of pipe. Always use a piece of cardboard between pipe and seal seat to avoid scratching seal seat. This is a lapped surface and must be handled very carefully.
9. After seal seat is in place, check that it is clean and has not been scratched or cracked.
10. Replace seal cartridge. A sealing compound (such as silicon or Permatex) may be used to insure a water tight fit on outside of cartridge.
11. Mount adapter on motor mounting face.
12. Replace impeller, tightening it securely with fastener in approximately same position it had been before disassembly. (See Step 2).
13. Make sure casing seal is in place on adapter.
14. Replace casing, tightening securely with fasteners.

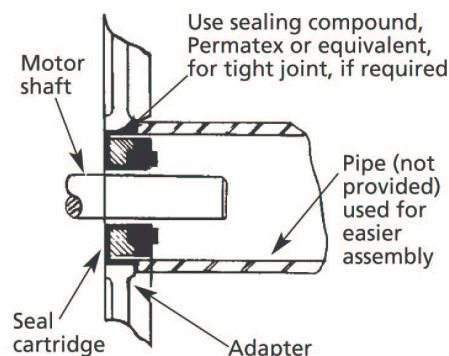


Figure 4 - Mechanical Seal

ROUTINE

Pump should be checked daily, weekly, monthly, etc. for proper operation. If anything has changed since unit was new, unit should be removed and repaired or replaced. Only qualified electricians or service personnel should attempt to repair this unit. Improper repair and/or assembly can cause an electrical shock hazard.

Centrifugal Laundry Tray Pump

For Repair Parts contact dealer where pump was purchased.

Please provide following information:

-Model Number

-Serial Number (if any)

Part description and number as shown in parts list

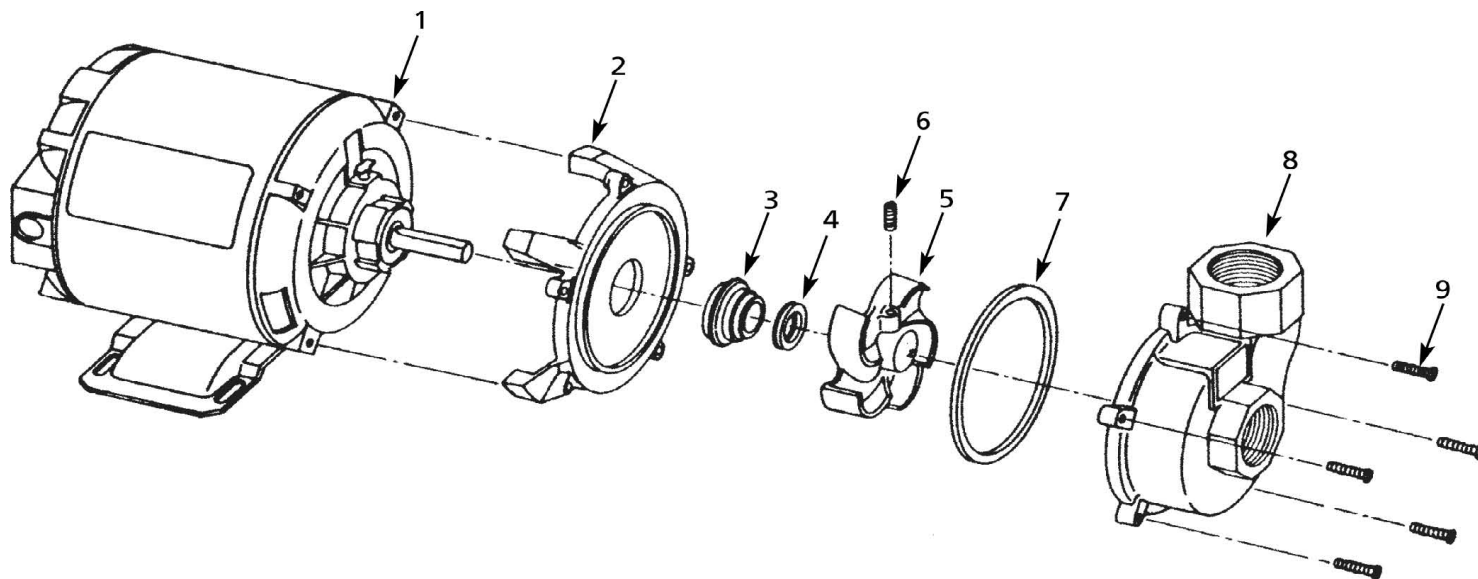


Figure 5 - Repair Parts Illustrations

Repair Parts List

Ref No.	Description	Part Number for 3201-96	Qty
1	Motor	1626-048-00	1
2	Adapter	3200-030-96	1
3 & 4	Shaft Seal Assembly - Buna N	1640-161-93	1
5	Impeller Kit (includes Ref. Nos. 5 and 6)	3200-010-96	1
6	Fastener	Incl. w/Ref 5	1
7	O-Ring Kit - Buna N	3200-300-90	1
8	Casing Kit (includes Ref. Nos. 8 and 9)	3200-001-96	1
9	Fastener	Incl. w/Ref 8	5