

**SPECIFICATIONS:****MODEL NUMBER:** 8000-643-938**PUMP DESIGN:** Positive Displacement 3 Chamber Diaphragm Pump**CAM:** 3.0 Degree**MOTOR:** Permanent Magnet, P/N 11-111-00**VOLTAGE:** 12VDC Nominal**PRESSURE SWITCH:** Adjustable Shut-Off (Range 80-100 PSI)

Factory Set @100 PSI, Turn On 85 PSI + 5 PSI

**LIQUID TEMPERATURE:** 180 Degrees Fahrenheit (82 Degrees Centigrade) Max.**PRIME:** Self-Priming Up To 12.0 Ft. Vertical,

Max. Inlet Pressure 30 PSI (2.1 Bar)

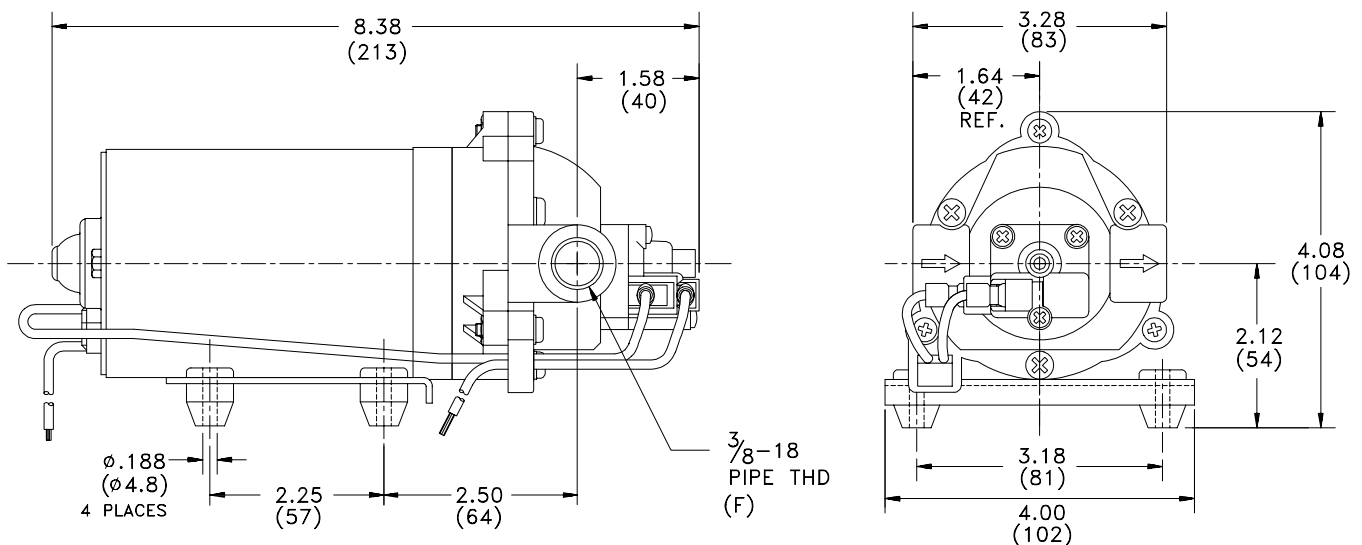
**PORTS:** 3/8"-18 NPT, Female**MATERIAL OF CONSTRUCTION:**

PLASTICS- Nylon

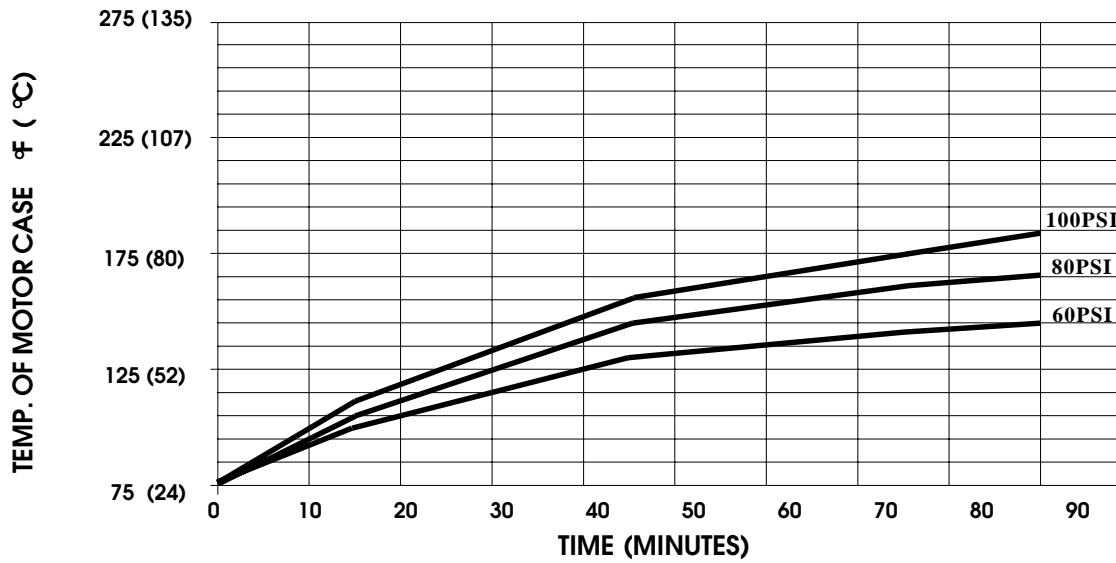
VALVES- Buna-n

DIAPHRAGM- Geolast

FASTENERS- Zinc Plated Steel

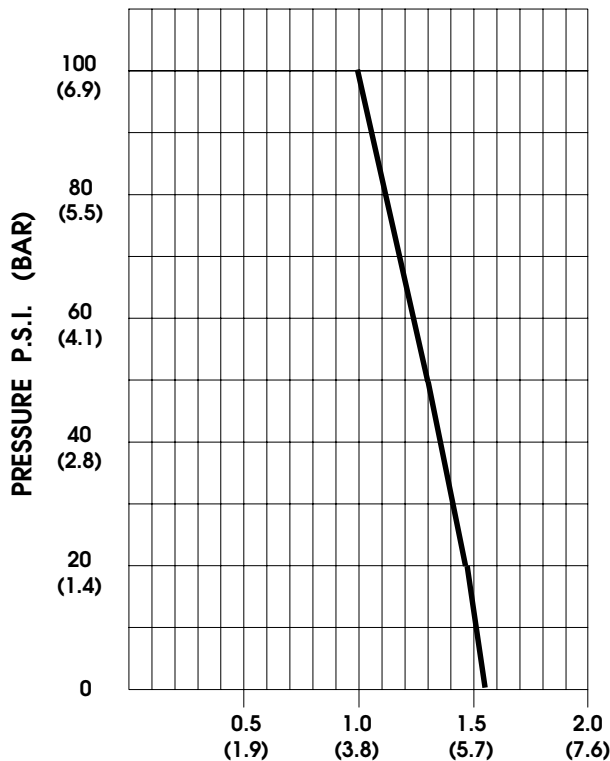
**NET WEIGHT:** 4.6 Lbs (2.1 Kg)**DUTY CYCLE:** Intermittent (See Temperature Rise Chart)**TYPICAL APPLICATIONS:** Soil Extraction**DIMENSIONS:**

TEMPERATURE RISE



THIS GRAPH IS FOR USE AS A DESIGN GUIDE. IT IS BASED ON RUNNING CONTINUOUSLY WITH AN AMBIENT TEMPERATURE OF 75 ° F IN STILL AIR.

TYPICAL PERFORMANCE



PRESSURE (PSI)	FLOW (GPM/LIT)	RPM MIN/MAX	CURRENT (AMPS)	VOLTAGE (VOLTS)
OPEN	1.55/5.9	2237/2276	3.2	24 VDC
10	1.53/5.8	2208/2245	3.6	"
20	1.48/5.6	2175/2210	4.2	"
30	1.41/5.3	2125/2180	4.9	"
40	1.36/5.1	2090/2130	5.5	"
50	1.30/4.9	2050/2080	6.0	"
60	1.24/4.7	2005/2045	6.7	"
70	1.19/4.5	1965/1990	7.3	"
80	1.14/4.3	1915/1955	7.9	"
90	1.09/4.1	1875/1910	8.5	"
100	1.00/3.8	1845/1860	9.0	"

FLOW - GALLONS PER MINUTE (LITERS PER MINUTE)

For technical advice or service please take your pump into your local pump service center.

To order pump or parts or for pricing please go to the following links :

[Shurflo Pumps Home >>](#)

[Shurflo Pumps stock list >>](#)