

**Blaster™****MARINE** PRODUCT DATA SHEET

OEM: 3901-3204  
 AFTERMARKET: 3901-3214

Perfect for tough washdown applications, such as fish box, scaling, and anchor chain cleaning, these rugged self-priming pump deliver high lift, can run dry without damage, and won't overheat with extended use. Pump is ignition protected and switch is sealed against water damage.

**TYPICAL APPLICATIONS**

Marine fresh or salt water wash down installations. Other uses may include 24 VDC pressurized water systems. This pump may be used for general water transfer. For other applications, contact SHURflo.

**PUMP**

Type: 3 Chamber Diaphragm  
 Ports: 1/2"-14 NPSM-Male.  
 Liquid: 130 °F [54 °C] Max  
 Prime: 6 feet [1.82 M]  
 Inlet PSI: 30 PSI [2.1 Bar] Max  
 Run Dry: Yes

**ELECTRICAL**

Motor: 24VDC Permanent Magnet, Intermittent Duty  
 Protection: Thermal Overload, Automatic Restart  
 Leads: 16 AWG, 16" [40 cm] Red +, 13" [33 cm] Black -  
 Fuse: 5 Amp Recommended  
 Control: Adjustable Switch. Shut-Off 45 PSI [3.1 Bar] ± 5 PSI [0.4 Bar]  
 Restart 25 PSI [1.7 Bar] ± 5 PSI [0.4 Bar]

**MATERIALS**

Housing: Polypro  
 Valves: EPDM  
 Diaphragm: Santoprene  
 Hardware: Stainless Steel

**APPROVALS**

Ignition Protected, CE, ISO 8846

**WARRANTY**

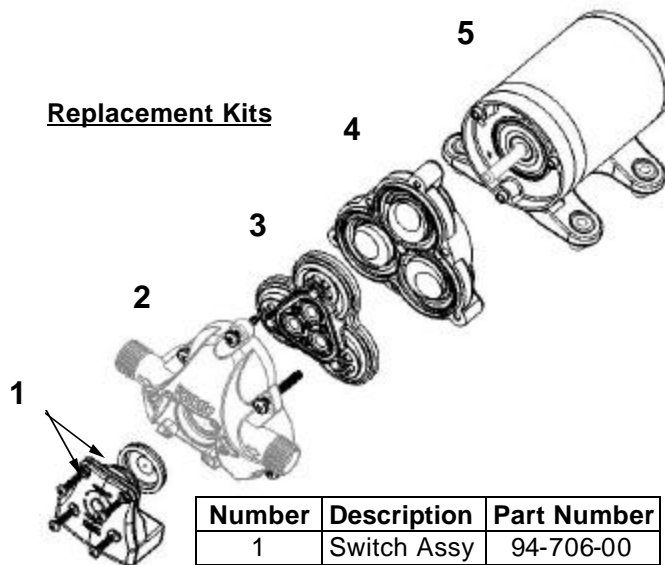
3 Year Limited Warranty  
 See SB-1041 & SB-1050 For Full Warranty Details

**SHIPPING**

Net Weight (Boxed): 4.8 Lb [2.2 Kg] each  
 Carton Weight: 58 Lb [26.3 Kg]  
 Carton Size: 24"L x 18"W x 11"H  
 [60.9cm x 45.7cm x 27.9cm]

**RELATED DOCUMENTS**

Catalog: MS-030-140  
 Installation Manual: 911-732  
 Maintenance: 911-732  
 Applications Spec Guide: MS-020-005  
 Warranty: SB-1050

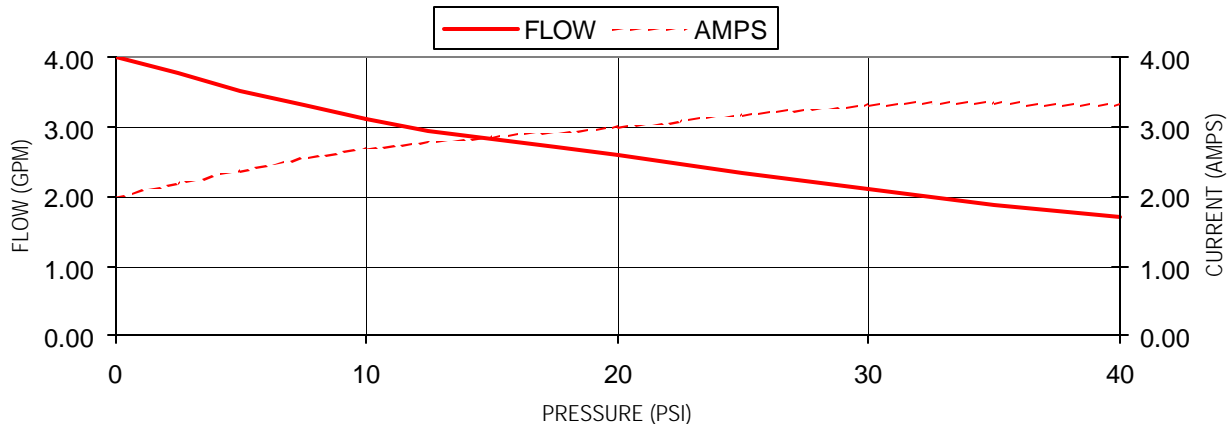
**Replacement Kits**

Number	Description	Part Number
1	Switch Assy	94-706-00
2	Upper Hsg	94-706-01
3	Valve Assy	94-706-02
4	Drive Assy	94-706-06
5	Motor	11-187-12

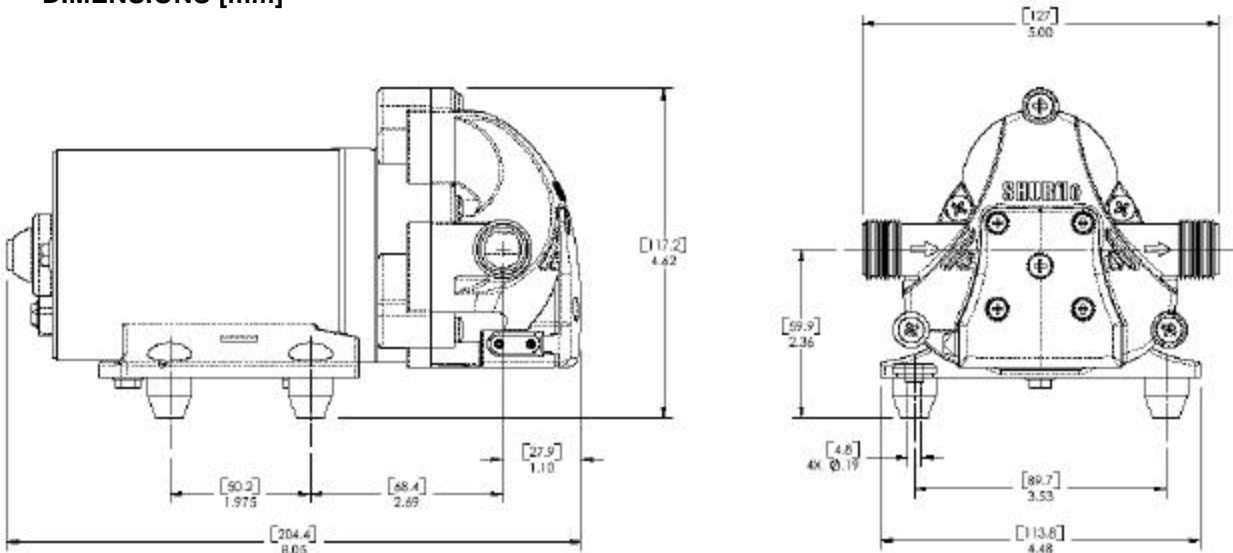


### PERFORMANCE @ 24V DC

PRESSURE		FLOW		CURRENT
BAR	PSI	GPM	LPM	AMPS
0.0	0	4.0	15.1	2.0
0.7	10	3.1	11.7	2.7
1.4	20	2.6	9.8	3.0
2.1	30	2.1	7.9	3.3
2.8	40	1.7	6.4	3.3



### DIMENSIONS [mm]



---

For technical advice or service please take your pump into your local pump service center.

To order pump or parts or for pricing please go to the following links :

[Shurflo Pumps Home >>](#)

[Shurflo Pumps stock list >>](#)