

PRODUCT DATA SHEET

MODEL: 3000-050

SPECIFICATIONS:

MODEL NUMBER: 3000-050

PUMP DESIGN: Flexible Impeller Pump

VOLTAGE: 12 VDC Nominal

MOTOR: Permanent Magnet, Thermally Protected

FUSE: Supply Pump With 15 Amps Time Delay Fuse

OPERATING PRESSURE: 15 PSI (1.0 Bars) Max.

LIQUID TEMPERATURE: 40 ° F to 185 °F Max. [4 °C to 85 °C]

PRIMING: Self-Priming Up to 7.5 FT [2.3 M] Vertical Prime,
25 FT [7.6 M] Horizontal Prime (With Water)

PORTS: 3/4" Garden Hose Thread (O.D.), 3/8" NPT (I.D.)

MATERIAL OF CONSTRUCTION:

PLASTICS- Glass Filled Polyester

IMPELLER- Buna-n

LIP SEAL- Buna-n

FASTENERS- Stainless Steel

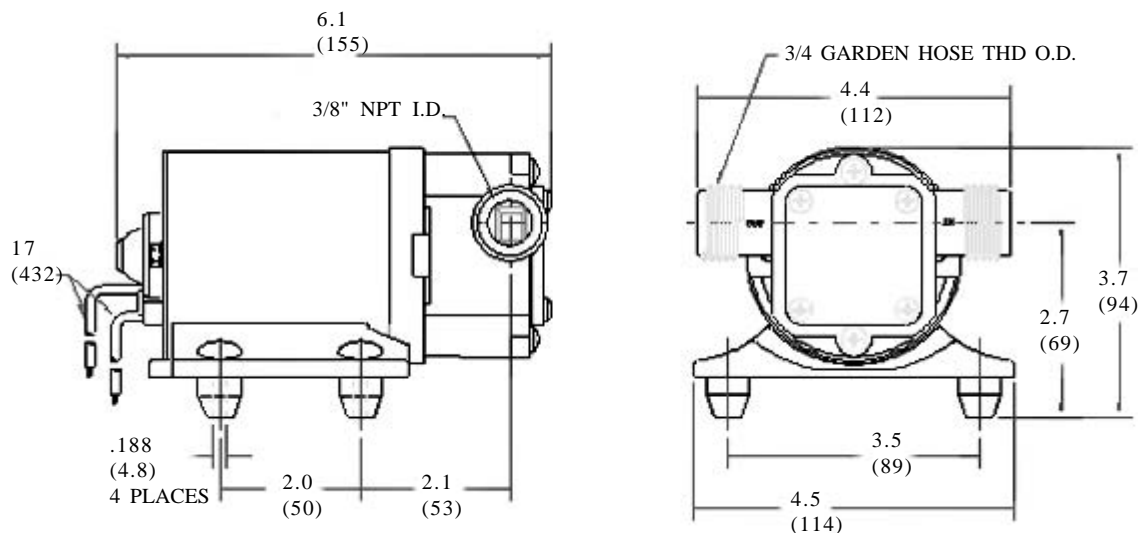
NET WEIGHT: 3.3 Lbs (1.5 Kg)

DUTY CYCLE: Intermittent (See Temperature Rise Chart)

AGENCY CERTIFICATION: UL, C-UL Marine Listing

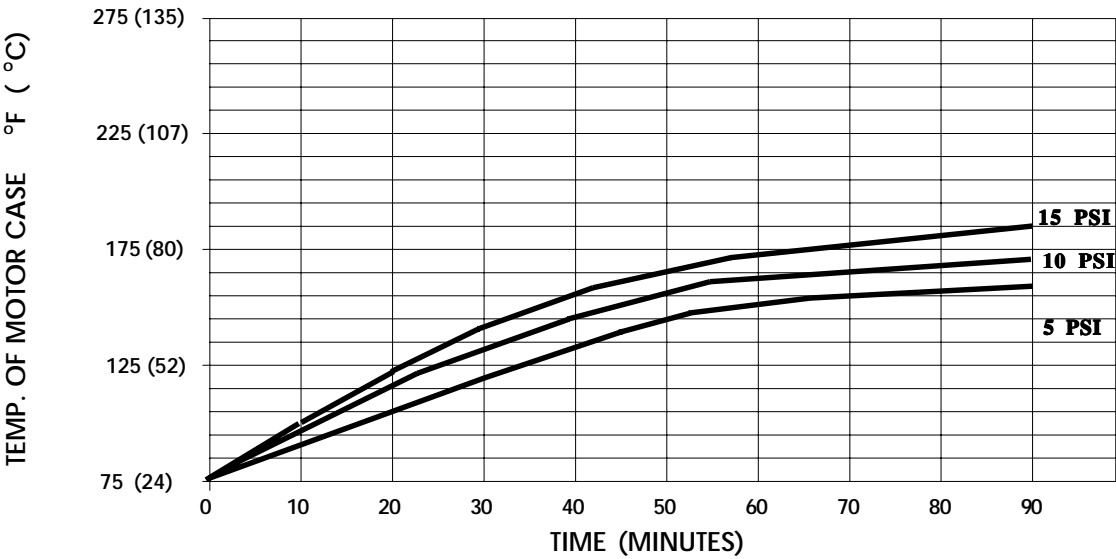
TYPICAL APPLICATIONS: General Purpose Transfer Pump

DIMENSIONS: inches (millimeters)



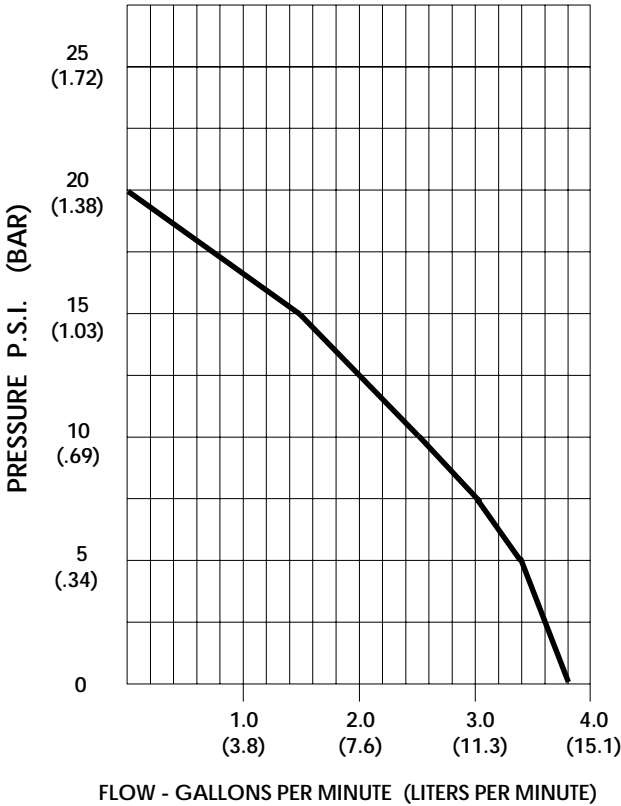
MODEL: 3000-050

TEMPERATURE RISE



THIS GRAPH IS FOR USE AS A DESIGN GUIDE. IT IS BASED ON RUNNING CONTINUOUSLY WITH AN AMBIENT TEMPERATURE OF 70 ° F IN STILL AIR.

TYPICAL PERFORMANCE



PRESSURE (PSI/BAR)	FLOW (GPM/LIT)	CURRENT (AMPS)	VOLTAGE (VOLTS)
OPEN	3.8/14.2	6.5	12 VDC
5/34	3.4/12.9	7.1	"
10/69	2.5/9.5	7.4	"
15/1.03	1.5/5.7	8.0	"
20/1.38	0	9.1	"

For technical advice or service please take your pump into your local pump service center.

To order pump or parts or for pricing please go to the following links :

[Shurflo Pumps Home >>](#)

[Shurflo Pumps stock list >>](#)