

Little **GIANT**[®] Pump Company

TE-5-MD-HC



Features

- Thermally Protected, Totally Enclosed, Fan Cooled, Permanent Split Capacitor Motor
- Ball Bearings
- 6' Power Cord with 3-Prong Plug (Not installed)
- Specific Gravity to 1.1
- Fluid Temperature to 200 Degrees F.
- Ambient Air Temperature to 77 Degrees F.
- NOTE: Consult your local distributor or the factory for applications with higher ambient temperatures, specific gravities and viscosities.

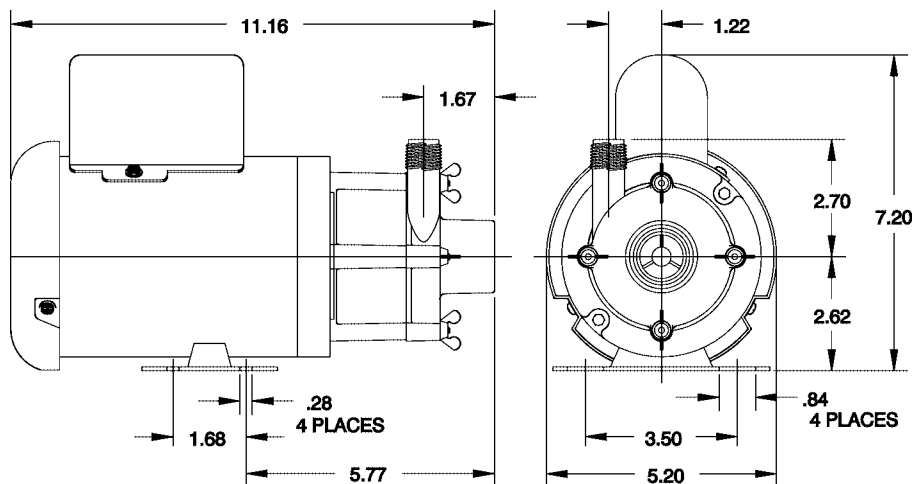
Construction

- Volute — Glass-filled Ryton[®]
- Backplate — Glass-filled Ryton[®]
- Impeller — Glass-filled Ryton[®] w/ Carbon Bushing
- Shaft — Ceramic
- Thrust Washers — Ceramic
- O-Ring — Viton[®]

The Little Giant MD-HC series features leakproof, seal-less magnetic drives and are designed for in-line, non submersible use. Volute, magnet housing and impeller are glass-filled Ryton[®] for excellent chemical resistance. Ceramic shaft and thrust washers are 99.5% pure alumina for excellent wear and trouble-free service. Pumping

Little Giant Pump Co.

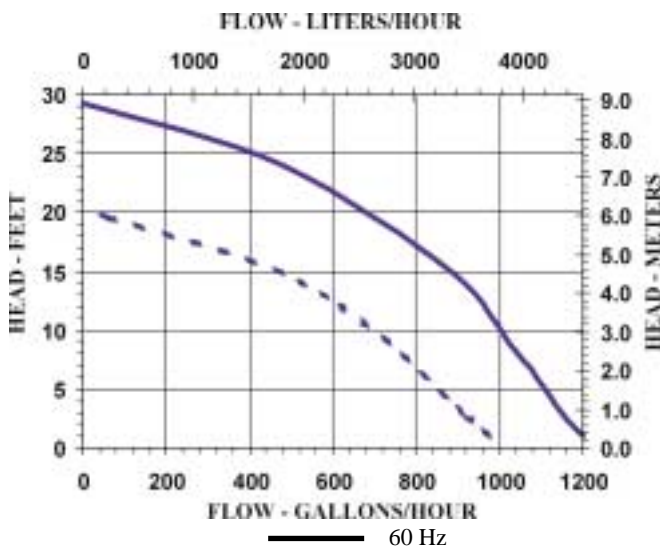
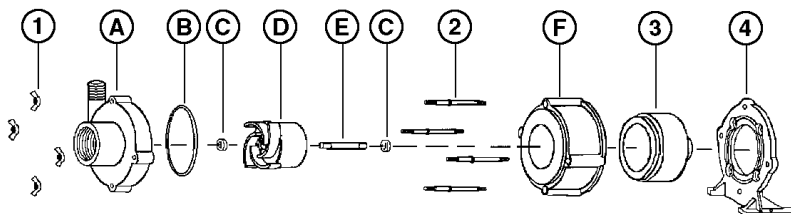
TE-5-MD-HC



NOTE: Designs and dimensions may vary for various reasons (i.e. type of motor). This information should be used as general guide rather than an unqualified guarantee. Specifications are subject to change without prior notice.

Specifications

| Model No. | Item No. | Intake | Discharge | Listing(s) | HP | Volts | Hertz | Amps | Watts | Performance (GPH @ Head) | | | | | Shut Off | | Pwr. Cord (ft) | Weight (Lbs.) |
|------------|----------|---------|-----------|------------|-----|-------|-------|---------|---------|--------------------------|---------|------|------|------|----------|------|----------------|---------------|
| | | | | | | | | | | 1' | 3' | 6' | 9' | 15' | Feet | PSI | | |
| TE-5-MD-HC | 584604 | 1" FNPT | 1/2" MNPT | UR/C-CSA | 1/8 | 115 | 50/60 | 2.3/3.0 | 220/325 | 1200 | 1150 | 1090 | 1020 | 885 | 29.3 | 12.7 | 6 | 28.00 |
| | | | | | | | | 230 | 50/60 | 1.3/1.4 | 220/325 | 1200 | 1150 | 1090 | 1020 | 885 | 29.3 | 12.7 |
| TE-5-MD-HC | 584698 | 1" FNPT | 1/2" MNPT | | | | | | | | | | | | | | | 7.00 |



Replacement Parts

| ITEM | PART NO. | DESCRIPTION |
|------|----------|----------------|
| A | 183066 | Volute |
| B | 924008 | O-Ring |
| C | 921077 | Thrust Washer |
| D | 182141 | Impeller |
| E | 180057 | Shaft |
| F | 182006 | Housing |
| 1 | 920003 | Wing Nut |
| 2 | 911403 | Stud, Collared |
| 3 | 183602 | Drive Magnet |

Note: Parts A-F Contact Fluid.

Little Giant Pump Co.

For technical advice or service please take your pump into your local pump service center.

To order pump or parts or for pricing please go to the following links :

[Little Giant Pumps Home >>](#)

[Little Giant Pumps stock list >>](#)