

Little **GIANT**[®] Pump Company

5-MD-SC



Features

- Thermally Protected, Open, Fan Cooled, Permanent Split Capacitor Motor
- Sleeve Bearings
- 6' Power Cord with 3-Prong Plug (No plug on 230V)
- Specific Gravity to 1.1
- Fluid Temperature to 150 Degrees F.
- Ambient Air Temperature to 77 Degrees F.
- NOTE: Consult your local distributor or the factory for applications with higher ambient temperatures, specific gravities and viscosities.

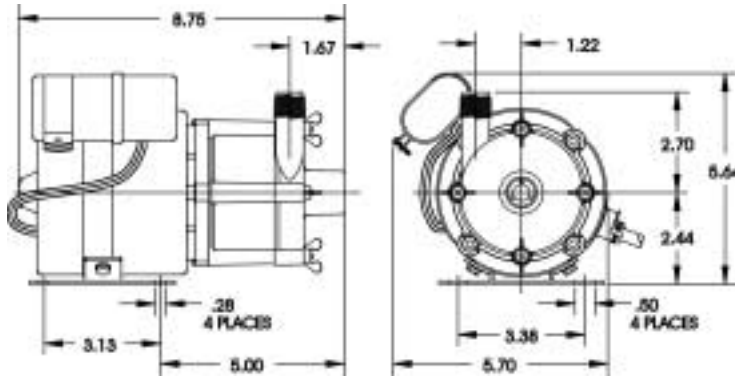
Construction

- Volute — Glass-lined Polypropylene
- Housing — Glass-filled Polypropylene
- Impeller — Glass-filled Polypropylene
- Shaft — Ceramic
- Thrust Washers — Ceramic
- O-Ring — Nitrile

The Little Giant MD-SC series features leakproof, seal-less magnetic drives and are designed for in-line, non submersible use. Volute, magnet housing and impeller are glass-filled polypropylene for excellent chemical resistance. Ceramic shaft and thrust washers are 99.5% pure alumina for excellent wear and trouble-free service.

Little Giant Pump Co.

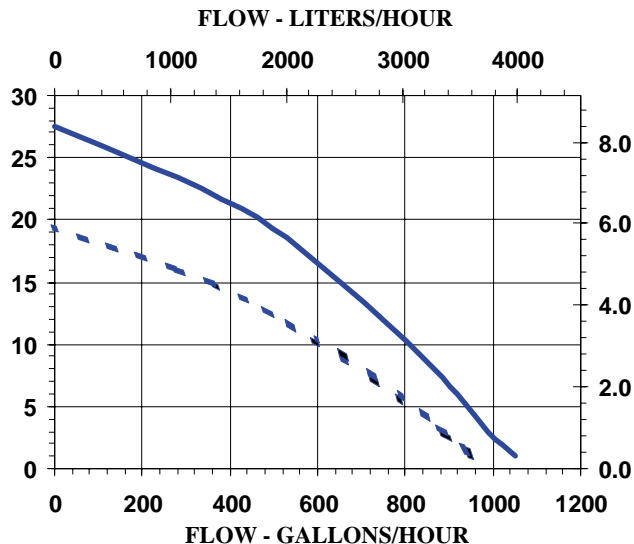
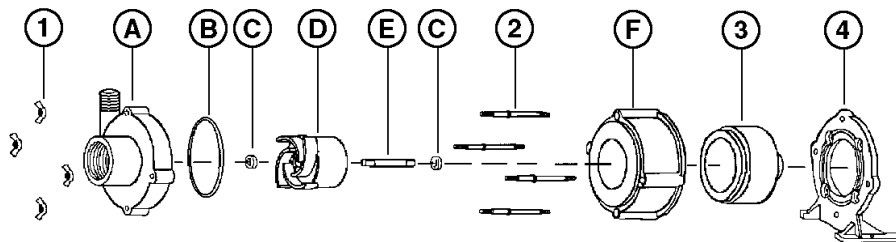
5-MD-SC



NOTE: Designs and dimensions may vary for various reasons (i.e. type of motor). This information should be used as general guide rather than an unqualified guarantee. Specifications are subject to change without prior notice.

Specifications

| Model No. | Item No. | Intake | Discharge | Listing(s) | HP | Volts | Hertz | Amps | Watts | Performance (GPH @ Head) | | | | | Shut Off Feet | PSI | Pwr. Cord (ft) | Weight (Lbs.) |
|-----------|----------|---------|-----------|----------------------|-----|-------|-------|---------|---------|--------------------------|-----|-----|-----|-----|---------------|------|----------------|---------------|
| | | | | | | | | | | 1' | 3' | 6' | 9' | 15' | | | | |
| 5-MD-SC | 583503 | 1" FNPT | 1/2" MNPT | UR/C-CSA | 1/8 | 115 | 50/60 | 2.0 | 208 | 1050 | 990 | 920 | 840 | 655 | 27.5 | 11.9 | 6 | 9.25 |
| 5-MD-SC | 583513 | 1" FNPT | 1/2" MNPT | UR/C-CSA | 1/8 | 230 | 50/60 | 1.0/1.1 | 200/240 | 1050 | 990 | 920 | 840 | 655 | 27.5 | 11.9 | 6 | 9.25 |
| 5-MD-SC | 583598 | 1" FNPT | 1/2" MNPT | Pump Head Less Motor | | | | | | | | | | | | | | 2.00 |



Replacement Parts

| ITEM | PART NO. | DESCRIPTION |
|------|----------|----------------|
| A | 183065 | Volute |
| B | 924007 | O-Ring |
| C | 921077 | Thrust Washer |
| D | 183139 | Impeller |
| E | 180057 | Shaft |
| F | 182005 | Housing |
| 1 | 920003 | Wing Nut |
| 2 | 911403 | Stud, Collared |
| 3 | 183602 | Drive Magnet |
| 4 | 183031 | Mtg. Bracket |

Note: Parts A-F Contact Fluid.

Little Giant Pump Co.

For technical advice or service please take your pump into your local pump service center.

To order pump or parts or for pricing please go to the following links :

[Little Giant Pumps Home >>](#)

[Little Giant Pumps stock list >>](#)