

Little GIANT[®] Pump Company

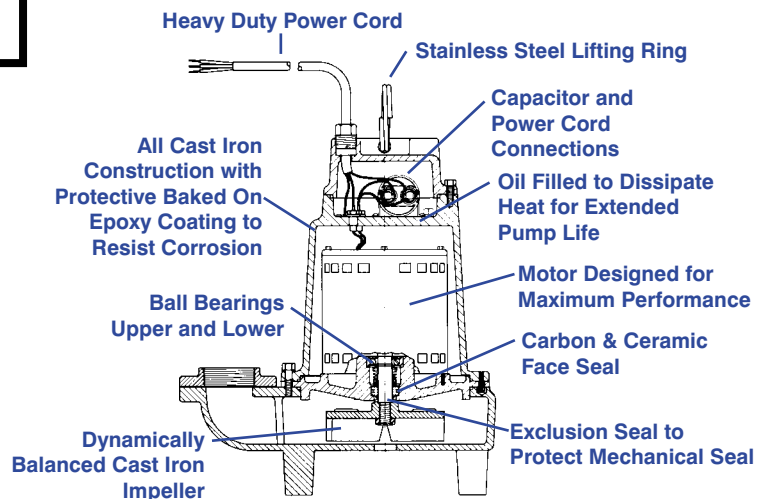
Eliminator Series Sump/Effluent Pump

14EH SERIES



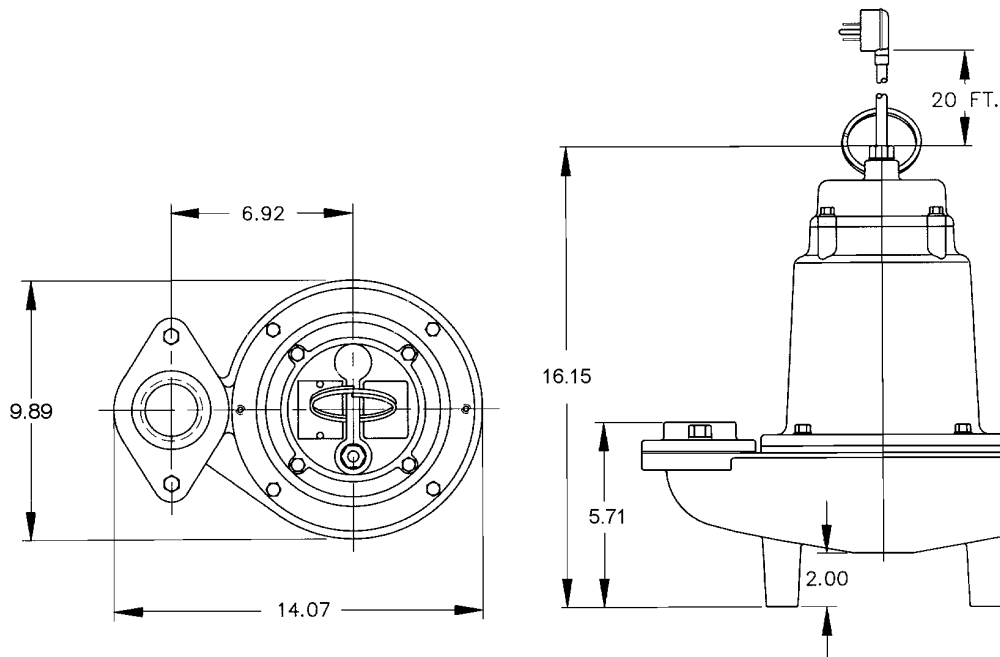
Features

- Handles liquids and solid waste materials up to 3/4" diameter.
- Cast iron pump housings with protective epoxy coating for corrosion and rust resistance
- Oil-filled motor housings for lifetime lubrication and rapid heat dissipation
- Stainless steel screws, bolts and lifting ring
- Mechanical seal (stainless steel spring, nitrite parts, carbon and ceramic faces) for long life and reliability.
- Secondary Exclusion Seal to help protect mechanical seal
- High Speed (3450 RPM) 1/2 HP, ball bearing motor and thermal overload protection for high head operation.
- Permanent split capacitor design.
- Capacitor and power cord connections isolated from oil filled motor housing for ease of field maintenance.
- Dynamically balanced two-vane non-clogging impeller with pump-out vanes to enhance pumping performance and efficiency.



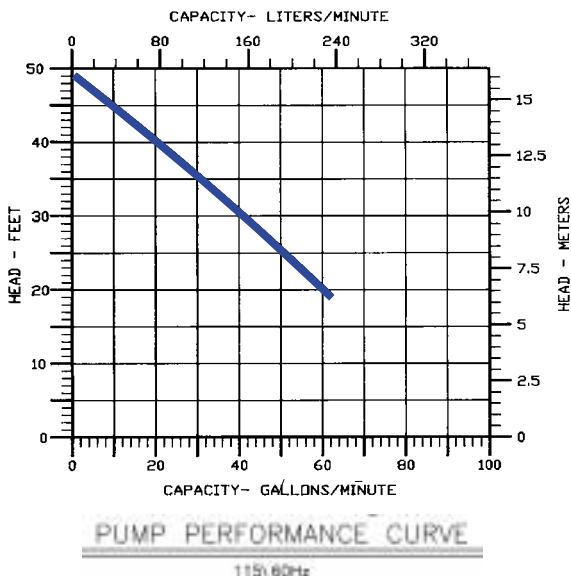
Little Giant Pump Co.

14EH SERIES SUMP PUMP



Specifications

MODEL NO.	ITEM NO.	DISCHARGE	SOLIDS Diameter	LISTING	HP	VOLTS	PHASE	Hz.	RPM	RUNNING AMPS/WATTS	SHUT OFF	P.S.I.	PWR CRD	WEIGHT (lbs.)
14EH-CIM	514220	2" FNPT	3/4"	UL/CSA	1/2	115	1	60	3450	12.5/1450	50'	21.6	20'	74
14EH-CIM	514221	2" FNPT	3/4"	UL	1/2	208/240	1	60	3450	5.7/1275	50'	21.6	20'	74



Construction

Motor Housing	Epoxy Coated Cast Iron
Impeller Material	Epoxy Coated Cast Iron
Impeller Type	Non-Clog
Volute	Epoxy Coated Cast Iron
Power Cord	SJTW-A
Mechanical Shaft Seal	Nitrile with carbon and ceramic faces
Fasteners	Stainless Steel
Shaft	Stainless Steel
Bearings	Upper and lower ball bearings

For technical advice or service please take your pump into your local pump service center.

To order pump or parts or for pricing please go to the following links :

[Little Giant Pumps Home >>](#)

[Little Giant Pumps stock list >>](#)