

Little GIANT[®] Pump Company

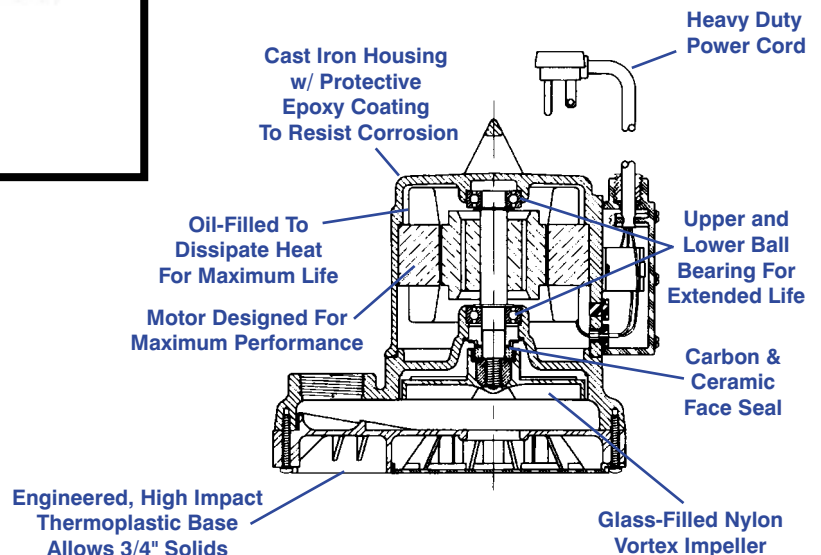
Eliminator Series Sump/Effluent Pumps

10E SERIES



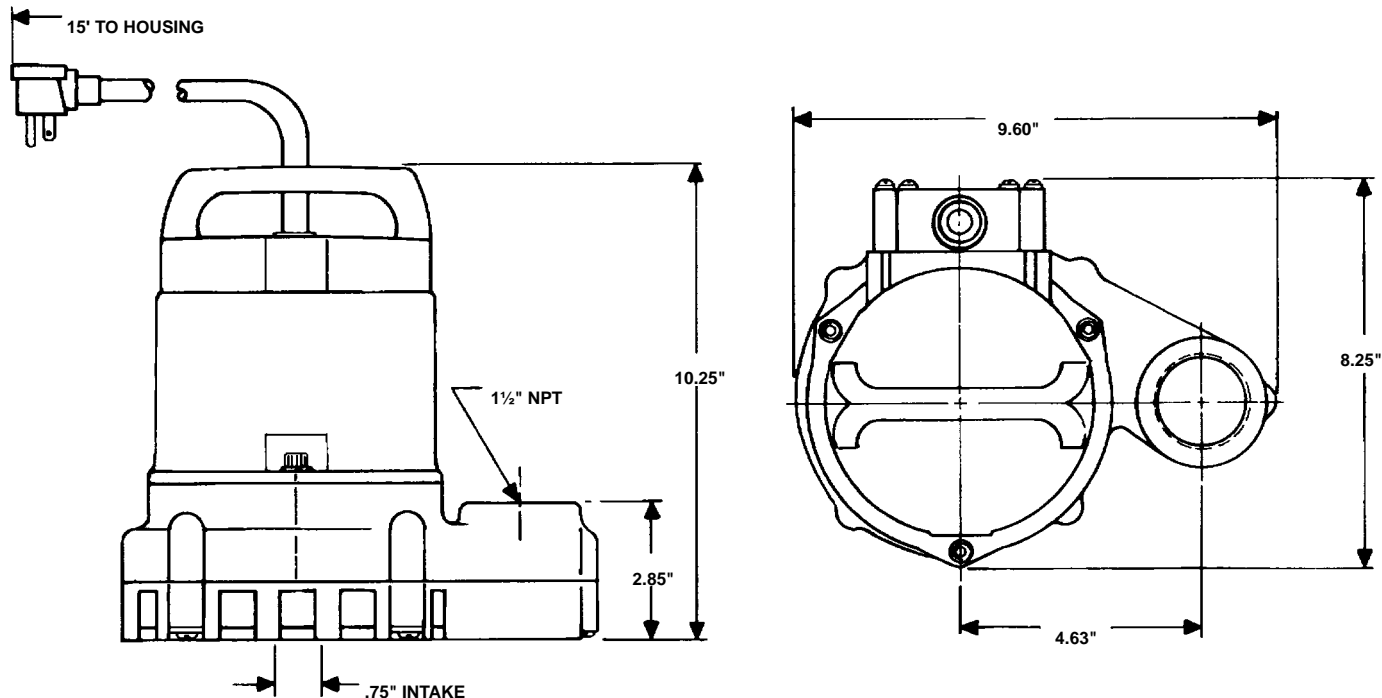
Features

- Handles liquids and solid waste materials up to 3/4" diameter
- Cast iron pump housing with protective epoxy coating for corrosion resistance
- Oil-filled motor housing for lifetime lubrication and rapid heat dissipation
- Stainless steel fasteners
- Mechanical seals (stainless steel spring, nitrile parts, Carbon and ceramic faces)
- Bearings: Upper and lower ball bearings
- Thermal overload protection
- Manual and Automatic models
- Automatic operation has 9 to 14 "On" level and 2 to 6 "Off" level range with piggyback remote float switch
- All 115 volt models are UL/CSA listed



Little Giant Pump Co.

10E SERIES SUMP/EFFLUENT PUMPS



Specifications

MODEL NO.	ITEM. NO.	LISTING	HP	VOLTS	SOLIDS SIZE (Dia. In.)	RUNNING AMPS/WATTS	PERFORMANCE (GPM @ HEAD)				SHUTOFF (Ft.)	P.S.I.	PWR. CRD. (Ft.)	WEIGHT (Lbs.)	DIMENSIONS (H x L x W in.)
							5	10	15	20					
10E-CIM	511200	UL/CSA	1/2	115	3/4"	10.5/900	80	67	52	33	26	11.2	15	35	10.25 x 9.6 x 8.25
10E-CIA-RFS	511300	UL/CSA	1/2	115	3/4"	10.5/900	80	67	52	33	26	11.2	15	37	10.25 x 9.6 x 8.25
10E-CIM	511275	UL/CSA	1/2	208-230	3/4"	6.6A/900	80	67	52	33	26	11.2	15	36	10.25 x 9.6 x 8.25
10E-CIM	511225	UL/CSA	1/2	115	3/4"	10.5/900	80	67	52	33	26	11.2	25	36	10.25 x 9.6 x 8.25

All Models are 60 Hz

(NOTE: Use 6.5 amps for 511275 for 50 Hz rating)

RFS= Mechanical Float Switch



Construction

Motor Housing	Epoxy Coated Cast Iron
Impeller Material	Nylon
Impeller Type	Vortex
Volute	Epoxy Coated Cast Iron
Power Cord	SJTW-A
Mechanical Shaft Seal	Nitrile with carbon and ceramic faces
Fasteners	Stainless Steel
Shaft	Steel
Bearings	Upper and lower Ball Bearings

For technical advice or service please take your pump into your local pump service center.

To order pump or parts or for pricing please go to the following links :

[Little Giant Pumps Home >>](#)

[Little Giant Pumps stock list >>](#)