

PARTM

ELECTRIC BILGE PUMPS

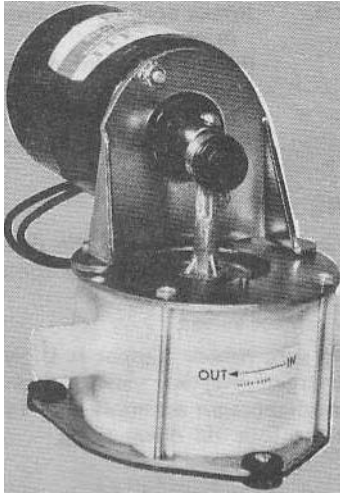
MODEL 37201 - 0000

INTERMITTENT DUTY

37202 - Series

CONTINUOUS DUTY

PRODUCT DATA



FEATURES

- Self-Priming
- Diaphragm Design Allows Dry Running
- Built-in Hydraulic Pulsation Dampener
- Corrosion Resistant Materials Throughout for Sea Water Service

SPECIFICATIONS

| | |
|-------------------------|---|
| Open Flow: | 3.5 GPM For 37201-0000 |
| | 4.5 GPM For 37202-Series |
| Vert. Dry Suction Lift: | 7 feet |
| Ports: | 3/4" Slip-on Hose |
| Weight: | Model 37201-0000 - 5.0 Lbs. (2.3 kgs) |
| | Model 37202-Series - 5.5 Lbs. 12.5 kgs) |

STANDARD MODELS

| Model | Voltage | Nominal Current | Fuse Size | |
|------------|---------|-----------------|-----------|--------|
| | | | 510-810 | Normal |
| 37201-0000 | 12 VDC | 5.5 AMP | 6 1/4 AMP | 8 AMP |
| 37202-0000 | 12 VDC | 7.5 AMP | 8 AMP | 10AMP? |
| 37202-0010 | 24 VDC | 6.5 AMP | 7 AMP | 10AMP |

INSTALLATION

MOUNTING

Mount upright in a dry location (above highest bilge water level) on a solid surface. Mounting screws should be tightened only enough to slightly compress grommets.

PLUMBING

For intake and discharge use 3/4" I.D. non-collapsible hose. Keep intake and discharge lines free of kinks and restrictions. To protect pump from debris, use a 3/4" in-line strainer (PAR Model 36200.0000) in the intake line from the bilge. Use a 3/4" thru-hull fitting (PAR Model 59431-0000) for discharge.

WIRING

Wire pump in a circuit independent of all other electrical fixtures. Use stranded copper wire. Install fuse in positive circuit. See table for recommended wire and fuse size. See diagram for wiring connections. Use a 10 amp-rated switch (JABSCO 3-way switch Model 9607Q-0110). After installation, it is recommended that voltage be checked at the motor terminals with motor operating under full load and all other appliances in the circuit operating. Be sure measured voltage is not less than 11 volts on a 12 volt system with a fully charged battery.

MAINTENANCE

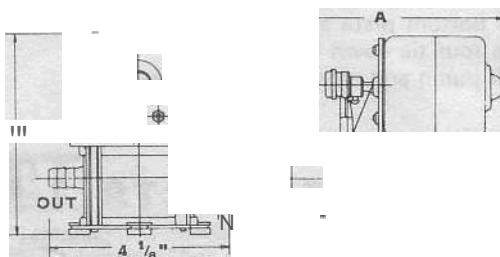
LUBRICATION: Check connecting rod bearing annually and add chassis lube as needed. No other lubrication of the pump is required.

WINTER STORAGE: When possible it is preferred that the complete pump be removed and stored in a warm dry place. If this is not possible the pump must be completely drained, hoses removed and pump run until all water is expelled.

WIRING

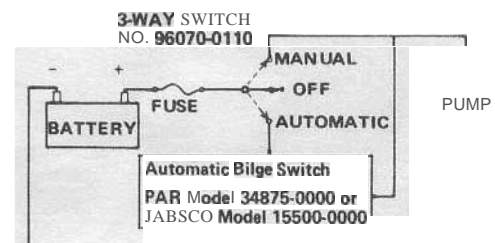
| Wire Length Between Battery and Motor | Model 37201-0000 | Model 37202-Series |
|---------------------------------------|------------------|--------------------|
| 1-25 feet | 12 AWG | 12 AWG |
| 25 - 50 feet | 10 AWG | 10 AWG |

DIMENSIONAL DRAWING



A MODEL 37201-0000 - 7"
A MODEL 37202 SERIES - 7 5/8"

WIRING DIAGRAM FOR AUTOMATIC OPERATION

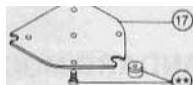
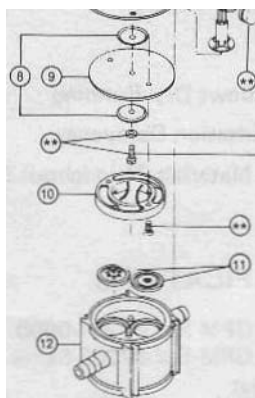


JABSCO PRODUCTS



Form 43000-0110 Rev. 10 77

EXPLODED VIEW



• "Indicates items included in Hardware Kit (Key 21).

PARTS LIST

37201/37202 Series

| Part | Description | Part Number | Qty |
|------|----------------------------|--------------------------|-------|
| 1 | Motor Kit 12 Volt D.C | 30201-0000 (| |
| 1 | Motor Kit 24 Volt D.C | 30200-0040 \ See Note 1. | 1 |
| 2 | Motor Mount | 35797-0000 | 1 |
| 7 | Connecting Rod Kit. | 30040-0000* | 1 |
| 8 | Diaphragm Plate | 35688-0000- See Note 2 | 2 |
| 9 | Diaphragm | 37174-0000* | 1 |
| 10 | Retainer | 35788-0000 | 1 |
| 11 | Valve Set (Inlet & Outlet) | 30005-0000* | 1 Set |
| 12 | Base | 35795-0000 ** | 1 |
| 15 | Pulsation Dampener | 37179-0000" | 1 |
| 17 | Bottom Plate | 35798-0000 | 1 |
| 21 | Hardware Kit | 37168"()000 | 1 Set |
| | Service Kit" | 37182-D000 | |

*Indicates Parts Contained in Service Kit.

NOTE 1- For Model 37201-0000 Use Replacement Motor Number 30202-0000 (12 Volt Only).

NOTE 2- For Model 37201-0000 Use 2 Each 35983-0000 Diaphragm Plates.

TROUBLE SHOOTING

Problems

Causes

Loss of suction to pump.

- Air leak in suction line.
- Bilge pickup not submerged.
- Intake hose kinked or plugged.
- Fouled intake or discharge valve.
- Ruptured diaphragm.

Rough or noisy operation.

- Intake or discharge hose kinked or plugged.
- Pump not mounted firmly.
- Loosened eccentric set screw or worn connecting rod bearing.
- Ruptured or collapsed pulsation dampener.

VALVE REPLACEMENT

1. Turn off power to pump. Remove four tie down bolts.
2. Expose valves by lifting motor mount and the attached diaphragm assembly from pump base.
3. Remove and clean or replace valves.
4. Install valves, making sure rubber flapper is UP on intake and DOWN on discharge. Replace valve retaining plate.
5. Replace motor-mount-diaphragm assembly and fasten evenly to base with the four tie down bolts.

DIAPHRAGM AND CONNECTING ROD REPLACEMENT

1. Turn off power to pump. Remove four tie down bolts.
2. Lift motor mount and the attached diaphragm assembly from pump base.
3. Remove two diaphragm retainer screws and the diaphragm retainer.
4. Pull connecting rod and diaphragm from eccentric and remove from motor mount, then, unscrew bolt to separate diaphragm and plates.
5. Check diaphragm for cuts and cracks. Check rod assembly bearing and eccentric for breaks, cracks or excessive wear. Replace if badly worn.
6. During reassembly, ensure that eccentric is firmly seated on motor shaft and set screw is tightened firmly against flat side of shaft.
7. Loosely reassemble diaphragm, diaphragm plates, washer and diaphragm bolt onto connecting rod. Slide connecting rod onto eccentric shaft with two thrust washers on shaft. Secure diaphragm to motor mount with the diaphragm retainer and two screw.
8. Tighten connecting rod bolt while maintaining alignment of rod bearing and eccentric. CAUTION: Avoid misalignment or twisting of rod on eccentric shaft or excessive bearing wear will result.

PULSATION DAMPENER REPLACEMENT

1. Disconnect power leads from pump and remove from mount. Remove four tie down bolts.
2. Remove bottom plate screw and the bottom plate. Pull out and replace pulsation dampener; position the 3-ribbed cavity on discharge side.
3. Replace bottom plate and screw. Tighten evenly to base with the four tie down bolts.
4. Reinstall pump and reconnect power leads.

JABSCO PRODUCTS **ITT**

Marine and Recreation Components Division
International Telephone and Telegraph Corporation
1485 Dale Way, Costa Mesa, California 92626

Telephone: (714) 545-8251

For technical advice or service please take your pump into your local pump service center.
To order pump or parts or for pricing please go to the following links :

[Jabsco Pumps Home >>](#)

[Jabsco Pumps stock list >>](#)