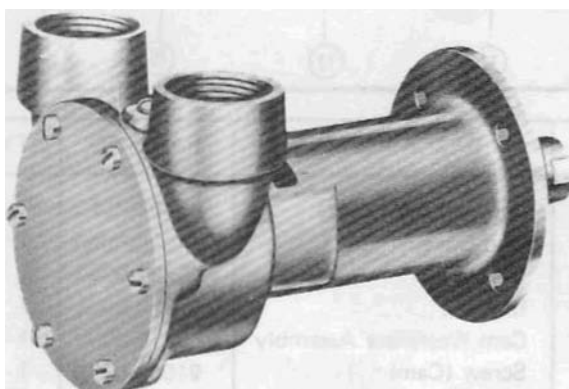




Model 3380-0001



Self-Priming Pumps FEATURES

Body:	Bronze
Impeller:	Jabsco Neoprene Compound
Shaft:	316 Stainless Steel
Shaft Seal:	Lip Type
Ports:	1/2" NPT
Weight:	Approx. Shipping Wght. 5½ lbs

Model 3380-0001

APPLICATION:

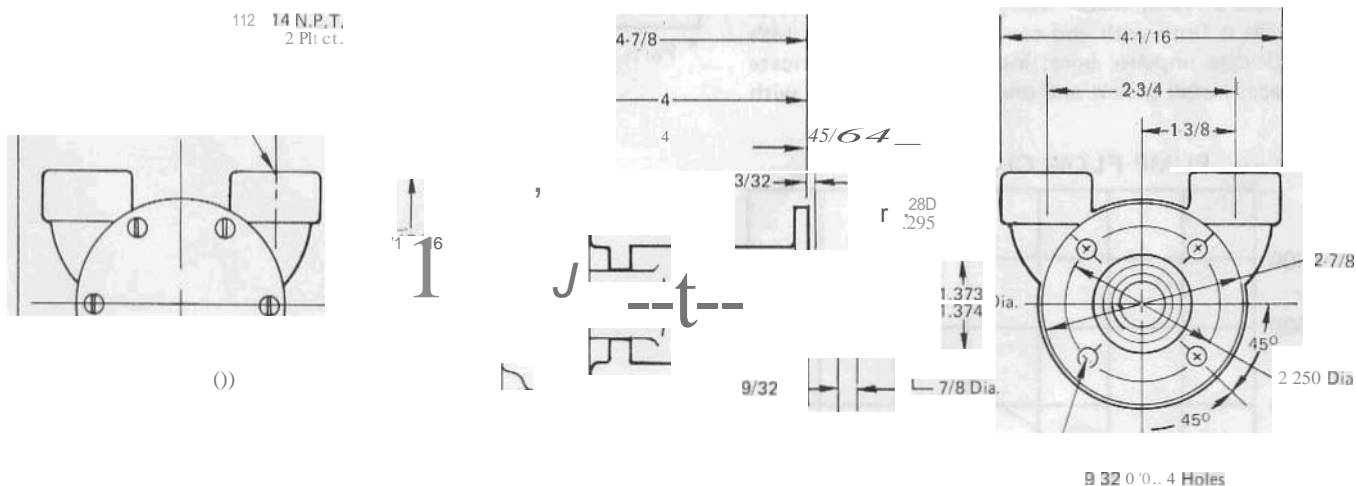
Marine Engine Cooling

FOR ENGINE MODELS:

CHRIS CRAFT · K Series (95 to 120 HP)
HERCULES · Ox
KERMATH · Sea Prince
OSEO · Hercules Diesel 470 (and others)
PALMER · PH75 · PH125
UNIVERSAL · Explorer 6 · Model OK
Master 6 · Model OL

MODEL: 3380-0001

DIAGONAL DRAWING

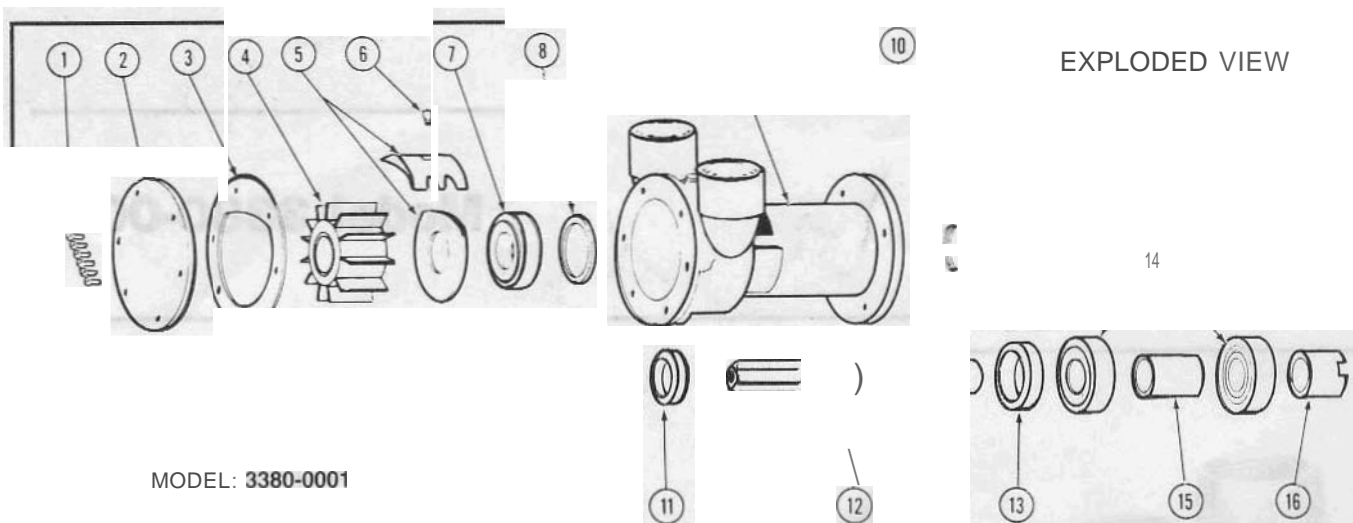


INSTALLATION INSTRUCTIONS

Engage shaft with drive tang, make sure flange seats square-ly on **mounting** surface and bolt to **engine**. Connect inlet and outlet fittings using pipe compound to seal threads.

OPERATING INSTRUCTIONS

Pump **will** self prime at low or high speeds. Make sure scoop and inlet line **are** clear and all connections air tight. Do not run pump dry for more than 30 **seconds**. Lack of water flow may damage impeller. To drain pump, loosen end **cover** screws.



SERVICE INSTRUCTIONS

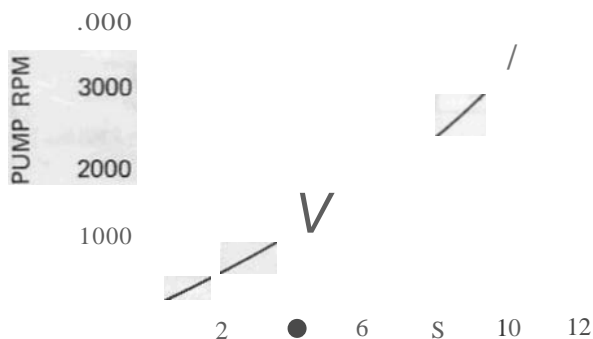
IMPELLER REPLACEMENT: Remove end cover and gasket. **Pull** impeller out by grasping hub with pliers. Replace impeller, gasket and end cover. A light coating of grease in impeller bore will aid priming on dry start up. (Use correct Jabsco **gasket**; a thicker or thinner gasket may cause impeller damage.) Standard gasket is 0.010" thick.

MAJOR REPAIR: Remove pump from engine to replace seal, bearings or shaft. To disassemble pump, remove end cover, gasket and impeller as outlined above. Press on impeller end of shaft to remove shaft and bearing assembly. Remove cam and wearplate assembly. Use screw driver to pry bearing **seal out** of bearing bore. Press shaft seal out towards impeller bore. Replace all worn parts. When installing coupling, support splined end of shaft. Press bearing seal in bearing bore with lip towards bearing. Press shaft and bearing **assembly** into bearing bore. Press adaptor ring **into** body. Install slinger on shaft. Install a-ring in seal bore. Press seal in seal cavity with lip facing toward impeller bore. Apply a small amount of sealant to top of cam and cam screw threads. Install wearplate and cam assembly. (Be sure cam is flush **with** end cover surface.) Secure with screw. Lubricate impeller bore; install impeller. Lubricate impeller face, install gasket and end cover and secure with screws.

KEY	DESCRIPTION	PART NO.	QTY.
1	Screws (End Cover)	91002-0020	6
2	End Cover	11830-0000	1
3	Gasket	5212-0000	1
4	Impeller	1210-0001	1
5	Cam Wearplate Assembly	5211-0000	1
6	Screw (Cam)	91003-0090	1
7	Seal (Shaft)	92700-0060	1
8	O-Ring	92000-0210	1
9	Body	3384-0000	1
10	Adaptor Ring	3376-0000	1
11	Slinger	32B6-0000	1
12	Shaft	5B57-0000	1
13	Bearing Seal	92700-0180	1
14	Ball Bearings	92600-0130	2
15	Bearing Spacer	3383-0000	1
16	Coupling	3278-0000	1
	Service Kit	90033-0001	

Parts Contained in Service Kit

PUMP FLOW CHART



FLOW IN U.S. GPM
Typical flow in average engine cooling application.

- Average engine cooling applications have discharge pressures 01 10 15 PSI and intake vacuums of 3 -5 inches 01 mercury.

THE PRODUCT DESCRIBED HEREIN IS SUBJECT TO THE JABSCO ONE YEAR LIMITED WARRANTY, WHICH IS AVAILABLE FOR YOUR INSPECTION UPON REQUEST.

ITT JABSCO

A Unit of ITT Corporation

1485 Dale Way, P.O. Box 2158, Costa Mesa, CA 92628-2158, Tel: (714) 545-8251
Bingley Road, Hoddesdon, Hertfordshire EN11 0BU England, Tel: +44-992-467191

For technical advice or service please take your pump into your local pump service center.
To order pump or parts or for pricing please go to the following links :

[Jabsco Pumps Home >>](#)

[Jabsco Pumps stock list >>](#)