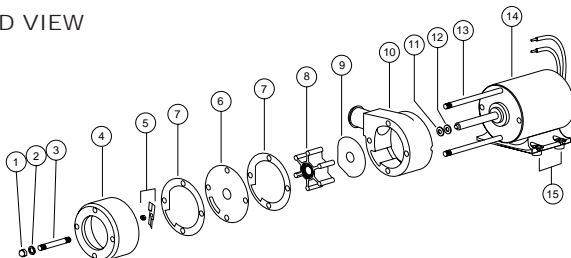




Model 18598-1000

MACERATOR SERVICE KIT

EXPLODED VIEW



Model: 18598-1000

MACERATOR SERVICE INSTRUCTIONS

Note the position and direction of the discharge port so the pump can be reassembled in the same configuration as it is originally.

DISASSEMBLY

Remove the four acorn nuts (Key 1) and fiber washers (Key 2) from the pump studs (Key 3). Slide the macerator housing (Key 4) off the studs. Insert a thin bladed 9/32" (7 mm) ignition wrench behind the chopper (Key 5) and onto the flat of the motor shaft to prevent it from turning. On macerators manufactured prior to June of 1998, position a screwdriver between the prongs of the cast bronze chopper and unscrew it (counter-clockwise) and remove it with its lock washer from the motor shaft. On macerators manufactured after June 1998 with stamped stainless steel chopper, use a 7/16" wrench to remove the chopper retaining locknut and the chopper. Remove the pump wearplate (Key 6) and two paper gaskets (Key 7). Now slide the pump body (Key 10) with impeller (Key 8), small wearplate (Key 9), two studs and shaft seal (not illustrated) as an assembly off the motor shaft and remove two mounting studs and discard.

ASSEMBLY

Install the two new studs in the two holes with threaded inserts in the new pump body and tighten finger tight. Slide the new pump body with the shaft seal installed onto the motor shaft and two long mounting studs in the motor. Slide the small wearplate over the motor shaft and position it in the bottom of the impeller bore. Slide the new impeller onto the motor shaft and, with a counter-clockwise motion, push it into the pump impeller bore. Position one new gasket on the studs and against the pump body assuring the cut-out aligns with the inlet groove in the body. Position the large wearplate (re-use old wearplate) and second gasket on the studs and against the body again aligning the hole in the wearplate and gasket cut-out with the pump inlet. On early model macerators, position the chopper on the end of the motor shaft and screw the chopper on the shaft threads. Hold the shaft with the ignition wrench and tighten the chopper firmly by inserting a screwdriver blade between the chopper prongs. On later model macerators, position the stamped S.S. chopper on the shaft with the positioning tab aligned with the flat on the motor shaft and pointing toward the motor. While holding the motor shaft with the ignition wrench, secure the chopper with the locknut. Position the macerator housing on the four studs ensuring the cut-out in the inner wall aligns with the pump body inlet port and hole in the wearplate. Position a new fiber washer on each of the studs and secure the macerator housing in place with the four acorn nuts.

Jabsco



ITT Industries
Engineered for life

THE PRODUCT DESCRIBED HEREIN IS SUBJECT TO THE JABSCO ONE YEAR LIMITED WARRANTY, WHICH IS AVAILABLE FOR YOUR INSPECTION UPON REQUEST.

U.S.A.
Jabsco

UNITED KINGDOM
Jabsco

CANADA
Fluid Products Canada

JAPAN
NHK Jabsco Company Ltd.

GERMANY
Jabsco GmbH

For technical advice or service please take your pump into your local pump service center.
To order pump or parts or for pricing please go to the following links :

[Jabsco Pumps Home >>](#)

[Jabsco Pumps stock list >>](#)