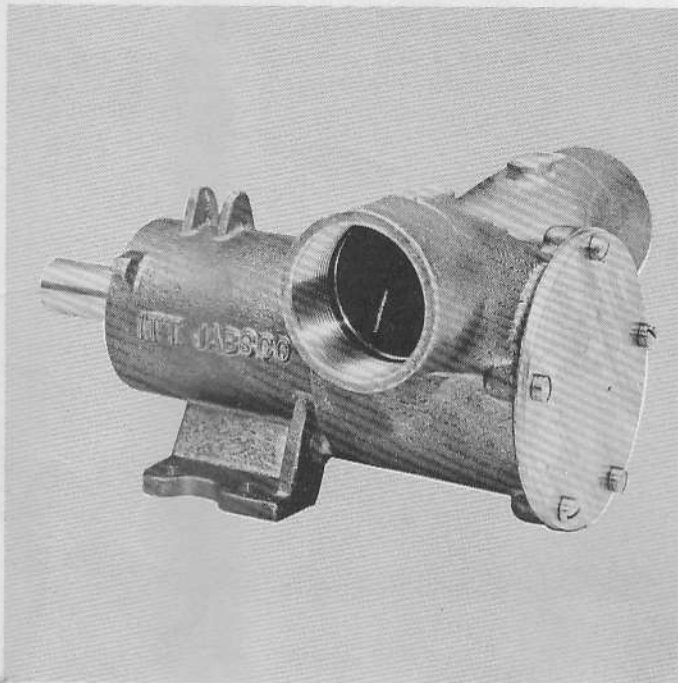


# JABSCO® PUMPS

Self-Priming Pumps

## MODEL 18340-0000 (1½") 18370-0000 (2")

PRODUCT DATA



### DESIGN FEATURES

<b>Body:</b>	Bronze
<b>Impeller:</b>	Jabsco Neoprene Compound
<b>Shaft:</b>	Brass
<b>Ports:</b>	Model 18340 1½" IPT Model 18370 2" IPT
<b>Seal:</b>	Carbon-Ceramic Face Type
<b>Bearings:</b>	Sealed Ball Bearings
<b>Shipping Weight:</b>	18340 - 18 Lbs. (8.2 Kg) 18370 - 19 Lbs. (8.6 Kg)

MODEL 18340-0000 (1½")  
18370-0000 (2")

### APPLICATIONS

**MARINE:** Engine cooling, Pumping bilges, Washdowns, Circulating water in bait tanks, Utility dock side pump.

**INDUSTRIAL:** Circulating and transferring, Velocity-mixing, Return spill, Sump drainage, Chemicals, Pharmaceuticals, Soap, Liquors, Ink, Dyes, Alcohol, Tanning Liquors, Glycerine, Brine, etc.

**FARMING:** Pumping water for stock, Pumping water from shallow wells and cisterns.

### OPERATION

Pump will self-prime at low or high speeds. Make sure that all connections are airtight. **DO NOT RUN PUMP DRY FOR MORE THAN 30 SECONDS. LACK OF WATER FLOW MAY DAMAGE IMPELLER.** To drain pump, loosen end cover screws. See Head Capacity Table for head pressures and flow. To avoid costly shutdowns, keep a Jabsco Service Kit on hand.

### INSTALLATION

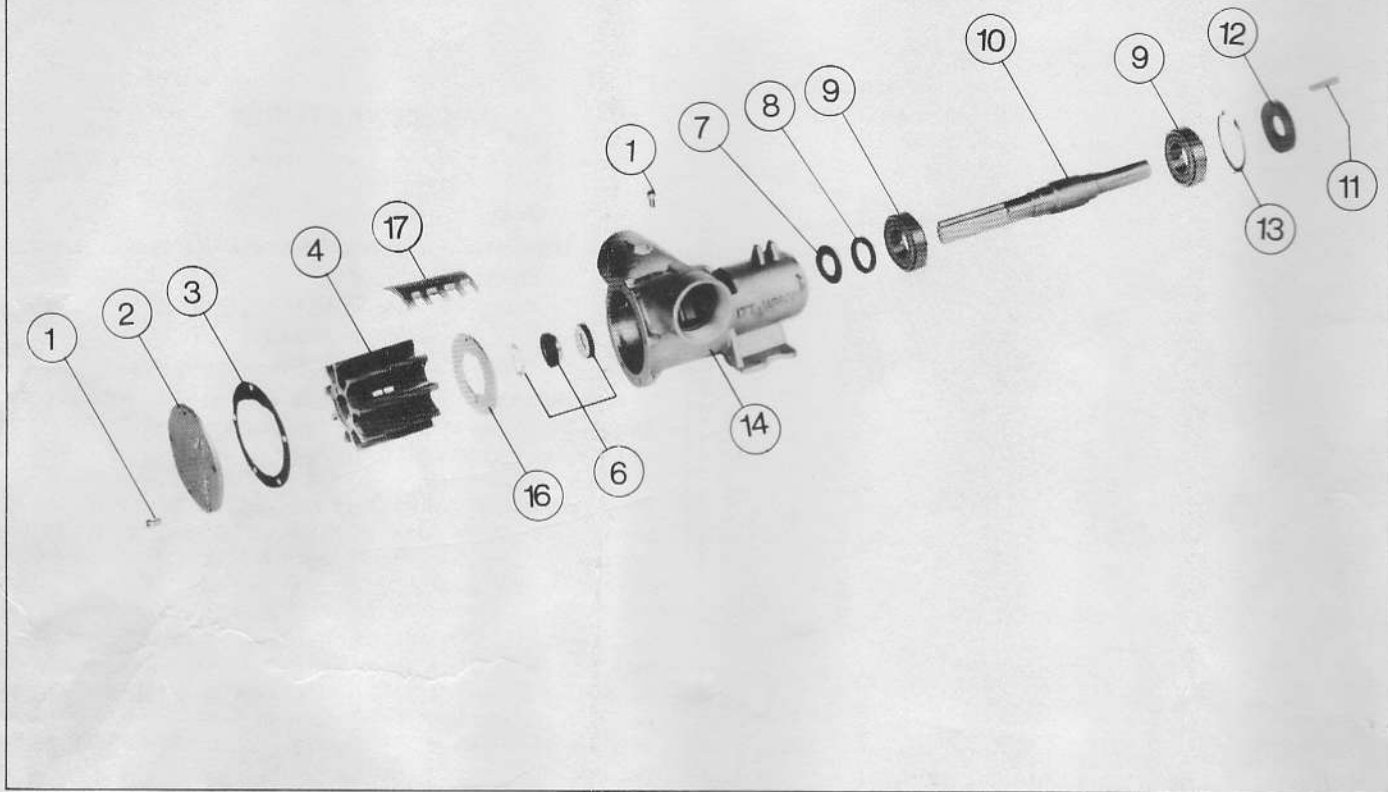
Pump may be mounted in any position. Intake and discharge ports are determined by the direction of shaft rotation (refer to dimensional drawing). Before installing, turn pump shaft in the direction of shaft rotation.

**NOTE:** MODEL 18370-0000 IS INTERCHANGEABLE WITH EARLIER PUMP MODEL 10490-0001: BASE MOUNTING DIMENSIONS, HEIGHT ABOVE BASE TO SHAFT, AND HEIGHT ABOVE BASE TO PORT CENTERLINE ARE THE SAME.

JABSCO PRODUCTS **ITT**

Form 43000-0155 Rev. 3-78

EXPLODED VIEW



PARTS LIST

Key	Description	Part Number	Qty.
1	Screw, End Cover and Cam	91005-0040	6
2	End Cover	12062-0000	1
3	*Gasket	816-0000	1
4	*Impeller	6760-0001	1
6	*Seal Assembly (Shaft)	6408-0000	1
7	Slinger	3181-0000	1
8	Inner Bearing Seal	92701-0180	1
9	Ball Bearing Seal	92600-0260	2

Key	Description	Part Number	Qty.
10	Shaft	10487-0010	1
11	Drive Key	91402-0120	1
12	Outer Bearing Seal	92700-0490	1
13	Retaining Ring	91701-2440	1
14	Body		1
	Model 18340-0000 (1½" IPT)	18313-0004	
	Model 18370-0000 (2" IPT)	18313-0001	
16	Wearplate	2574-0000	1
17	Cam	6988-0000	1
	Service Kit	90254-0001	

\*Parts contained in Service Kit

**NOTE:** 1. ALL REPLACEMENT PARTS SHOWN ARE INTERCHANGEABLE WITH EARLIER PUMP MODEL 10490-0001.  
 2. MODELS 18340-0000 and 18370-0000 HAVE A ONE-PIECE BODY AND BEARING HOUSING DESIGN, WHICH REPLACES THE TWO-PIECE DESIGN OF MODEL 10490-0001.

---

For technical advice or service please take your pump into your local pump service center.  
To order pump or parts or for pricing please go to the following links :

[Jabsco Pumps Home >>](#)

[Jabsco Pumps stock list >>](#)