

Cast Iron

Model 1200C 4-Roller

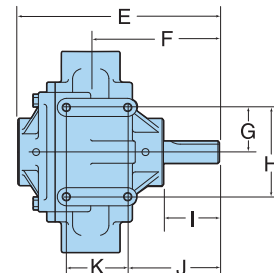
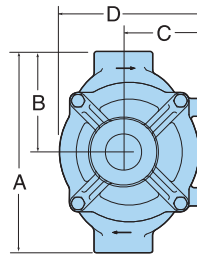


Features

- Max. flow: 48.8 gpm/184.7 lpm at 540 rpm;
74 gpm/280.1 lpm at 800 rpm
- Max. pressure: continuous 100 psi/6.9 bar;
intermittent 150 psi/10.3 bar
- Max. rated speed: 800 rpm
- Max. fluid temperature: 140°F/60°C
- Shaft size: 1" solid
- Port size: 1½" NPT
- Housing: Cast Iron
- Pump shaft rotation: CCW (CW available)*
- Weight: 32 lbs./14.5 kg
- Rollers: Super Rollers standard (Poly available)
- Shaft Seals: Buna-N standard (Viton available)
- Available PTO adapters: See page 67
- Recommended PTO mounting clip:
Model No. 1520-0034
- Rotor: Cast Iron

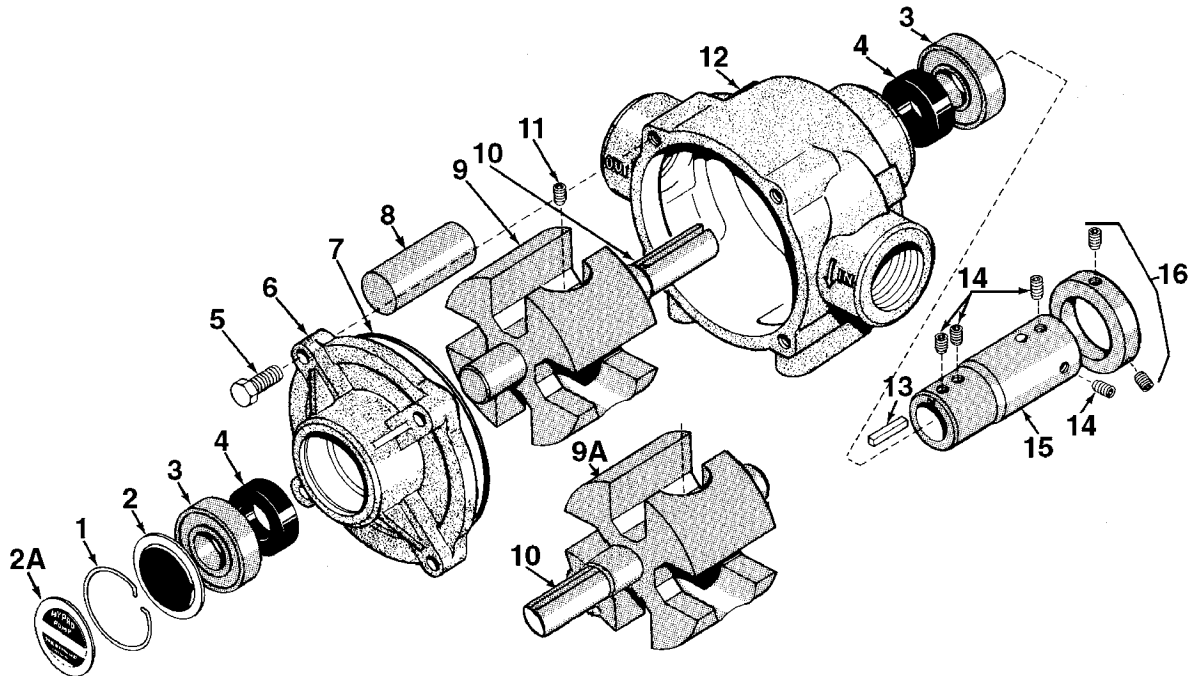
Dimensions		
	Standard	Metric
A.	9"	229 mm
B.	4 ½"	114 mm
C.	3 ⅝"	92 mm
D.	6 ½"	165 mm
E.	9 ⅙"	230 mm
F.	5 ⅓"	148 mm
G.	2"	51 mm
H.	4"	102 mm
I.	2 ⅙"	65 mm
J.	4 ⅝"	106 mm
K.	2 ¾"	70 mm

Pressure in PSI and BAR	GPM		GPM		GPM	
	LPM	HP	LPM	HP	LPM	HP
	@540 RPM		@600 RPM		@800 RPM	
30 PSI	—	—	—	—	74.0	4.0
2.1 BAR	—	—	—	—	280.1	4.0
50 PSI	48.8	2.70	54.3	3.12	72.5	5.08
3.4 BAR	184.7	2.70	205.5	3.12	274.4	5.08
100 PSI	44.2	4.47	50.5	5.05	69.5	7.31
6.9 BAR	167.3	4.47	191.1	5.05	263.1	7.31
150 PSI	41.0	6.17	47.0	6.94	67.0	9.60
10.3 BAR	155.2	6.17	177.9	6.94	253.6	9.60



* CCW (counterclockwise) and CW (clockwise) are determined when looking at the shaft end.

Model 1200



Ref. No.	Qty. Req'd.	Part Number	Description
1	1	1800-0013	Retainer Ring
2	1	2840-0049	Bearing Cover
2A	1	6031-0258	Name Plate (Specify Pump Model #)
3	2	2001-0006	Ball Bearing
4	2	2112-0008	Buna-N Seal (Standard)
4	2	2112-0009	Viton Seal (Optional)
5	4	2210-0019	Hex Head Bolt
6	1	0200-1200C	Endplate (Cast-Iron) with seal
7	1	1720-0127	O-ring Gasket for Endplate
8	4	1005-0006	Super Roller (Standard)
9	1	0300-1200C	Rotor (Cast Iron) with shaft (Std. Rotation)
9A	1	0301-1200C	Rotor (Cast Iron) w/shaft (Reverse Rotation)

Ref. No.	Qty. Req'd.	Part Number	Description
10	1	0500-1200	Shaft
11	1	2230-0018	Set Screw
12	1	0100-1200C	Body (Cast Iron) with seal
13	1	1610-0005	Key
14	1 kit	3410-0031	Set Screw Kit
15	1	1320-0081	1-3/8" 6-spline 540 rpm PTO Adapter (Forged Steel) Includes Kit No. 3410-0031
16	1 kit	3430-0207	Locking Collar Kit — Includes: (1) Collar and (2) Setscrews

ORDER PARTS FROM YOUR SUPPLIER

Parts Kit No. 3430-0374 Consists of (4) Ref. 8 Super Rollers, (1) Ref 70-Ring, (2) Ref 4 Buna-N Seals

Locking Collar Kit No. 3430-0207
For Series 1200 Roller Pumps

This locking collar kit holds the pump driver shaft securely on the tractor PTO shaft. It is designed to increase pump life by reducing pump and PTO shaft wear due to vibration. To install locking collar:

1. Slide collar onto pump driver shaft.
2. Thread the longer set screw through the locking collar and partially through the threaded hole in the pump driver shaft. **IMPORTANT:** It is necessary to allow a minimum of 1/8" clearance between the locking collar and the pump driver shaft at set screw.

3. Thread the shorter set screw into the other threaded hole in the locking collar.
4. Slide pump driver hub over PTO shaft. Be sure PTO groove is under set screw.
5. Tighten the longer screw very securely with a 3/16" allen wrench.
6. Tighten the shorter set screw very securely with the same wrench. This binds set screw which prevents it from coming loose.
7. **NOTE:** Locking collar is off-center on the pump driver shaft when properly installed.